

Lift and Dispense a Drum with Your Hoist or Crane

Kontrol-Karrier Model 185R

- **Attaches to your hoist or crane for quick, sure below-hook drum handling**
- **Provides controlled high-level pouring above your reach**
- **Allows 360° drum tilt control in both directions**
- **Saves time, reduces waste, and improves productivity**



- **Adaptable to a range of drum sizes and types**
- **Top Rim Clamp grips upper rim of drum**
 - Spring loaded foot engages bottom rim of steel drum
 - Lift upright or horizontal drum
 - Place rimmed 55-gallon (208 liter) steel drum down upright or in horizontal position
- **Has chain wheel controlled tilt with 30:1 gear ratio and safety cover**

Handle a drum

- **Up to 23.5" (59.7 cm) diameter**
- **With minimum height of 34" (86.4 cm)**
- **With drum faucet in place**
- **800 Lb. (364 kg) full-drum capacity** (500 Lb. (227 kg) half-full* drum capacity).

Domestic ship dimensions:

L 48" W 40" H 29" (122 x 102 x 74 cm)

Ships class 77.5

Domestic ship weight: 203 Lb. (92 kg)

Morse Kontrol-Karriers model 185R handles almost any rimmed drum up to 23.5" in diameter and with minimum height of 34". The top rim clamp and bottom rim foot secure a steel drum. Lift your 55-gallon (210 liter) steel drum from vertical or horizontal, and place it upright or on its side.

To lift and pour your plastic or fiber rimmed drum, place the chain around front of drum when tilting. It has a 12' (3.66 m) long pull chain loop with 6' (1.8 m) drop so you control drum tilting, 360° in either direction. Dispense a drum overhead with your crane or hoist.

We recommend the MORStop Tilt-Brake option to automatically hold the drum tilt angle until you move it. This prevents a partially full, unbalanced drum from turning out of control, even when the contents shift from one end to the other.

Steps for Use of Model 185R Kontrol-Karrier

1. Attach the Kontrol-Karrier to your hoist hook, then move to your upright drum.

2. Mate the Kontrol-Karrier's drum holder to your drum.

3. Tighten the Top Rim Clamp to securely grip the upper rim of your drum.

4. Raise drum slightly. Extend the Bottom Rim Foot and position under drum. The Bottom Rim Foot is spring loaded to engage the bottom rim of the drum. Use the Bottom Rim Foot when tilting or pouring a drum that has a bottom rim.

If your drum has an appropriate bottom rim, it can eliminate the need to clamp anything around the front of a drum. However, if your drum lacks a bottom rim, you must secure the chain around front of your drum when tilting or pouring.

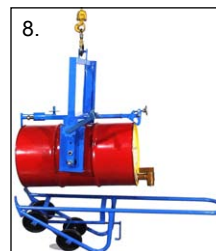


5. Lift the Kontrol-Karrier and secured drum, with your hoist or crane.

6. To control turning of your drum, pull down on one side of the pull chain loop while letting out the other.

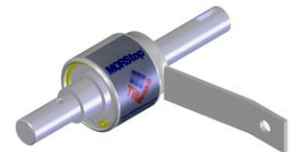
7. To remove an upright drum from your Kontrol-Karrier: Lower to slightly above the floor, then disengage the bottom rim foot. Lower the drum to rest on the floor. Disengage the Top Rim Clamp and the chain from around your drum.

8. To remove a horizontal drum from your Kontrol-Karrier: Disengage the chain from around the drum first. Lay your drum to rest in horizontal position, then disengage the Bottom Rim Foot and the Top Rim Clamp.



* Half-full rating is an indication of capacity for tilting an unbalanced, bottom-heavy drum. A partially full drum with unbalanced and shifting load is harder to tilt than a full drum.

Tilt Control Options



Option # 3900i-P MORStop Tilt-Brake factory installed on your Forklift-Karrier is recommended to automatically hold the drum tilt angle.

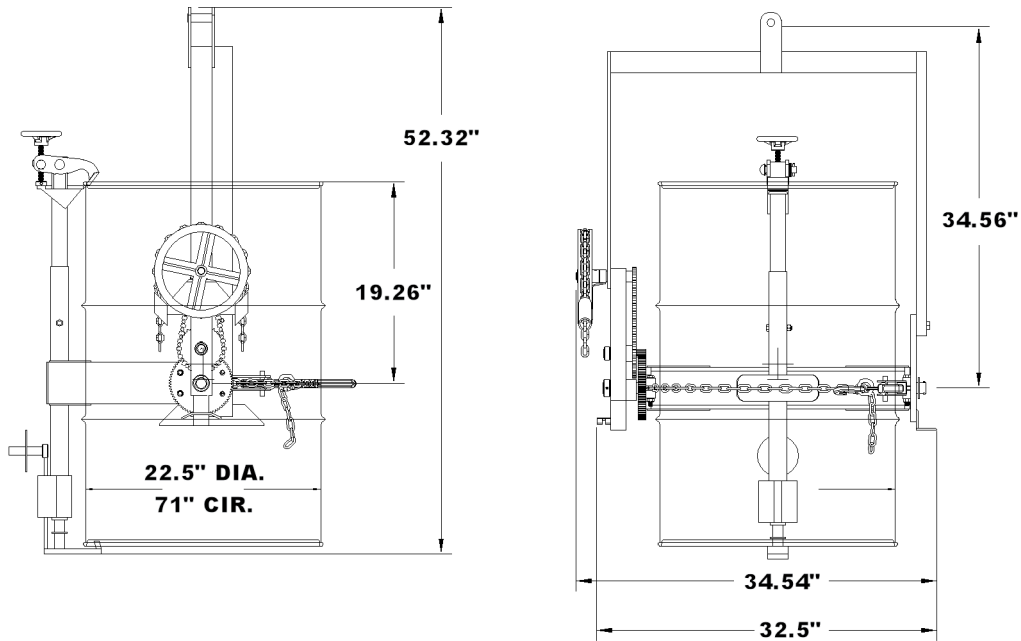
Part # 3900-P MORStop Tilt-Brake Kit for field installation.

Option X02-185 Simple Hand Crank.

Option X03-185 16" (40.6 cm) Hand Wheel (not shown)



Dimensions



MADE
IN
USA

NOTE: Standard loop of pull chain extends approximately 6' (1.8 m) below the chain wheel. Custom lengths are available.

Please contact your Morse dealer