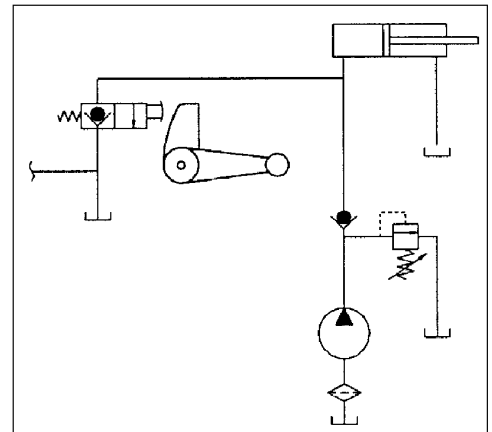


Hydraulic Schematic



| ITEM | QTY. | PART NUMBER | DESCRIPTION |
|------|------|---------------|--------------------------------|
| 1 | 1 | M18002-P | COUPLING ASM, 5/8 TO 7/16, MON |
| 2 | 1 | M01615-P | HOUSING, PUMP/ MOTOR ADAPTER |
| 3 | 1 | M04618-P | RESERVOIR, POLY, 4.5 X 12 |
| 4 | 1 | M03171-P | PLUG, BREATHER, FILLER, 3/8" |
| 5 | 1 | M12172-200-P | PUMP ASM, M4509, M4507 |
| 6 | 1 | M01490-P | CONNECTOR ASM, BRASS 1/2TX3/8 |
| 7 | 1 | M13021-1050-P | TUBE, RETURN, 45DEG, 1/8 NPTF |
| 8 | 1 | M04297-08-P | TUBE, SUCTION, 45DEG 1/2 ALUM |
| 9 | 1 | M01315-P | FILTER, SUCTION, MON |
| 10 | 1 | M12481-P | BASE ASM, M4509, MON |
| 11 | 1 | M10802-P | VALVE, MANUAL, 2W/2P, NC |

| | | | |
|--------------------------|---|----------|-----------------------------|
| 12* | 1 | M10803-P | HANDLE ASM, MANUAL RELEASE |
| 13 | 4 | M07818-P | SHCS, 1/4-20 X 3 |
| 14 | 1 | M07900-P | CLAMP, HOSE, WORM GEAR, RSV |
| *Recommended spare parts | | | |