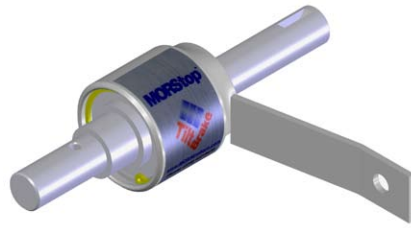


Automatically Holds Drum Tilt Position. . . So You Don't Have To

- Anti-backdrive device automatically prevents drum from turning out of control, even when drum contents shift from one end to the other
- Adds Automatic Self-Stop and Hold to drum tilting
- Provides even greater ease of use and improved control
- Factory Installed Option 3900i-P on many Morse models with manual tilt
- Kit 3900-P for customer to install on many Morse manual tilt models



What is the MORStop™ Tilt-Brake?

It is a simple, compact anti-backdrive device that functions smoothly and quietly in both directions. The unique MORStop Tilt-Brake mechanism automatically stops and holds the drum tilt angle! Without the Tilt-Brake, operators may need to manually lock the pull-chain or crank handle to prevent unwanted drum rotation, especially when dispensing a heavy drum, unbalanced drum.

Option # 3900i-P Factory Installed MORStop™ Tilt-Brake on many Morse models with manual drum tilt control.

Kit # 3900-P for Customer to Install MORStop™ Tilt-Brake on existing unit with hand crank, chain-wheel or hand wheel.

Advantages and Benefits:

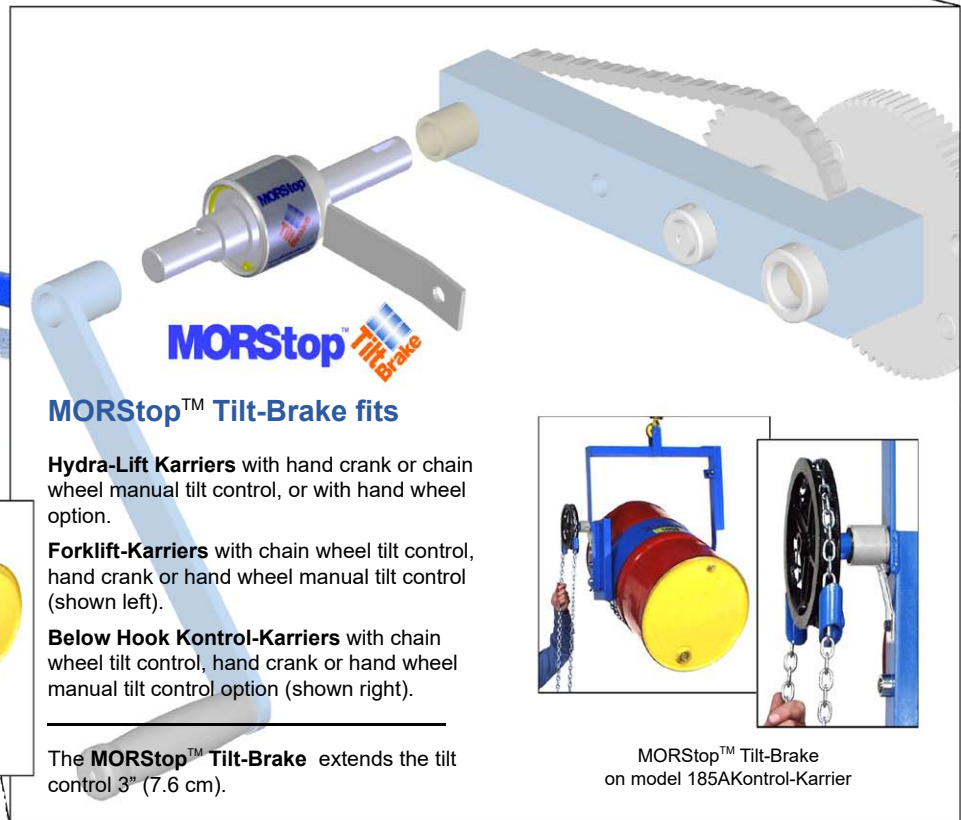
- Gives the operator unprecedented control and ease of use by holding the drum tilt position constant even when removing tension from the pull-chain or crank handle.
- Eliminates backdrive from heavily loaded, unbalanced drum and prevents drum from tilting due to its own weight-shift
- Braking is immediate and self-actuating, without additional steps by the user
- Braking action works in either forward or reverse tilt-direction



MADE
IN
USA



MORStop™ Tilt-Brake on model 400A-60 Hydra-Lift Karrier



MORStop™ Tilt-Brake fits

Hydra-Lift Karriers with hand crank or chain wheel manual tilt control, or with hand wheel option.

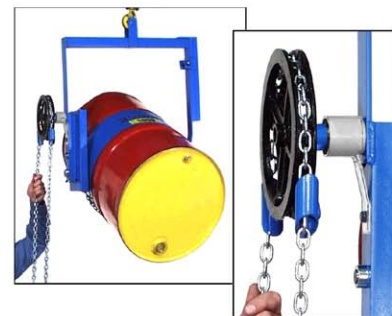
Forklift-Karriers with chain wheel tilt control, hand crank or hand wheel manual tilt control (shown left).

Below Hook Control-Karriers with chain wheel tilt control, hand crank or hand wheel manual tilt control option (shown right).

The MORStop™ Tilt-Brake extends the tilt control 3" (7.6 cm).



MORStop™ Tilt-Brake on model 285A Forklift-Karrier



MORStop™ Tilt-Brake on model 185A Control-Karrier

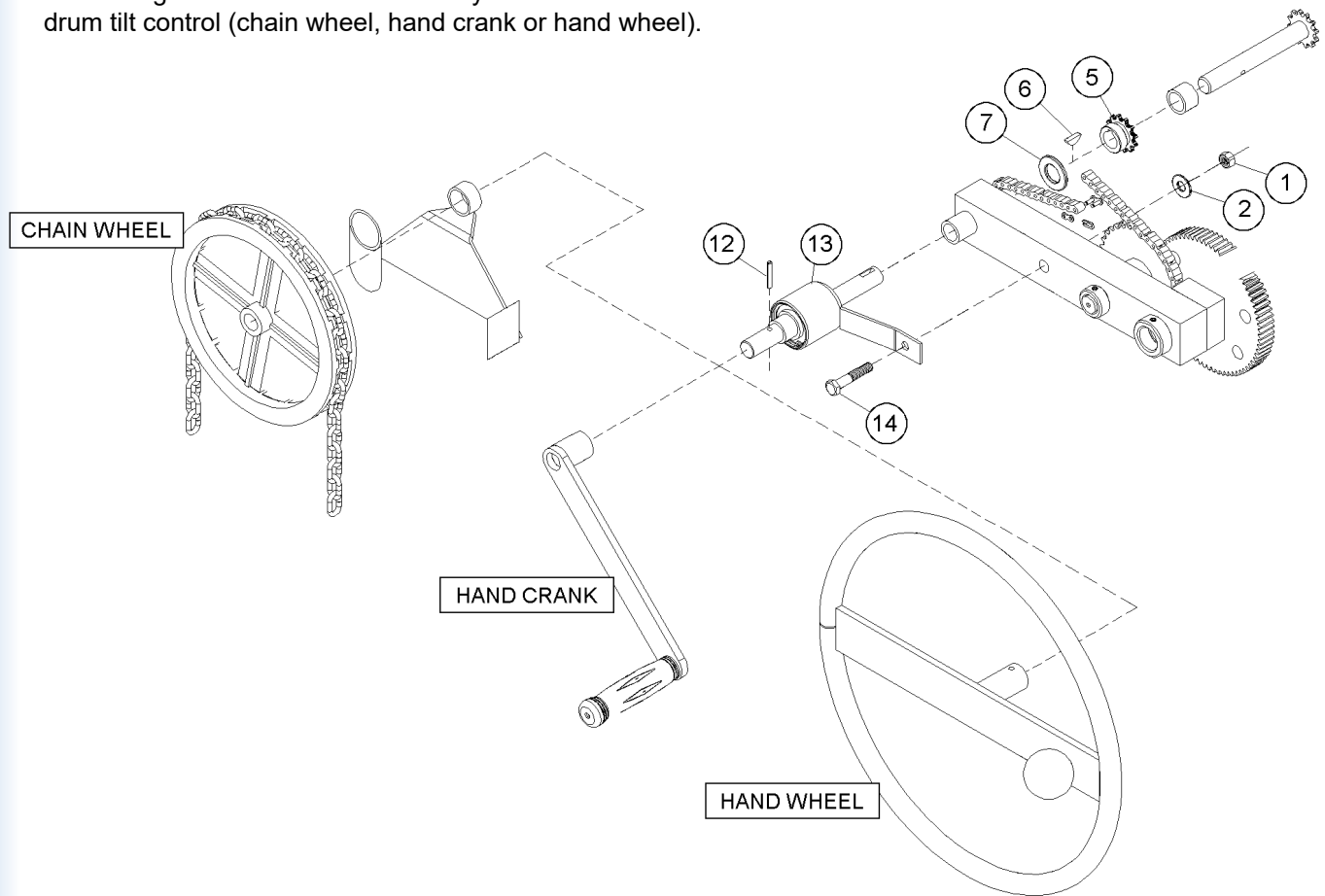
Option # 3900i-P

Factory Installed MORStop™ Tilt-Brake installed on new unit.

Kit 3900-P

Kit for customer to install MORStop™ Tilt-Brake

on existing Morse unit. Install on many Morse models with manual drum tilt control (chain wheel, hand crank or hand wheel).



MADE
IN
USA

MORStop™ Tilt-Brake Kit # 3900-P			
Item #	Qty.	Part #	Description
1	1	1169-P	NUT, 3/8-16 REV HEX LOCK
2	1	1166-P	WASHER, 3/8 USS 1" OD
5	1	11-P	SPROCKET, #35 12T, 3/4" BORE
6	1	735-P	KEY, WOODRUFF, SIZE 9, ASA606
7	1	55-P	WASHER, 3/4 SAE FL 1-1/2 OD
12	1	64-P	ROLL PIN, 3/16 X 1-1/4
13	1	3901-P	MORStop TILT-BRAKE
14	1	82-P	HHCS, 3/8-16 X 2-1/4 GR2