

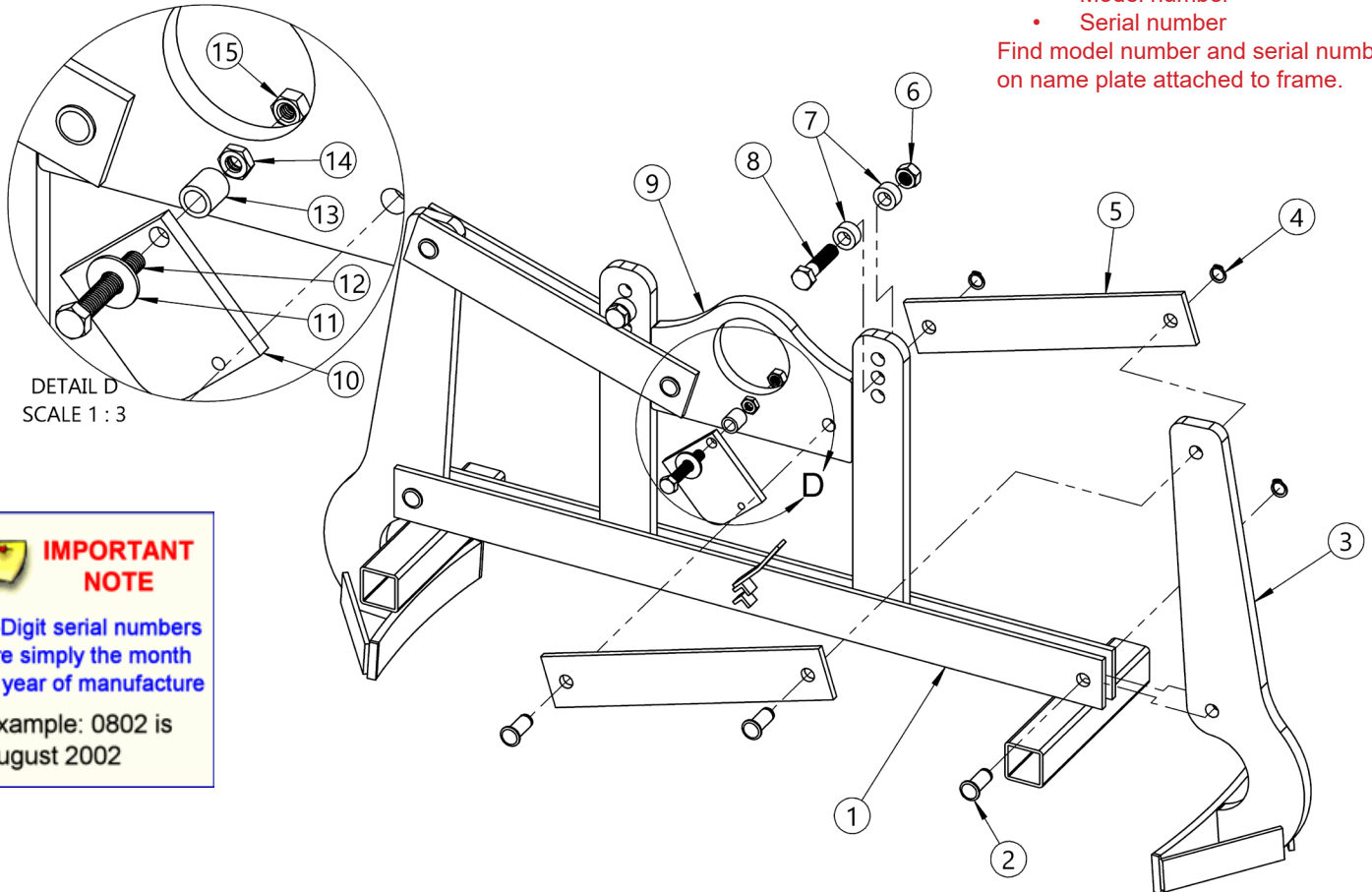
**Parts Diagram for Morse Model 90-85 Verti-Karrier  
for 85-gallon (322 liter) drum  
Serial Number 0814 to \_\_\_\_ (MMYY)**

For replacement parts, please contact your Morse dealer.

When ordering parts, please specify:

- Part number and description
- Model number
- Serial number

Find model number and serial number on name plate attached to frame.



**IMPORTANT NOTE**  
4-Digit serial numbers are simply the month & year of manufacture  
Example: 0802 is August 2002

ITEM NO.	PART NUMBER	DESCRIPTION	QTY.
1	1407-P	BASE WELD, 90-85	1
2	5344-P	PIN, GROOVE, 1/2 X 1.0625 C	6
3	1403-P	ARM WELD, 90-85	2
4	5345-P	SNAP RING, EXT, HD, .05, 1/2"	6
5	985-P	LINK, 90, 6/88	4
6	91-P	NUT, 1/2-13 FIN HEX	2
7	151-P	STOP SPACER, 90	4
8	1168-P	1/2 - 13 X 2 HHCS GR 2	2
9	980-P	LIFTING PLATE, W/ HOLES, 90, LC	1
10	145-P	LATCH WEIGHT WELD, 90	1
11	1166-P	WASHER, 3/8 USS 1" OD, ZINC	1
12	6242-P	HHCS, 3/8-16 X 2-1/4 FULL THRD	1
13	1968-P	TUBING, 5/8 OD X .688, 90, 155	1
14	1165-P	NUT, 3/8-16 JAM	1
15	1169-P	NUT, 3/8-16 REV HEX LOCK	1