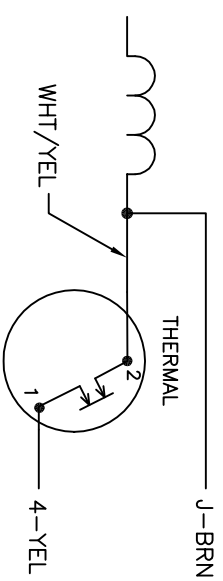


	LINE A	LINE B	JOIN	JOIN
HIGH STD	1	4	2,3,8	J,5
HIGH OPP	1	4	2,3,5	J,8
LOW STD	1,3,8	4	-	2,J,5
LOW OPP	1,3,5	4	-	2,J,8

NOTES:

1. STANDARD ROTATION IS CCW FACING END OPPOSITE SHAFT EXTENSION.
2. MULTIPLE CAPACITORS ARE CONNECTED IN PARALLEL UNLESS OTHERWISE SPECIFIED.
3. LEAD COLORS ARE OPTIONAL. LEADS MUST ALWAYS BE NUMBERED AS SHOWN.

INTERNAL CONNECTION FOR TWO TERMINAL THERMAL



BALDOR ELECTRIC CO.

TYPE L, DV, REV, THERMAL, 7 LEADS

REV. DESC: REVISE TO SHOW OPTIONAL COLORS	REV. LTR: E	BY: JLP	REVISED: 04/09/99 8:12	TDR: 0178636
80000QD	FILE: AAAA00007408	MTL: -	MDL: -	