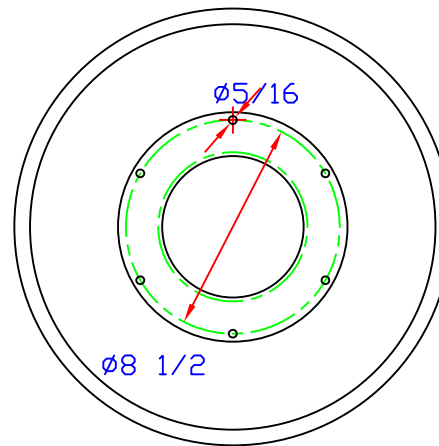
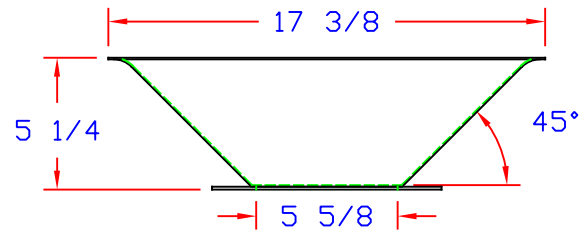


FOR REMOVABLE TOP
17" ID FIBRE DRUM



			UNLESS OTHERWISE SPECIFIED FRACTIONS $\pm 1/32$.XXX $\pm .005$ ANGLES $\pm 1'$.XX $\pm .02$ * = STOCK SIZE	MORSE 727 WEST MANLIUS ST. P.O. BOX 518 MANUFACTURING CO.,INC. EAST SYRACUSE, NY 13057
REVISION	EFFECTIVE DATE	INITIALS		
TITLE: CONE, FLANGE, 45, SIZE #17 PART #: 5-VF-45-17 PART FOR:		DRAWN BY: PM SCALE: 1:8	DATE: 3/17/05 PAGE: 1	THIS DOCUMENT, AND THE DESIGNS IT DESCRIBES, ARE PROPERTY OF MORSE MFG. CO. AND ARE NOT TO BE REPRODUCED OR USED IN ANY WAY DETRIMENTAL TO THE INTERESTS OF MORSE MFG. CO.