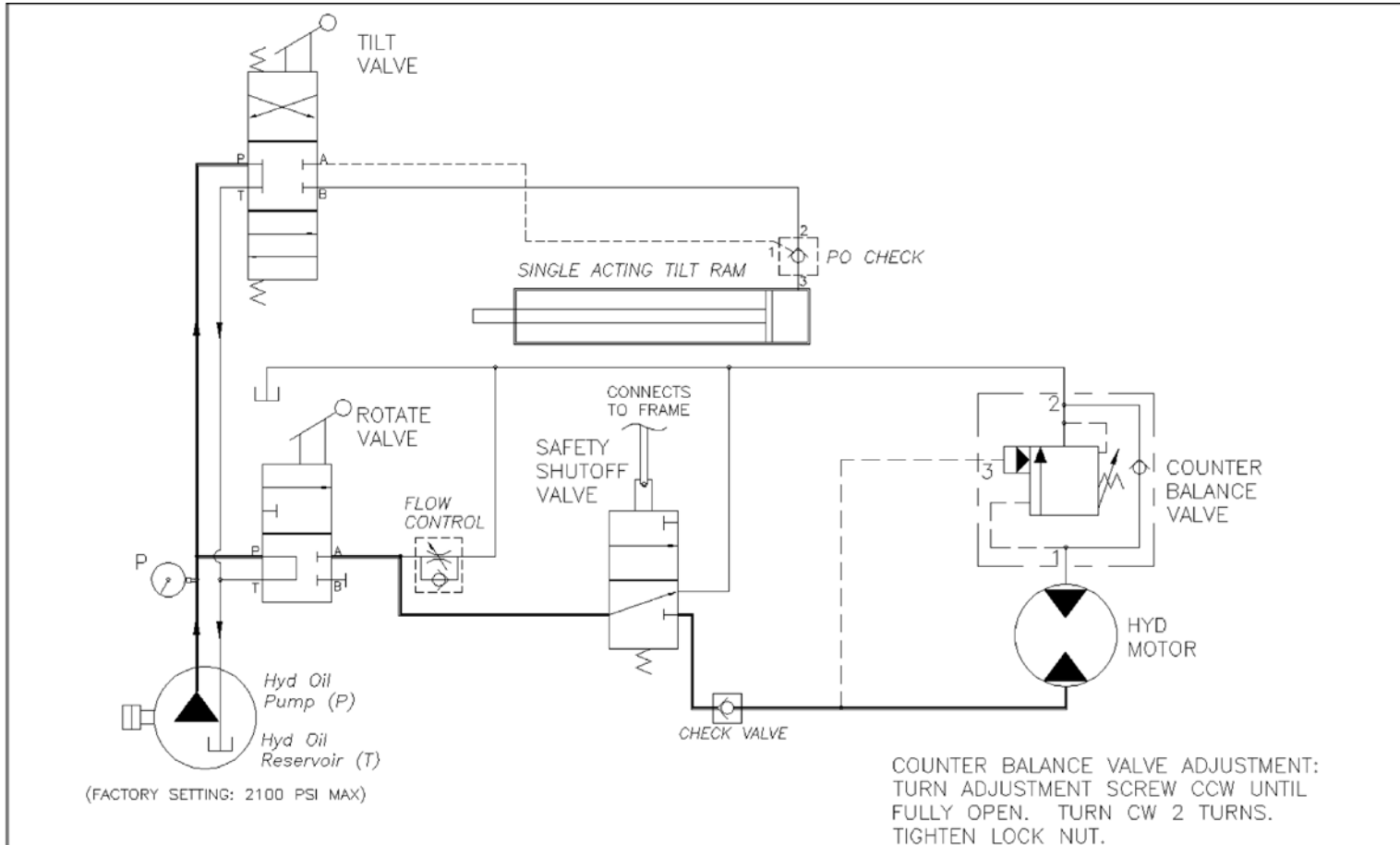



**Hydraulic Schematic for 310 Series Tilt-To-Load Drum Rotators  
with Serial Number 236553 to \_\_\_\_\_**



REMOVED FLOW CONTROL VALVE ON PO CHECK	06-25-08	RCM	UNLESS OTHERWISE SPECIFIED FRACTIONS ± 1/32 .XXX ± .005 ANGLES ± 1° .XX ± .02 * = STOCK SIZE	 727 WEST MANLIUS ST. P.O. BOX 518 MANUFACTURING CO., INC. EAST SYRACUSE, NY 13057
MOVED CHECK VALVE, CHANGED CYL TO RAM	04-30-08	RCM		
REVISION	EFFECTIVE DATE	INITIALS		
TITLE: HYDRAULIC SCHEM 310	DRAWN BY: RCM	DATE: 04-30-08	THIS DOCUMENT, AND THE DESIGNS IT DESCRIBES, ARE PROPERTY OF MORSE MFG. CO. AND ARE NOT TO BE REPRODUCED OR USED IN ANY WAY DETRIMENTAL TO THE INTERESTS OF MORSE MFG. CO.	
PART #:	PART FOR:	SCALE:		