

**OWNER'S MANUAL FOR
MORSE MODELS 186 & 184 ADJUSTO-KARRIERS**

A. IMPORTANT:

1. Review the Material Safety Data Sheet(s) for the material(s) in the drum(s) and take all necessary precautions. Safety shoes, work gloves, hard hat and other personal protective devices are recommended.
2. Please read all instructions *thoroughly* before attempting to operate your new MORSE drum handler.
3. These models have a maximum capacity rating of 500 Lb. full drum and 250 Lb. half-full drum. The 184 is designed to lift, move and pour 8" to 15" diameter steel and fibre drums. The 186 is designed to lift, move and pour 15" to 23" diameter steel and fibre drums. *DO NOT* exceed these ratings. Exceeding these ratings or handling drums other than those mentioned above is unsafe and could result in equipment damage, excessive wear or awkward handling.
4. When loading, unloading, operating, or maintaining your MORSE drum handler, always use care and good judgment. Maintain secure footing and a firm hold. Keep hands and loose clothing away from all moving parts. Never allow anyone to be below any part of a raised drum handler or drum. Read operating instructions and review the pictures in the sales brochure before operation.
5. Models 186 & 184 are "Group 1 - Structural and Mechanical" Below-the-Hook Lifting Devices which are covered by the American National Standard ANSI/ASME B30.20. The user should comply with all aspects of this standard.

B. ASSEMBLY INSTRUCTIONS:

1. Remove chain wheel (item 1), guide (item 2), pull chain (item 3) and roll pin (item 6) from carton.
2. Place guide over shaft (item 7). Align hole in chain wheel with hole in shaft. Hammer roll pin through aligned holes. If roll pin doesn't clear easily, rotate chain wheel 180° and try opposite side.
3. Place chain in chain wheel.
4. Prior to initial use, inspect all moving parts and test rotation of chain wheel and saddle assembly.
5. Perform necessary load test, inspections, operator training, etc. as prescribed in the ANSI/ASME B30.20 standard.

C. OPERATING INSTRUCTIONS:

1. With Adjusto-Karrier standing on the floor, lower hoist and engage hoist hook into the lifting eye.
2. Raise hoist to lift Adjusto-Karrier clear of floor and move it to the drum.
3. Back off each adjusting screw (item 33) using the removeable hand crank (item 34).
4. Position Adjusto-Karrier over drum.
5. Lower until Saddle Assembly (item 22) is aligned with the center of the load.
6. Turn each adjusting screw to tighten the binder strap (item 26) so drum is centered in the saddle assembly.
7. Raise hoist and position drum at the pouring station.
8. Pour drum by pulling on the pull chain (item 3) and rotating the drum to a suitable pouring angle.
9. After pouring is completed, rotate drum to vertical and lower hoist to return drum to floor.
10. Remove drum by backing out one adjusting screw and raising hoist to lift Adjusto-Karrier clear of drum.

CAUTION: DO NOT allow drum to impact on floor, ground, or dumping station, etc.

CAUTION: DO NOT exceed weight capacity of 500 lb. for FULL drum, 250 lb. for HALF-FULL drum.

D. MAINTENANCE:

1. Lubricate gear teeth and roller chain.
2. Periodically inspect all moving parts, framework, and contact areas for signs of wear, fatigue, or loosening. Perform all inspections, load tests, and maintenance according to the ANSI/ASME B30.20 standard.

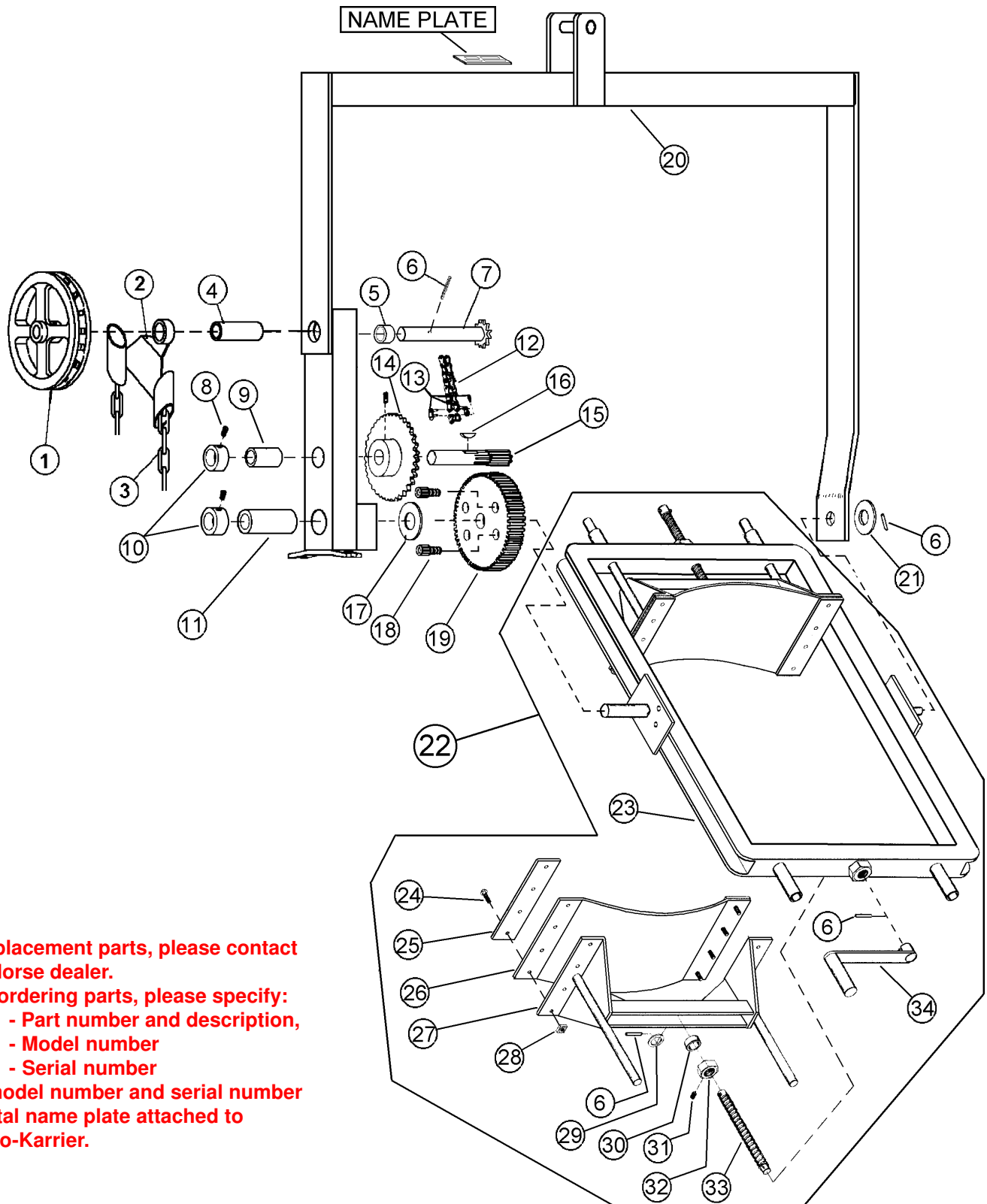
PARTS LIST

ITEM	MODEL **	QTY.	PART #	DESCRIPTION
1 *		1	1303-P	POCKET CHAIN WHEEL, 3/4 BORE
2		1	1304-P	GUIDE, POCKET CHAIN WHEEL
3 *		1	3-185-P	PULL CHAIN, POCKET, 12' LENGTH
4 *		1	19-P	BEARING, 3/4" ID X 2-1/2"
5		1	1411-P	SPACER, FOR SHAFT W/ 12T
6		4	64-P	ROLL PIN, 3/16 X 1-1/4
7 *		1	1302-P	SHAFT W/ 12T SPROCKET, POCKET
8		1	15-P	COLLAR, 3/4" ID
9 *		1	7-P	BEARING, 3/4" ID X 1-1/2"
10		1	16-P	COLLAR, 1" ID
11 *		1	18-P	BEARING, 1" ID X 2-1/2"
12 *		1	12-P	CHAIN, ROLLER, #35 W/ M LINK
13		1	795-P	LINK, MASTER, #35 CHAIN
14 *		1	13-P	SPROCKET #35 36T, 3/4" BORE
15 *		1	14-P	GEAR, PINION, 7 TOOTH
16 *		1	735-P	KEY, WOODRUFF, SIZE 9, ASA606
17		1	29-P	SPACER, SPUR GEAR .15"
18		2	22-P	3/8 - 24 X 5/8" SHCS STL
19 *		1	23-P	GEAR, SPUR, 72T, 1" HOLE
20	186	1	42-P	OVERHEAD LIFT YOKE 186 W/ BRG
20	184	1	42-184-P	OVERHEAD LIFT YOKE 184 W/ BRG
21		1	62-P	WASHER, 3/4 SPRING
22	186	1	1018-P	SADDLE ASM CPT, 186
22	184	1	1018-184-P	SADDLE ASM CPT, 184
23	186	1	184-P	FRAME, SADDLE, 186
23	184	1	1019-P	FRAME, SADDLE, 184
24		16	35-P	5/16 - 18 X 1 HHCS GR 2
25		4	179-P	CLAMP PLATE, 184, 186
26		2	181-P	BINDER STRAP, 186
26		2	181-184-P	BINDER STRAP, 184
27		2	182-P	BINDER FRAME, 186
27		2	182-184-P	BINDER FRAME, 184
28		16	491-P	5/16 - 18 REV HEX LOC NUT
29		2	173-P	WASHER, 1/2 SAE FL 1-1/16 OD
30		2	174-P	THRUST BEARING
31		2	1000-P	SET SCREW, 1/4 - 20 X 1/4
32		2	2314-P	5/8 ACME HEX NUT, W/ HOLE, 186
33		2	178-P	SCREW, 5/8 - 8 ACME, 186
34		1	183-P	HAND CRANK ASM, 186

* Recommended spare parts

** If a model number is shown, the part is for that model only. If no model number is shown, the part is for both Model 184 & 186.

PARTS DIAGRAM



For replacement parts, please contact your Morse dealer.

When ordering parts, please specify:
 - Part number and description,
 - Model number
 - Serial number

Find model number and serial number on metal name plate attached to Adjusto-Karrier.