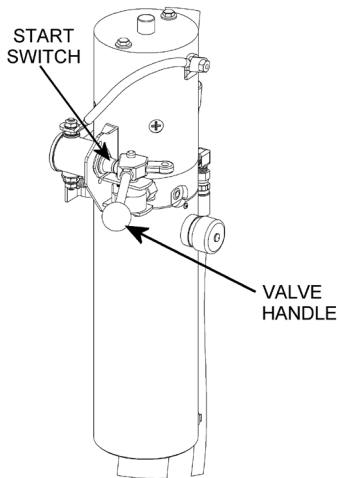


START-UP Procedure

Machine is shipped with hydraulic fluid.

1. Install provided VALVE HANDLE (hydraulic control lever) consisting of threaded rod and black ball.
2. **IMPORTANT:** BEFORE operation, remove the **RED** shipping plug from the hydraulic reservoir, and replace with the provided **BLACK** breather as shown.



Valve
Handle

Breather



Operating Instructions

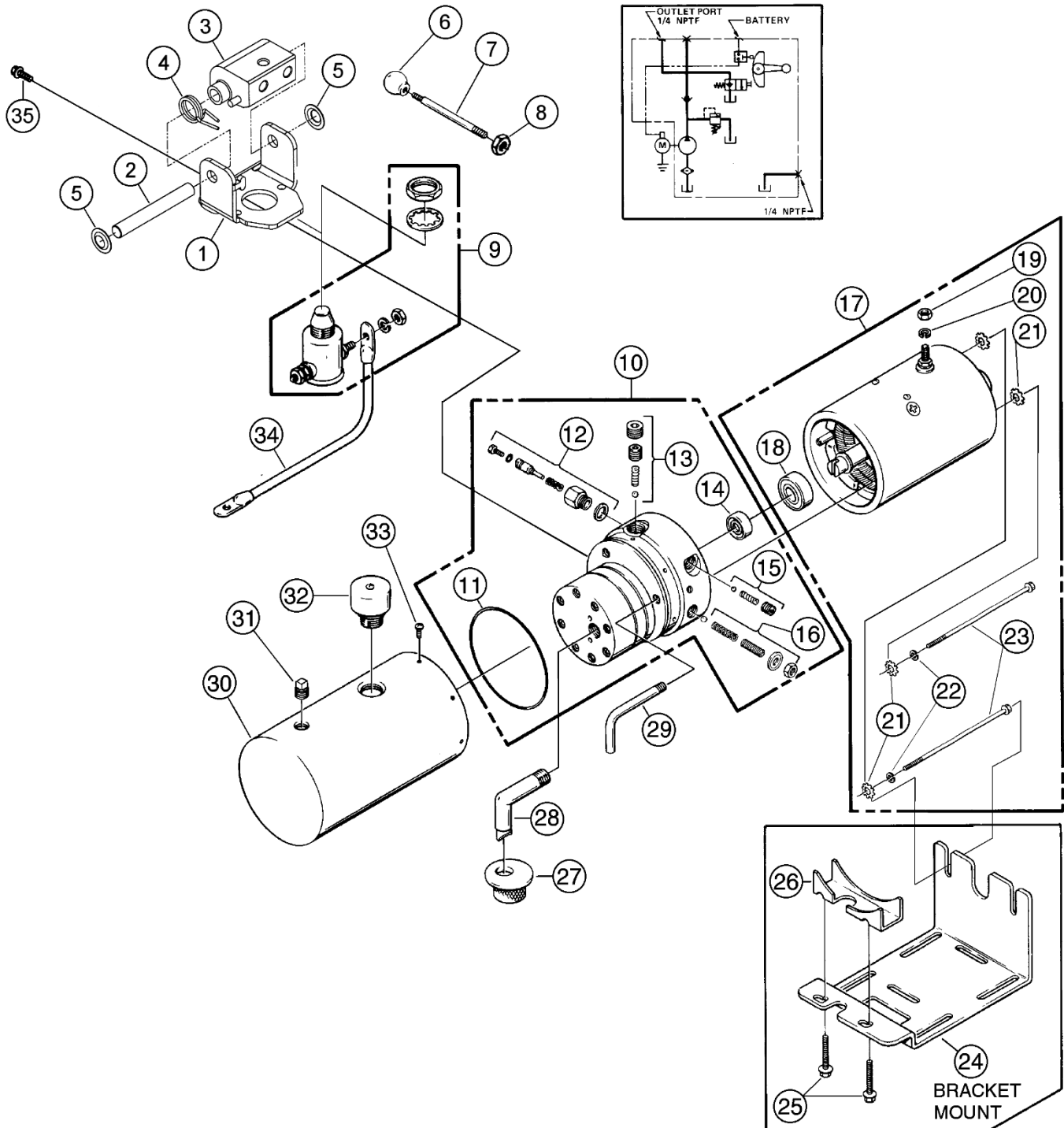
To Raise Drum

Push and hold Valve Handle in against Start Switch.
Release Valve Handle when drum is at desired height.

To Lower Drum

Pull and hold Valve Handle out away from Start Switch.

NOTE: The M301-P Power Pack might be replaced with an alternate part, due to stock shortages, lead times and availability. Alternate parts are commonly purchased from different vendors and have the same form, fit and function as original part, making them interchangeable.



ITEM	QTY.	PART NUMBER	DESCRIPTION
1	1	M04561-P	BRACKET, START SWITCH, PM CAN
2	1	M00650-P	SHAFT, CAM, M301, W/ RETAINER
3	1	M00652-P	CAM, LOW VALVE, START SWITCH
4*	1	M00018-P	SPRING, TORSION, MON
5	1	M03793-P	RING, SHAFT RETAINER, PUSH ON
6*	1	M01157-P	BALL, PLASTIC, HANDLE, MON
7*	1	M01326-P	ROD, VALVE HANDLE, MON
8	1	M07790-P	NUT, 5/16-18 HEX, MON
9	1	M03322-P	START SWITCH CANISTER, M301
10	1	M02627-P	PUMP ASM, GEAR CODE 43, M301
11	1	M02352-P	O-RING, 3-5/8 X 3-7/8 X 1/8
12	1	M00235-P	KIT, PLUNGER PARTS, M301
13	1	M00075-P	KIT, MAIN CHECK VALVE PARTS
14	1	M02159-P	SEAL, PUMP ASM, DC
15	1	M00078-P	KIT, CHECK VALVE PARTS, M301
16	1	M03766-P	KIT, RELIEF VALVE PARTS, DC
17	1	M08111-P	MOTOR, DC, 12V, 4.5", 1 TERM
18	1	M02318-P	BEARING, BASE, MOTOR, DC
19	1	M07625-P	NUT, 5/16-24 HEX, DC
20	1	M07781-P	WASHER, 5/16" LOCK, DC
21	4	M07737-P	WASHER, 1/4" STAR, DC
22	2	M07795-P	WASHER, 1/4" LOCK, DC
23	2	M07738-P	HHCS, 1/4-20 X 6-1/2 DC MON
24	1	M02238-P	BRACKET, MOUNTING, DC MON
25	2	M07717-P	SCREW, 1/4-20 X 1-3/8, DC
26	1	M01329-P	ADAPTER, PUMP MOUNT, DC MON
27	1	M01134-P	FILTER SCREEN, SUCTION MON
28	1	M01209-P	TUBE, FILTER SUCTION, DC
29	1	M01274-P	TUBE, RETURN, 1/8" NPT
30	1	M06665-P	RESERVOIR, 4-1/2 X 12, DC
31	1	M01108-P	PLUG, 1/4 NPT, M301
32	1	M01143-P	PLUG, BREATHER, FILLER MON
33	6	M07703-P	SCREW, 10-24 X 3/8 TF
34	1	M01373-P	CABLE, W/ LUGS, 9", 6GA, M301
35	4	M07815-P	SCREW, 1/4-20 X 5/8, M301
* Recommended spare parts			