

Lift and Dispense a Drum

MORCINCH Drum Handling System

- Spark Resistant Parts for use in Hazardous Areas
- Control Lifting Height and Pouring Angle
- Removes Effort and Increases Productivity
- Power Lift and Tilt Options
- 360° Tilt Control in Either Direction
- Capacity:
800 Lb. (363 kg) full drum
500 Lb. (227 kg) half-full* drum



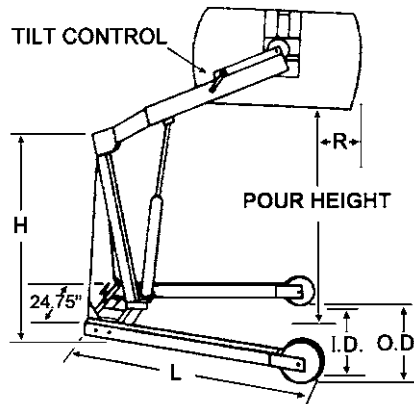
Model 400AM-72-114 with 72" (183 cm) dispensing height and AIR power lift and tilt.

Easily handle a heavy drum with a Morse Hydra-Lift Karrier. Lift, move and control pouring of a 55-gallon (210 liter) drum weighing up to 800 Lb. (363 kg) with minimal effort. Handle a variety of drums by installing the correct accessories for your drum. Models with maximum pouring heights of 72" or 96" (183 or 244 cm).

You can raise and control dispensing as necessary. Increase pouring angle for full discharge, reduce to control the pour rate, or reverse to stop pouring and deliver partial drum contents.

Material is poured forward straight from the drum with variable lift and pour angles. Faucets, pipe, valve extensions, etc. may be attached to the drum.

Though most often used to lift and pour, the Hydra-Lift Karrier can also be used to lift drums on and off scales, platforms, conveyors or trucks, move drums to or from storage, or position drums of parts for hand access at work stations.



- Automatically adjusts for 22" to 23.5" (56 to 59.7 cm) diameter drum
- Accepts Diameter Adaptors for smaller drums
- Accepts Top Rim Clamp or Bracket Assembly to handle a plastic drum



- Flexible cinch chain cover helps protect drum sidewall
- Stainless steel cinch chain
- Durable stress relief weld joints

Each Hydra-Lift Karrier Features

Heavy-duty hydraulic ram has a built-in flow control for a uniform, controlled speed of descent with even the heaviest drum. Heavy duty hydraulic lift cylinders include a velocity fuse to provide a full line shut-off in the event of a line failure.

Welded rectangular steel tube framework.

Maneuver on two 8" (20.3 cm) durable polyolefin wheels and two 4" (10.2 cm) swivel casters. A screw down floor lock.

Manual-Lift models have hydraulic hand pump with variable release valve for drum lift.

Manual-Tilt models have 30:1 reduction to make pouring your drum simple and easy.

Dimensions									
Model #	Maximum Dispensing Height	Tilt Control	R	H	L	O.D.	I.D.	Turning Radius	Domestic Ship Weight
400AM-60	72" 183 cm	Hand Crank	6" 15 cm	55" 140 cm	60" 152 cm	44" 112 cm	37" 94 cm	6'	319 Lb. 145 kg
400AM-72	72" 183 cm	Chain Wheel	6" 15 cm	55" 140 cm	60" 152 cm	44" 112 cm	37" 94 cm	6'	330 Lb. 150 kg
400AM-96	96" 244 cm	Chain Wheel	-3" -7.6 cm	69" 175 cm	72.5" 184 cm	49" 124 cm	42" 107 cm	7'	379 Lb. 172 kg

Reach Beyond Front Wheels with a 55-Gallon (210 liter) Steel Drum			
Model #	Dispensing Height	Reach with Horizontal Drum	Reach with Drum Pouring at 45 Degrees
400AM-60 or 400AM-72	36" (91.4 cm)	16" (40.6 cm)	2" (5.1 cm)
	48" (121.9 cm)	15" (38.1 cm)	0
	60" (152.4 cm)	12" (30.5 cm)	-7" (-17.8 cm)
400AM-96	72" (182.9 cm)	6" (15.2 cm)	- N/A -
	36" (91.4 cm)	11" (27.9 cm)	-1" (-2.5 cm)
	48" (121.9 cm)	13" (33 cm)	0
	60" (152.4 cm)	13" (33 cm)	-3" (-7.6 cm)
	72" (182.9 cm)	11" (27.9 cm)	-7" (-17.8 cm)
	84" (213.4 cm)	6" (15.2 cm)	-15" (-38.1 cm)
	96" (243.8 cm)	-3" (-7.6 cm)	-20" (-50.8 cm) at 90° (228.6 cm)

* Half-full rating is based on tilt mechanism's capacity for handling a bottom heavy drum. A partially full drum with unbalanced and shifting load is harder to tilt than a full drum.

Models with Power Lift and Tilt

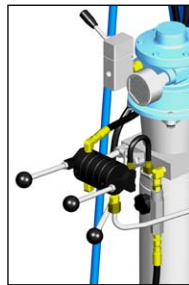
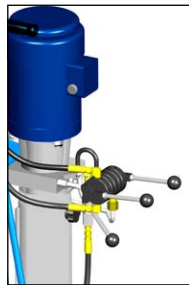
Ergonomic models with Power Lift and Tilt make drum handling easier and faster.

There are two hand valve controls: One for the power-lift function and a second for power-tilt.

Model #	Max. Pour Height	Motor Type	Motor Control	Ship Weight
400AM-60-111	60" (152 cm)	Explosion-proof AC, 1HP, 1-phase, 115V	Customer to provide Switch, Cord and Plug, and to wire according to local codes	423 Lb. (192 kg)
400AM-72-111	72" (183 cm)			403 Lb. (183 kg)
400AM-96-111	96" (244 cm)			457 Lb. (207 kg)
400AM-60-112	60" (152 cm)	Explosion-proof AC, 1HP, 3-phase, 230V	Customer to provide Switch, Cord and Plug, and to wire according to local codes	403 Lb. (183 kg)
400AM-72-112	72" (183 cm)			403 Lb. (183 kg)
400AM-96-112	96" (244 cm)			457 Lb. (207 kg)
400AM-60-114	60" (152 cm)	Air, Vane Type	On/Off Valve	423 Lb. (192 kg)
400AM-72-114	72" (183 cm)			423 Lb. (192 kg)
400AM-96-114	96" (244 cm)			421 Lb. (191 kg)

Electric Power Lift and Tilt

Hold momentary switch and lift valve to raise drum. Use second valve to control hydraulically driven drum tilt. Lower drum with manual release valve.



Air Power Lift and Tilt

Hold on/off valve and lift valve to raise drum. Use second valve to control hydraulically driven drum tilt. Lower drum with manual release valve. Air motor Requirements: 40 to 60 PSI at 40 SCFM.

MORCINCH™ Options

The MORCINCH™ drum holder on Hydra-Lift Karriers is designed to handle a 55-gallon (210 liter) steel or fiber drum. It automatically adjusts from 22" to 23.5" (56 to 59.7 cm) in diameter. The cinch chain with pawl and ratchet mechanism is used to secure the drum in the holder. To handle other drums, order one of the following:

The **Bracket Assembly** provides a brace at top and bottom of your drum to prevent it from slipping lengthways through the drum holder. The Bracket Assembly is required to handle a rimless plastic drum, and recommended to more securely handle a fiber drum. It adjusts for 31" to 39" (79 to 99 cm) tall drum.

Kit # 4556M-P Spark Resistant Bracket Assembly

The **Top Rim Clamp** grips the upper rim of a drum to prevent it from slipping through the drum holder. Use to handle a 55-gallon rimmed plastic or fiber drum. To handle a 55-gallon plastic drum with top rim, you must install either the Bracket Assembly or the Top Rim Clamp.

Kit # 4560M-P Spark Resistant Rim Clamp Assembly



Models with Power Lift, but Manual Tilt Control

Models with Powered Lift ease the process of lifting a heavy drum. The tilt control is still manual.

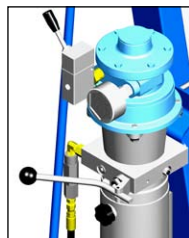
Models with 60" lift height have Hand crank tilt control.

Models with 72" and 96" lift heights have pull chain and chain wheel tilt control.

Model #	Max. Pour Height	Motor Type	Motor Control	Ship Weight
400AM-60-121	60" (152 cm)	Explosion-proof AC, 1HP, 1-phase, 115V	Customer to provide Switch, Cord and Plug, and to wire according to local codes	403 Lb. (183 kg)
400AM-72-121	72" (183 cm)			403 Lb. (183 kg)
400AM-96-121	96" (244 cm)			456 Lb. (207 kg)
400AM-60-122	60" (152 cm)	Explosion-proof AC, 1HP, 3-phase, 230V	Customer to provide Switch, Cord and Plug, and to wire according to local codes	403 Lb. (183 kg)
400AM-72-122	72" (183 cm)			403 Lb. (183 kg)
400AM-96-122	96" (244 cm)			456 Lb. (207 kg)
400AM-60-124	60" (152 cm)	Air, Vane Type	On/Off Valve	403 Lb. (183 kg)
400AM-72-124	72" (183 cm)			403 Lb. (183 kg)
400AM-96-124	96" (244 cm)			452 Lb. (205 kg)

Electric Power Lift, Manual Tilt

Use switch to raise the drum. Lower the drum with manual release valve.

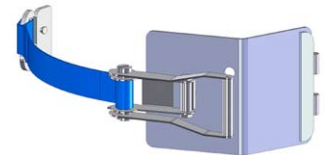


Air Motor Power Lift, Manual Tilt

Use on/off valve to raise the drum. Lower the drum with manual release valve. Air motor Requirements: 40 to 60 PSI at 40 SCFM.

Web Strap Option with Stainless Steel Ratchet

MORCINCH™ Drum Holder with Option # 5115Mi-P Web Strap and Ratchet installed



Diameter Adaptors

For a smaller diameter drum, install easily without tools and are quickly removed. Diameter Adaptors for 17.5" (44.5 cm) diameter or smaller have brackets at top and bottom of the drum. They adjust for a drum up to 38" (96.5 cm) tall.



Diameter Adaptors

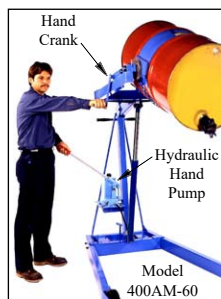
SPARK RESISTANT DIAMETER ADAPTORS	FITS DIAMETER	DOMESTIC SHIP WEIGHT
55/30M-20.5	20" to 20.5" (50.8 to 52.1 cm)	20 Lb. (9 kg)
55/30M-19	18.5" to 19" (47 to 48.3 cm)	24 Lb. (11 kg)
55/30M-17.5	17" to 17.5" (43.2 to 44.5 cm)	35 Lb. (16 kg)
55/30M-16	15.5" to 16" (39.4 to 40.6 cm)	35 Lb. (16 kg)
55/30M-14.5	14" to 14.5" (35.6 to 36.8 cm)	36 Lb. (16 kg)

Manual Lift and Tilt Models

Manual Tilt Controls

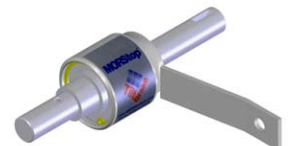
Model 400AM-60 has hand crank tilt control to pour at up to 60" (152 cm) high.

Models 400AM-72 and 400AM-96 have chain wheel tilt control with brass pull chain.



Manual Tilt Control Option

For added safety, we recommend the factory installed **MORStop Tilt-Brake (Option # 3900i-P)** to automatically hold drum tilt angle.





Model 400AM-96-111

Hydra-Lift Karrier with spark resistant parts, 96" (244 cm) lift height, electric powered drum lift and tilt control. Customer must provide Switch, Cord and Plug, and wire according to local codes.



Model 400AM-72-114

Hydra-Lift Karrier with spark resistant parts, with 72" (183 cm) lift height, air powered drum lift and tilt control.



Model 400AM-72-121

Hydra-Lift Karrier with spark resistant parts, with 72" (183 cm) lift height, electric powered drum lift, and manual pull chain drum tilt control. Customer must provide Switch, Cord and Plug, and wire according to local codes.



Model 400AM-72-124

Hydra-Lift Karrier with spark resistant parts, with 72" (183 cm) lift height, air powered drum lift, and manual pull chain drum tilt control.

MADE
 IN
 USA