



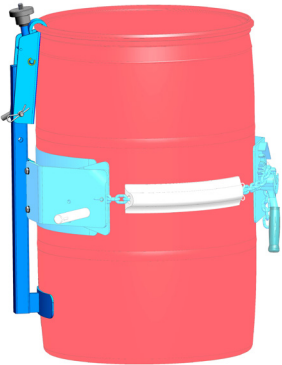
MODEL 185G-HD

Below-Hook Drum Karrier

SPECIFICATIONS SHEET

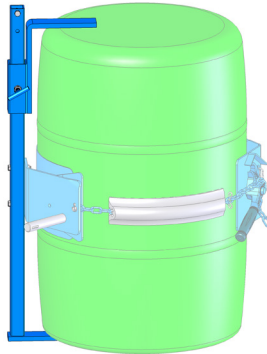
OPTIONS AND ACCESSORIES

Top Rim Clamp Kit 4560B-P



Install Top Rim Clamp Kit 4560B-P to safely handle a RIMMED 30-gallon to 55-gallon (114 to 210 liter) plastic drum. Grips upper drum rim to prevent slipping length-ways.

Bracket Assembly Kit 4556-P



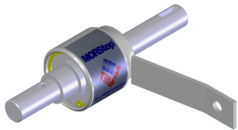
Install Bracket Assembly Kit 4556-P to prevent drum from slipping length-ways. **Required** to safely handle RIMLESS 55-gallon (210 liter) plastic drum. More securely holds fiber drum. Adjusts for 31" to 39" (78.7 to 99 cm) tall drum.

Diameter Adapter Model 55/30-19GR for 30-gallon (114 liter) drum



Insert Diameter Adapter 55/30-19GR to handle 19" (48.3 cm) diameter drum with model 185G-HD. Fits 18.5" to 19" (47 to 48.25 cm) diameter drum.

MORStop™ Tilt-Brake Automatically prevents unwanted drum tilting



Option 3900i-P

Factory installed MORStop™ Tilt-Brake Option on Kontrol-Karrier automatically holds drum tilt angle until operator turns drum

Kit 3900-P

MORStop™ Tilt-Brake Kit for customer to install on existing model 185G-HD

Hand Crank to turn drum



Option X02-185

Factory installed 9" (22.9 cm) Diameter Hand Crank

Kit 1460-P

Hand Crank for customer to install

Hand Wheel to turn drum



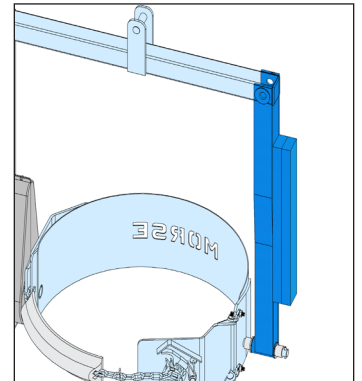
Option X03-185

Factory installed 16" (40.6 cm) Diameter Hand Wheel with speed knob

Kit 2690-P

Hand Wheel for customer to install

Counter Weight keeps unit level



Option 4622i-P

Factory installed Counter Weight keeps Heavy-Duty Kontrol-Karrier hanging plumb, even without drum in holder.

Kit 4622-P

Counter Weight Kit for customer to install on model 185G-HD.

Fork Pocket Kit

Fork Pocket Kit 6315-P

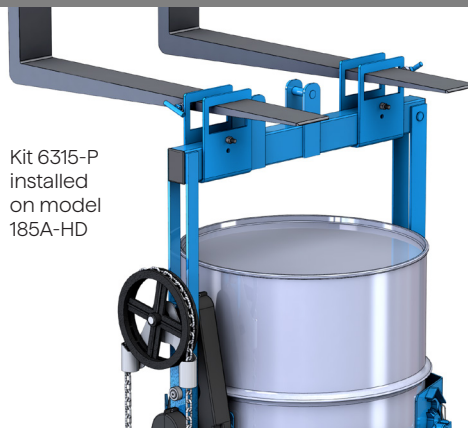
Add fork pockets to below-hook drum handler.

Install on model 85A, 85G, 85i, 86, 185A, 185G, 185A-HD or 185G-HD.

NOT for model with spark resistant parts.



Kit 6315-P installed on model 185A-HD





MODEL 185G-HD

Below-Hook Drum Carrier
SPECIFICATIONS SHEET

DIMENSIONS

