



MORSE 

MODEL 185G

SPECIFICATIONS SHEET

BELOW-HOOK DRUM POURER

*Lift, Move and Pour a Drum
with your hoist*

Kontrol-Karrier with 3-Piece Drum Holder

- Controlled, high-level pouring with 360° tilt control with 12-foot (3.6 m) chain loop
- 3-Piece Drum Holder for 22.5" (57.2 cm) diameter steel drum
- Insert Diameter Adapter 55/30-19GR for 19" (48.3 cm) diameter drum
- Bolt-on Top Rim Clamp 4560B-P for RIMMED plastic or fiber drum
- Bracket Assembly Option for a plastic or fiber drum
- Chain wheel tilt control, 60:1 gear ratio and safety covered gears
- Stands upright on foot support
- Handles drum with drum faucet in place
- Capacity: 800 Lb. (363 kg) full-drum
500 Lb. (227 kg) half-full drum

Half-full rating is an indication of capacity for tilting an unbalanced, bottom-heavy drum. A partially full drum with unbalanced and shifting load is harder to tilt than a full drum.



Attach lifting point to hoist hook. Raise hoist and engage holder at middle of drum. To secure drum, open toggle clamp and swing hinged bands open to engage drum between ribs.



Close hinged band around drum and latch toggle clamp.



Raise drum with hoist and use pull chain to control drum tilt.



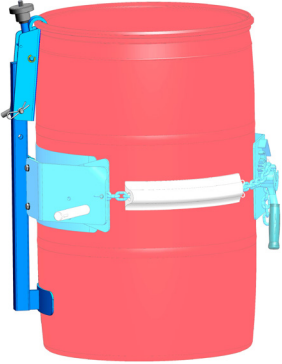
MODEL 185G

Below-Hook Drum Karrier

SPECIFICATIONS SHEET

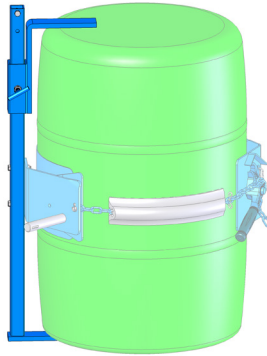
OPTIONS AND ACCESSORIES

Top Rim Clamp Kit 4560B-P



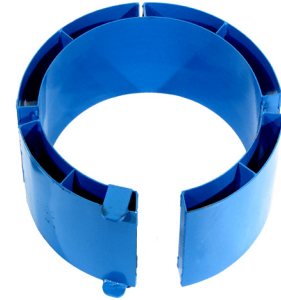
Install Top Rim Clamp Kit 4560B-P to safely handle a RIMMED 30-gallon to 55-gallon (114 to 210 liter) plastic drum. Grips upper drum rim to prevent slipping length-ways.

Bracket Assembly Kit 4556-P



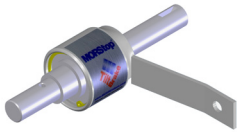
Install Bracket Assembly Kit 4556-P to prevent drum from slipping length-ways. **Required** to safely handle RIMLESS 55-gallon (210 liter) plastic drum. More securely holds fiber drum. Adjusts for 31" to 39" (78.7 to 99 cm) tall drum.

Diameter Adapter Model 55/30-19GR for 30-gallon (114 liter) drum



Insert Diameter Adapter 55/30-19GR to handle 19" (48.3 cm) diameter drum with model 185G. Fits 18.5" to 19" (47 to 48.25 cm) diameter drum.

MORStop™ Tilt-Brake Automatically prevents unwanted drum tilting



Option 3900i-P

Factory installed MORStop™ Tilt-Brake Option on Kontrol-Karrier automatically holds drum tilt angle until operator turns drum

Kit 3900-P

MORStop™ Tilt-Brake Kit for customer to install on existing model 185G

Hand Crank to turn drum



Option X02-185

Factory installed 9" (22.9 cm) Diameter Hand Crank

Kit 1460-P

Hand Crank for customer to install

Hand Wheel to turn drum



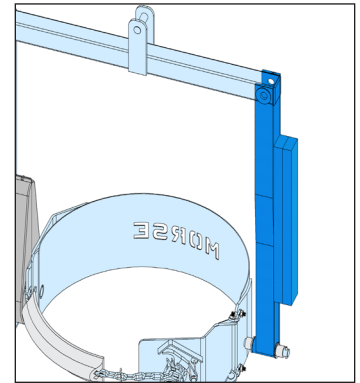
Option X03-185

Factory installed 16" (40.6 cm) Diameter Hand Wheel with speed knob

Kit 2690-P

Hand Wheel for customer to install

Counter Weight keeps unit level



Option 4623i-P

Factory installed Counter Weight keeps Kontrol-Karrier hanging plumb, even without drum in holder.

Kit 4623-P

Counter Weight Kit for customer to install on model 185G.

Fork Pocket Kit

Fork Pocket Kit 6315-P

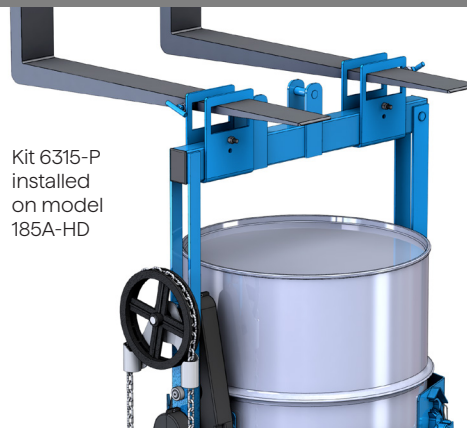
Add fork pockets to below-hook drum handler.

Install on model 85A, 85G, 85i, 86, 185A, 185G, 185A-HD or 185G.

NOT for model with spark resistant parts.



Kit 6315-P installed on model 185A-HD





DIMENSIONS

