



MORSE

MODEL 186

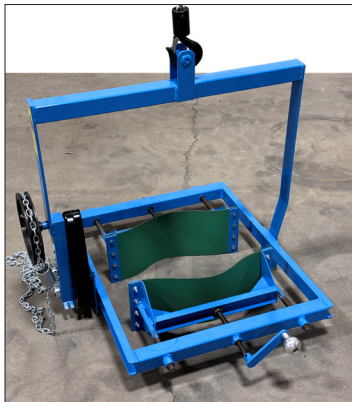
SPECIFICATIONS SHEET

ADJUSTO-KARRIER

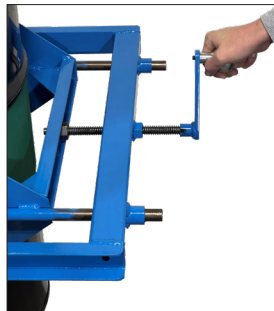
*Lift and Pour Various Size Drums
with Your Hoist*

Handle Wide Range of Drums

- Adjust for 15" to 23" (38.1 to 58.4 cm) diameter steel or fiber drum. NOT for use with plastic drum.
- Grip pads conform to drum curvature for secure grip
- Lift and pour drum with your crane or hoist
- Pull chain geared 360° tilt control
- Capacity: 500 Lb. (227 kg) full drum
250 Lb. (113.50 kg) half-full drum



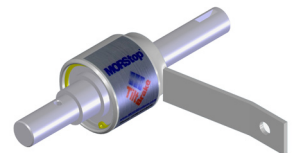
1. Attach Adjusto-KARRIER to hoist hook
2. Position Adjusto-KARRIER over drum and lower so grip pads are at center of load
3. Secure drum by adjusting screws on center rods on each side with removable hand crank
4. Lift drum with hoist
5. Tilt drum using pull chain loop



Morse recommends the **MORStop™ Tilt-Brake Option** to automatically hold drum tilt angle, until operator turns it

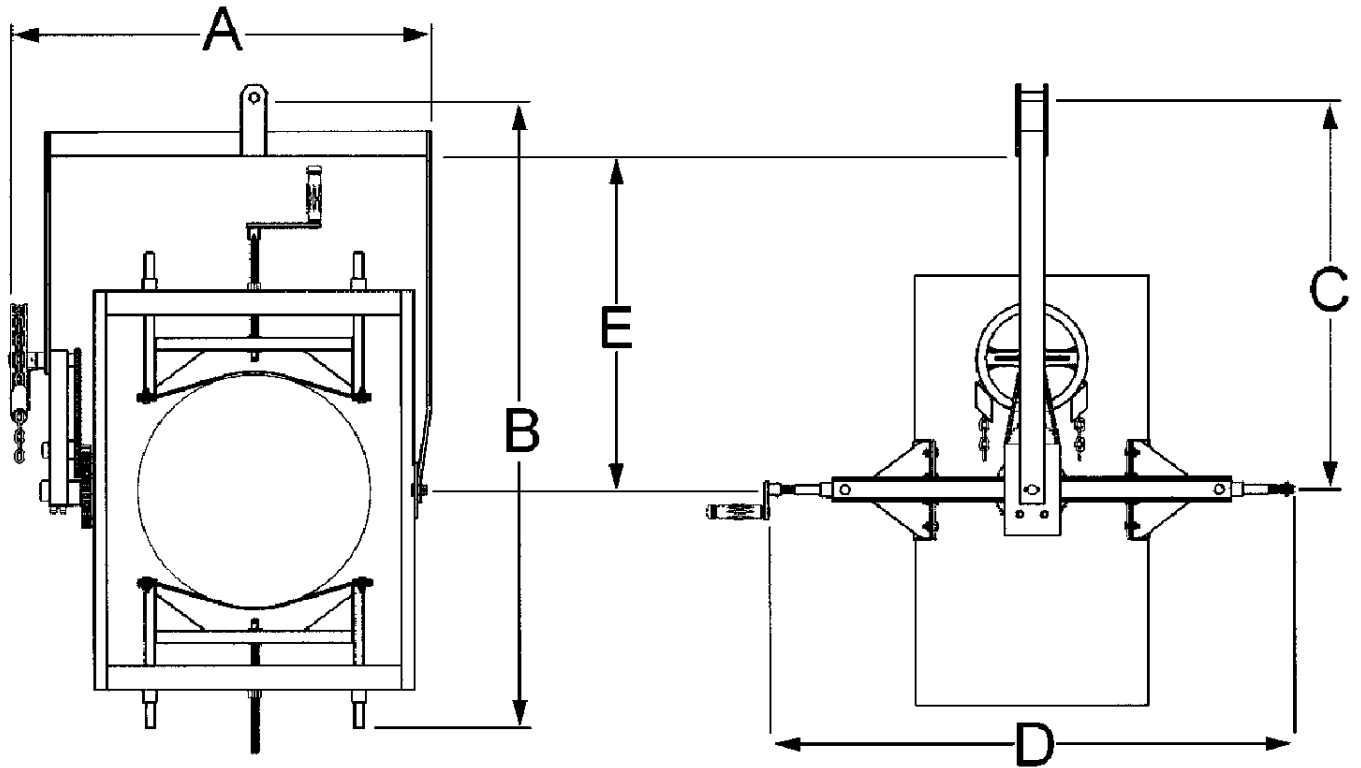
Option 3900i-P
Factory installed MORStop Tilt-Brake

Kit 3900-P
Kit for customer to install on existing drum handler





DIMENSIONS



Dimensions	
Dimension A	34.375" (87.3 cm)
Dimension B	48.125" (122.2 cm)
Dimension C	28.75" (73 cm)
Dimension D	Drum diameter + 20" (50.8 cm)
Dimension E	24.5" (62.2 cm)