



MORSE

MODEL 285G

SPECIFICATIONS SHEET

FORKLIFT DRUM POURER

Lift, Move and Pour a Drum with your fork truck

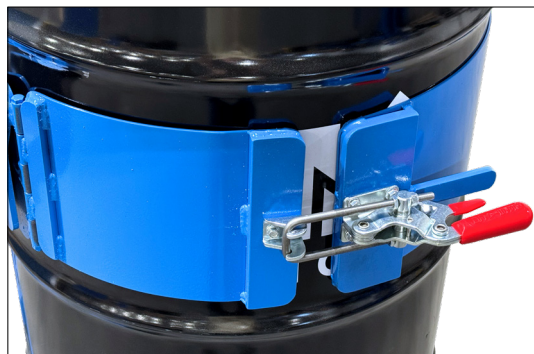
Forklift-Karrier with 3-Piece Drum Holder

- Control drum pouring with 360° tilt control with 20-foot (6 m) chain loop
- 3-Piece Drum Holder for 22.5" (57.2 cm) diameter steel drum
- Insert Diameter Adapter 55/30-19GR for 19" (48.3 cm) diameter drum
- Install Top Rim Clamp Kit for RIMMED plastic or fiber drum or Bracket Assembly Kit for RIMLESS plastic or fiber drum
- Chain wheel tilt control, 60:1 gear ratio and safety covered gears
- Capacity: 800 Lb. (363 kg) full-drum
500 Lb. (227 kg) half-full drum

Half-full rating is an indication of capacity for tilting an unbalanced, bottom-heavy drum. A partially full drum with unbalanced and shifting load is harder to tilt than a full drum.



To secure drum, open toggle clamp and swing hinged bands open.

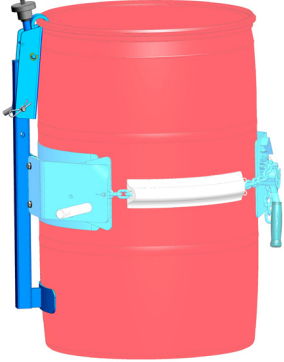


Push Forklift-Karrier to engage drum between ribs. Close hinged band around drum and latch toggle clamp.



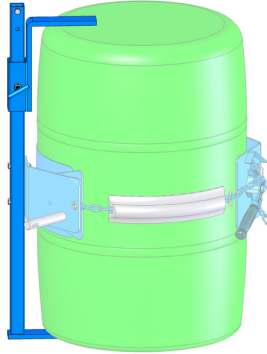
OPTIONS AND ACCESSORIES

Top Rim Clamp Kit 4560B-P



Install Top Rim Clamp Kit 4560B-P to safely handle a RIMMED 30-gallon to 55-gallon (114 to 210 liter) plastic drum. Grips upper drum rim to prevent slipping length-ways.

Bracket Assembly Kit 4556-P



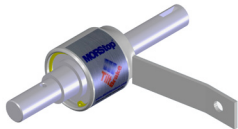
Install Bracket Assembly Kit 4556-P to prevent drum from slipping length-ways. **Required** to safely handle RIMLESS 55-gallon (210 liter) plastic drum. More securely holds fiber drum. Adjusts for 31" to 39" (78.7 to 99 cm) tall drum.

Diameter Adapter Model 55/30-19GR for 30-gallon (114 liter) drum



Insert Diameter Adapter 55/30-19GR to handle 19" (48.3 cm) diameter drum with model 285G. Fits 18.5" to 19" (47 to 48.25 cm) diameter drum.

MORStop™ Tilt-Brake
Automatically prevents unwanted drum tilting



Option 3900i-P

Factory installed MORStop™ Tilt-Brake Option on Forklift-Karrier automatically holds drum tilt angle until operator turns drum

Kit 3900-P

MORStop™ Tilt-Brake Kit for customer to install on existing model 285G

Hand Crank to turn drum



Option X02-285

Factory installed 9" (22.9 cm) Diameter Hand Crank

Kit 1460-P

Hand Crank for customer to install

Hand Wheel to turn drum



Option X03-285

Factory installed 16" (40.6 cm) Diameter Hand Wheel with speed knob

Kit 2690-P

Hand Wheel for customer to install



DIMENSIONS

