

#### Super-Duty Forklift-Karriers

MADE  
IN  
USA

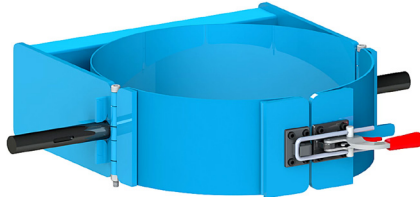
- **Capacity: 2500 Lb. (1134 kg)**
- **Hand operated geared tilt**
- **360° drum tilt control in both directions**
- **Quick, sure drum handling with your forklift**
- **Save time, reduce waste, improve productivity**
- **Controlled drum pouring**

#### Morse manual drum tilt Forklift-Karrier

Morse Super-Duty Forklift-Karriers have pull chain and chain wheel for manual drum tilt control with 20 foot (6 m) loop of chain to reach 10 foot (3 m) back to the forklift operator. There is enough resistance in the enclosed gear box to automatically stop and hold drum tilt angle. Hand wheel tilt control option is also available.

Extra-heavy-duty construction with steel tube framework, large shafts and bearings offer long life in tough service. The oil filled, worm gear speed reducer provides 150:1 gear reduction for fine control when tipping heavy drums.

The 3-Piece Drum Holder with 2 hinged metal bands and a clamp in the front is sized for your standard ribbed 55-gallon (210 liter) 22.5" (571.5 mm) diameter steel drum.



**Model 285XMGR** adds [spark resistant parts](#) to reduce the possibility of mechanical sparks.

Full Drum Capacity 2500 Lb. (1134 kg). Half-full drum capacity is 1250 Lb. (567 kg) Half-full rating is an indication of capacity for tilting an unbalanced, bottom-heavy drum. A partially full drum with unbalanced and shifting load is harder to tilt than full drum.

Ships fully assembled.

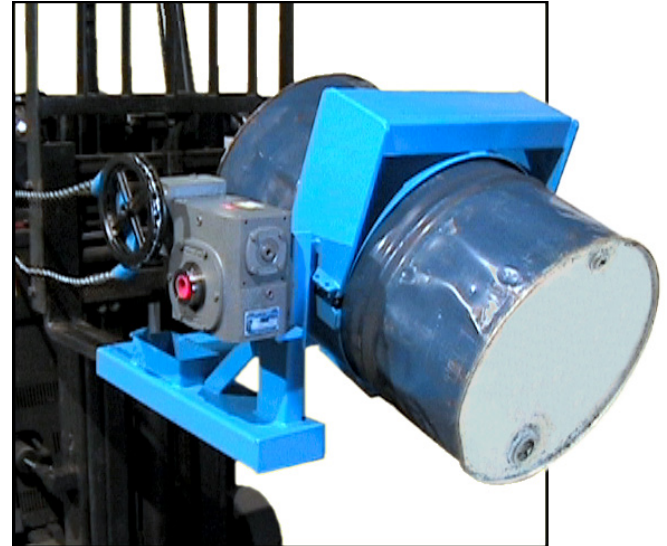
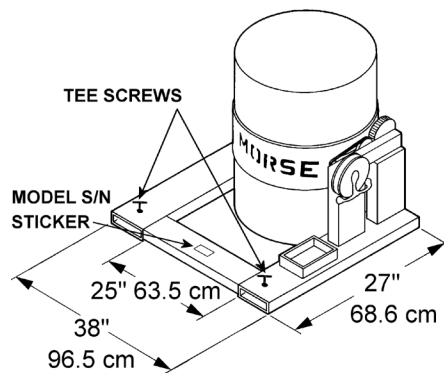
#### Dimensions

Each fork pocket opening is 6.5" wide x 2.5" high (165 x 63.5 mm).

Fork pockets are 26.5" deep (67.3 cm).

Inside width between forks must be at least 25" (635 mm).

NOTE: Standard pull chain loop extends approximately 10 feet (3 m) beyond chain wheel. Custom lengths are available.

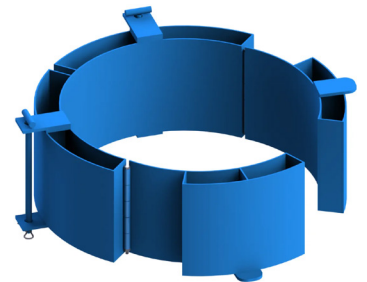


#### Steps to use Super-Duty Forklift-Karrier

1. Drive truck forks into Super-Duty Forklift-Karrier's fork pockets, then dismount and screw down the safety locks to grip the forks.
2. Drive to drum at ground level, so that drum holder meets center of drum.
3. Secure drum in drum holder between drum ribs... no tools are needed.
4. Raise forklift carriage with secured drum. Then travel to dumping location.
5. To turn drum without leaving forklift, pull chain loop to control drum tilt.
6. Lower drum to floor. Then release 3-piece drum holder latch.
7. Loosen screw down safety locks. Then back forks out of fork pockets.

#### Options and Accessories

- **Option X03-285XGR** - 10" (254 mm) Hand Wheel with speed handle to replace standard chain wheel with hand wheel to turn drum.
- **Model 55/30-19GR Diameter Adapter.** Simply insert Diameter Adapter into drum holder to use model 285XGR for 19" (482.5 mm) diameter 30-gallon (114 liter) steel drum. Quickly and easily install Diameter Adapter in drum holder. Then simply lift it back out to return to handling 55-gallon (210 liter) steel drum.



Model #	Super-Duty Forklift-Karrier	Capacity	19" Diameter Adapter	Ship Weight
285XGR	Forklift-Karrier	2500 Lb. (1134 kg)	55/30-19GR	270 Lb. (122.5 kg)
285XMGR	Forklift-Karrier with Spark Resistant Parts	2500 Lb. (1134 kg)	None	270 Lb. (122.5 kg)



[morsedrum.com](http://morsedrum.com)



[service@morsedrum.com](mailto:service@morsedrum.com)



(315) 437-8475



103 Kuhn Rd.  
Syracuse, NY, 13208 USA