



MORSE 

MORStop

SPECIFICATIONS SHEET

MORSTOP TILT-BRAKE

Prevents Drum from Turning Out Of Control

Automatically Holds Drum Tilt Position, So You Don't Have To

- Anti-backdrive device automatically prevents drum from turning out of control, even when drum contents shift from one end to the other
- Adds Automatic Self-Stop and Hold to drum tilting
- Provides even greater ease of use and improved control

What is the MORStop™ Tilt-Brake?

It is a simple, compact anti-backdrive device that functions smoothly and quietly in both directions. The unique MORStop Tilt-Brake mechanism automatically stops and holds the drum tilt angle! Without the Tilt-Brake, operators may need to manually lock the pull-chain or crank handle to prevent unwanted drum rotation, especially when dispensing a heavy, unbalanced drum.

- Option 3900i-P Factory Installed MORStop™ Tilt-Brake on many Morse models with manual drum tilt control.
- Kit 3900-P for Customer to Install MORStop™ Tilt-Brake on existing unit with hand crank, chain-wheel or hand wheel.

Advantages and Benefits:

- Gives the operator unprecedented control and ease of use by holding the drum tilt position constant even when removing tension from the pull-chain or crank handle.
- Eliminates backdrive from heavily loaded, unbalanced drum and prevents drum from tilting due to its own weight-shift
- Braking is immediate and self-actuating, without additional steps by the user
- Braking action works in either forward or reverse tilt-direction



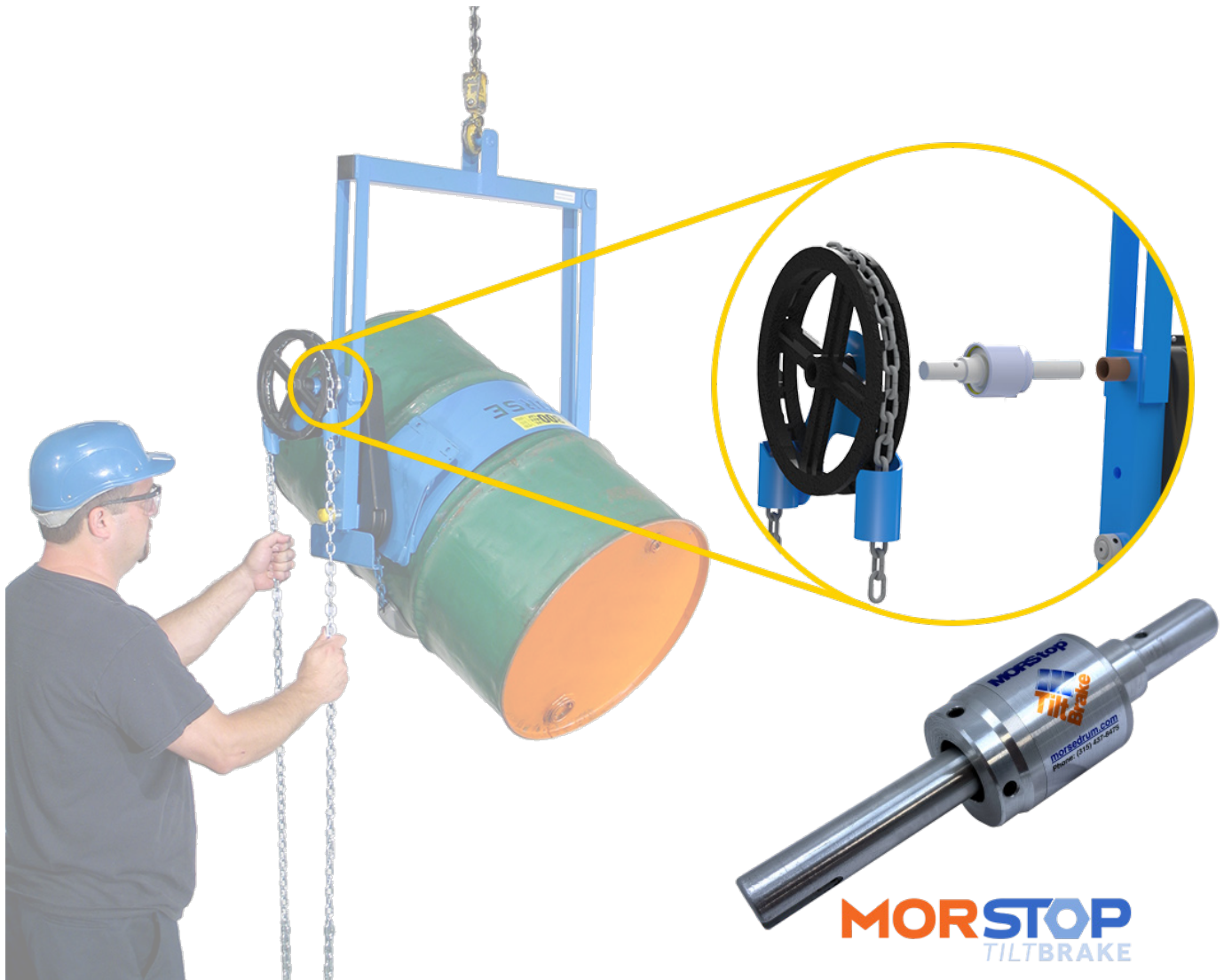
MORSTOP
TILT BRAKE



MORSTOP

Tilt-Brake

SPECIFICATIONS SHEET



MORStop™ Tilt-Brake on model 185A Kontrol-Karrier

MORStop™ Tilt-Brake fits

Hydra-Lift Karriers with hand crank or chain wheel manual tilt control, or with hand wheel option.
Forklift-Karriers with chain wheel tilt control, hand crank or hand wheel manual tilt control (shown left).

Below Hook Kontrol-Karriers with chain wheel tilt control, hand crank or hand wheel manual tilt control option (shown right).

The MORStop™ Tilt-Brake extends the tilt control 3" (7.6 cm).



MORSTOP

Tilt-Brake

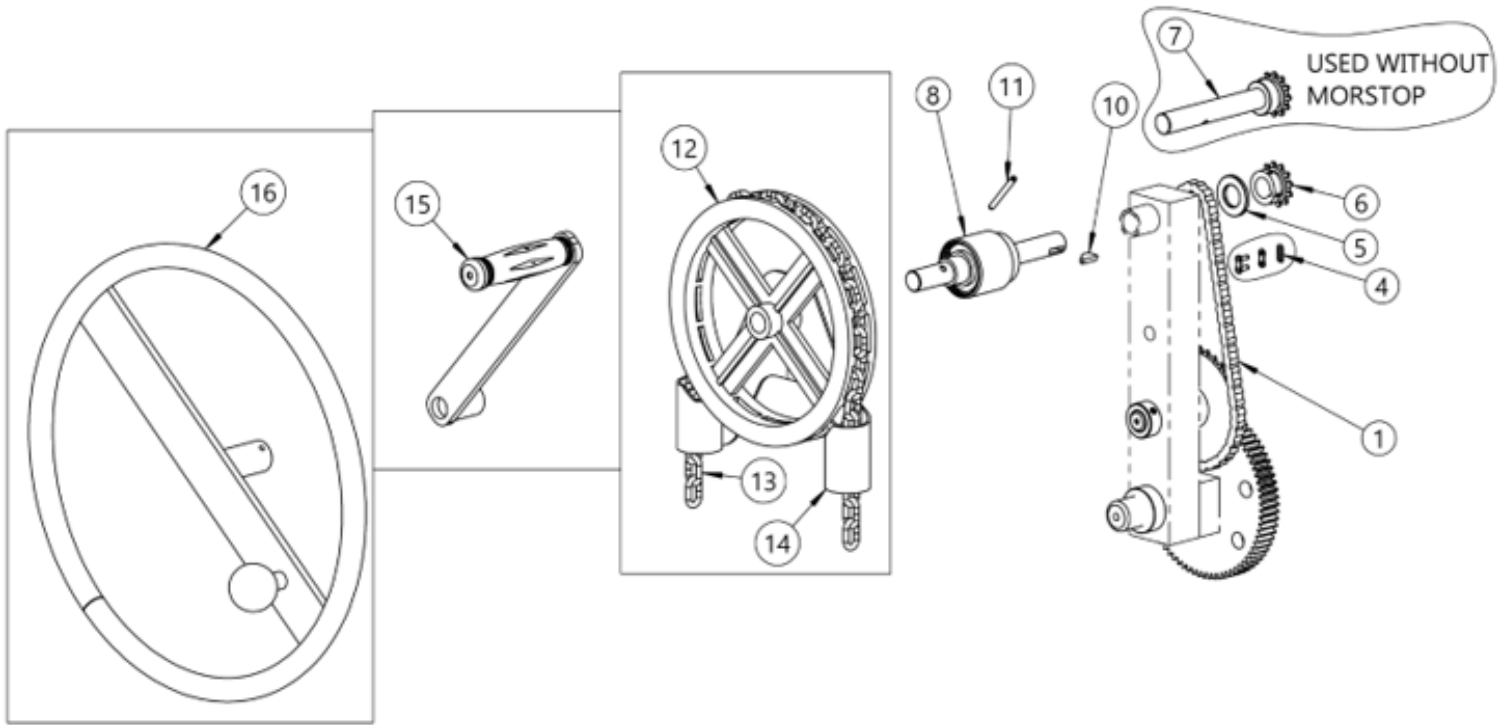
SPECIFICATIONS SHEET

Option 3900i-P

Factory Installed MORStop™ Tilt-Brake installed on new unit.

Kit 3900-P

Kit for customer to install MORStop™ Tilt-Brake on existing Morse unit. Install on many Morse models with manual drum tilt control (chain wheel, hand crank or hand wheel).



Items Included in MORStop™ Tilt-Brake Kit 3900-P			
Item	Qty.	Part Number	Description
5	1	55-P	WASHER, 3/4 SAE FL 1-1/2 OD
6	1	11-P	SPROCKET #35 12T, 3/4" BORE
8	1	3901-P	MORStop TILT BRAKE
10	1	735-P	KEY, WOODRUFF, 9, ASA606 3/16"
11	1	5269-P	ROLL PIN, 3/16 X 1-3/4

Other Items Shown			
Item	Qty.	Part Number	Description
1	1	12-P	CHAIN, ROLLER, #35 W/ M LINK
4	1	795-P	LINK, MASTER, #35 CHAIN
7	1	5135-P	SHAFT, 12T SPROCKET & SPACER
12	1	1303-P	POCKET CHAIN WHEEL, 3/4 BORE
13	1	3-185-P	CHAIN, PULL, POCKET 12' LENGTH
14	1	5245-P	GUIDE, POCKET CHAIN WHEEL
15	1	5U-P	HAND CRANK, W/ SOCKET TUBE
16	1	2685-P	HANDWHEEL, 16", 3/4B w/ KNOB