



MORSE

400AM SERIES

SPECIFICATIONS SHEET

HYDRA-LIFT KARRIERS

with Spark Resistant Parts

Lift, move and control drum pouring of heavy drum with minimal effort.

- Spark Resistant Parts for use in Hazardous Areas
 - Control Lifting Height and Pouring Angle
 - Increase Safety and Productivity
 - Models with Power Lift and Tilt
 - 360° Tilt Control in Either Direction
 - Capacity: 800 Lb. (363 kg) full drum
500 Lb. (227 kg) half-full drum
- Half-full rating is an indication of capacity for tilting unbalanced, bottom-heavy drum. Partially full drum with shifting load is harder to tilt than a full drum.

Material is poured forward straight from drum with variable lift and pour angles. Works with faucet, pipe, valve extension, etc. attached to drum.

- Lift drums on and off scales, platforms, conveyors or trucks
- Move drums to and from storage
- Position drum of parts for access at work stations



Model 400AM-72-114
with 72" (183 cm)
dispensing height and
Air power lift and tilt

MORCINCH™ Drum Holder

- Automatically adjusts for 22" to 23.5" (560 to 597 mm) diameter drum
- Includes a flexible cinch chain cover to help protect drum sidewall
- Stainless steel cinch chain and durable stress relief weld joints

Options for various other drums

- Insert correct size Diameter Adapter for each smaller drum
- Install Bracket Assembly to prevent plastic drum from slipping. Also recommended to more securely handle fiber drum.
- Install Top Rim Clamp for RIMMED 55-gallon (210 liter) plastic drum

MORCINCH Drum Holder





400AM SERIES

Spark Resistant Hydra-Lift Carrier

SPECIFICATIONS SHEET

Lift, Move and Dispense Drum

Each Hydra-Lift Karrier Features

- Heavy-duty hydraulic ram with built-in flow control for controlled speed of descent, even with heaviest drum. Hydraulic cylinder with velocity fuse provides full shut-off in case of line failure.
- Welded rectangular steel tube framework.
- Two 8" (203 mm) durable polyolefin front wheels and two 4" (102 mm) rear swivel casters.
- Screw down floor lock.
- Manual-Lift models have hydraulic hand pump with variable release valve for drum lift.

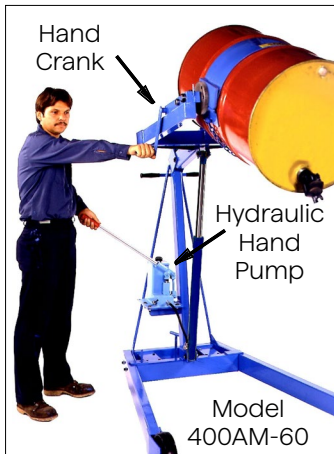


Models with Manual Tilt Control

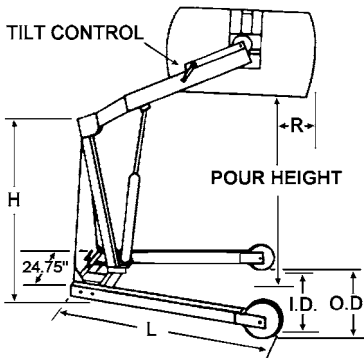
Simple and easy drum pouring with 30:1 reduction.

Manual Tilt 400AM-60 Series have hand crank tilt control.

Manual Tilt 400AM-72 and 400AM-96 Series have pull chain and chain wheel tilt control.



Reach Beyond Front Wheels with 55-Gallon (210L) Steel Drum			
Series	Pour Height	Reach with Horizontal Drum	Reach with Drum Pouring at 45 Degrees
400AM-60 400AM-72	36" (914mm)	16" (406mm)	2" (51mm)
	48" (1219mm)	15" (381mm)	0
	60" (1524mm)	12" (305mm)	-7" (178mm)
	72" (1829mm)	6" (152mm)	- N/A -
400AM-96	36" (914mm)	11" (279mm)	-1" (-25mm)
	48" (1219mm)	13" (330mm)	0
	60" (1524mm)	13" (330mm)	-3" (-76mm)
	72" (1829mm)	11" (279mm)	-7" (-178mm)
	84" (2134mm)	6" (152mm)	-15" (-381mm)
	96" (2438mm)	-3" (76mm)	-20" (-508mm) at 90" (2286mm)



Model	Max. Pour	Lift Style	Tilt Control	Motor	R	H	L	O.D.	I.D.	Turn Radius
400AM-60	72" 1829mm	Hand Pump	Hand Crank	-	6" 150mm	55" 1400mm	60" 1520mm	44.3" 1125mm	37" 940mm	6" 1829mm
400AM-60-111		AC Power	AC Power	AC Motor						
400AM-60-114		Air Power	Air Power	Air Motor						
400AM-60-121		AC Power	Hand Crank	AC Motor						
400AM-60-124		Air Power	Hand Crank	Air Motor						
400AM-72	72" 1829mm	Hand Pump	Pull Chain	-	6" 150mm	55" 1400mm	60" 1520mm	44.3" 1125mm	37" 940mm	6" 1829mm
400AM-72-111		AC Power	AC Power	AC Motor						
400AM-72-114		Air Power	Air Power	Air Motor						
400AM-72-121		AC Power	Pull Chain	AC Motor						
400AM-72-124		Air Power	Pull Chain	Air Motor						
400AM-96	96" 2438mm	Hand Pump	Hand Crank	-	-3" -760mm	69" 1750mm	72.5" 1840mm	49" 1240mm	42" 1070mm	7" 2134mm
400AM-96-111		AC Power	AC Power	AC Motor						
400AM-96-114		Air Power	Air Power	Air Motor						
400AM-96-121		AC Power	Pull Chain	AC Motor						
400AM-96-124		Air Power	Pull Chain	Air Motor						

Options and Accessories

MORCINCH™ OPTIONS

MORCINCH™ drum holder automatically adjusts for 22" to 23.5" (560 to 597 mm) diameter steel drum. Cinch chain with pawl and ratchet secure drum in holder.

To safely handle other drums, install one of the following:

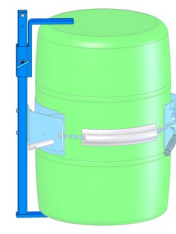
- **Top Rim Clamp Kit 4560BM-P** prevents RIMMED plastic or fiber slipping length-ways. Handle 30-gallon or 55-gallon (114 or 210 liter) size drum.
- **Bracket Assembly Kit 4556M-P** prevents drum from slipping length-ways. REQUIRED for RIMLESS plastic drum, and recommended for fiber drum. Adjust for 31" to 39" (790 to 990 mm) tall drum.

Diameter Adapters

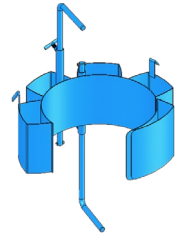
Insert correct Diameter Adapter for smaller drum into drum holder. Some have integrated brackets to prevent drum slipping. Adjust brackets for up to 38" (965 mm) tall drum.



Top Rim Clamp



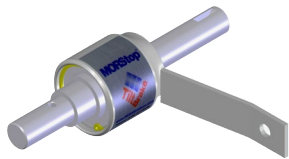
Bracket Assembly



Diameter Adapter with Brackets

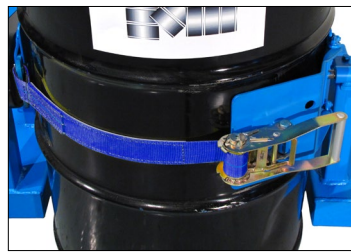
Spark Resistant Diameter Adapters		
MODEL	FITS DRUM DIAMETER	INTEGRATED BRACKETS
55/30M-20.5	20" to 20.5" (508 to 521 mm)	No
55/30M-19	18.5" to 19" (470 to 483 mm)	No
55/30M-19B	18.5" to 19" (470 to 483 mm)	Yes
55/30M-17.5	17" to 17.5" (432 to 445 mm)	Yes
55/30M-16	15.5" to 16" (394 to 406 mm)	Yes
55/30M-14.5	14" to 14.5" (356 to 368 mm)	Yes

MORSTOP TILT BRAKE



MORSTOP Tilt-Brake™ Option recommended for manual tilt models. Automatically holds drum tilt angle and prevents uncontrolled turning.

Option 3900i-P
Factory installed Tilt-Brake



Web Strap with Ratchet to replace standard cinch chain around drum.

Option 5115Mi-P
Factory installed Web Strap and Spark Resistant Ratchet.



16" (406 mm) Diameter Hand Wheel to replace pull chain tilt control.

Option X03-400M-72
for 400AM-72 Series

Option X03-400M-96
for 400AM-96 Series



9" (229 mm) Hand Crank to replace standard pull chain tilt control.

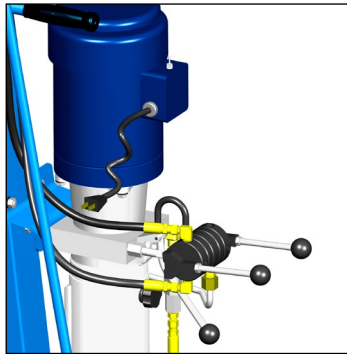
Option X02-400M-72
for 400AM-72 Series

Option X03-400M-96
for 400AM-96 Series

Power Lift and Tilt Models

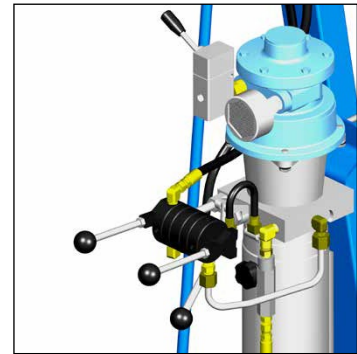
Power Lift and Tilt Models make drum handling easier and faster. There are two hand valve controls, one for the power-lift function and a second for power-tilt.

POWER SUFFIX	MOTOR TYPE	MOTOR CONTROL
-111	AC, 1HP/115V, TEFC	Switch, Cord, Plug
-114	Air, Vane Type	On/Off Valve



Electric Power Lift and Tilt

Hold momentary switch and lift valve to raise drum. Use second valve to control the hydraulically driven drum tilt. Lower the drum with manual release valve.



Air Power Lift and Tilt

Hold on/off valve and lift valve to raise the drum. Use a second valve to control the hydraulic drum tilt. Lower the drum with manual release valve. *Air motor requirements: 40 to 60 PSI at 40 SCFM.*

Power Lift Models with Manual Tilt

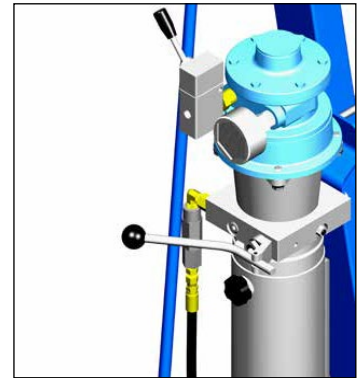
Power-Lift Models ease drum lifting, but retain manual tilt control. Hand crank tilt control is on 60" (1520mm) lift height units. Models with 106" (2690mm) lift heights have pull chain and chain wheel tilt control.

POWER SUFFIX	MOTOR TYPE	MOTOR CONTROL
-121	AC, 1HP/115V, TEFC	Switch, Cord, Plug
-124	Air, Vane Type	On/Off Valve



Electric Power Lift

Use switch to raise the drum. Lower the drum with manual release valve.



Air Motor Power Lift

Use on/off valve to raise the drum. Lower the drum with manual release valve. *Air motor Requirements: 40 to 60 PSI at 40 SCFM.*



Model 400AM-96-111

Hydra-Lift Karrier with 96" (2438mm) lift height, electric powered drum lift and tilt control



Model 400AM-72-114

Hydra-Lift Karrier with 72" (1829mm) lift height, air powered drum lift and tilt control



Model 400AM-72-124

Hydra-Lift Karrier with 72" (1829mm) lift height, air powered drum lift, and manual pull chain drum tilt control



morsedrum.com



service@morsedrum.com



(315) 437-8475



103 Kuhn Road, Syracuse, NY, 13208 USA