



410 SERIES

SPECIFICATIONS SHEET

HEAVY-DUTY HYDRA-LIFT KARRIERS

Lift and Pour up to 1200 Lb. (544 kg) Drum

Hydra-Lift Karriers Lift, Move & Dispense Drums

A fully loaded drum is easily handled by one person with a Morse Heavy-Duty Hydra-Lift Karrier. Lift, move and control pouring of a 55-gallon (210 liter) steel drum weighing up to 1200 Lb. (544 kg) with minimal physical effort. Maximum pouring height is 72" (183 cm). Handle a variety of other drums by installing the correct MORCINCH™ options for your particular size and type of drum.

You raise and control dispensing as necessary. Increase pouring angle for full discharge, reduce to control the pour rate, or reverse to stop pouring and deliver partial drum contents.

Material is discharged straight forward directly from the drum. Faucets, pipe, valve extensions may be attached to the drum. The ability to control pouring straight from the drum with variable lift and pour angles is an important difference from chute type dumpers.

Though often used for lifting and pouring, the Hydra-Lift Karrier can be used in various ways, such as lifting drums on or off scales, platforms, conveyors or trucks, moving drums to or from storage, charging high tanks and positioning drums of parts for hand access at work stations.

- You Control Lifting Height and Pouring Angle
- Removes Effort and Increases Productivity
- Models with Power Lift and Tilt
- Heavy-Duty Hydraulics
- 360° Tilt Control in Either Direction
- Capacity: 1200 Lb. (544 kg) full drum (600 Lb. (272 kg) half-full* drum)
- Models with Spark Resistant Parts

**Half-full rating is based on tilt mechanism's capacity for handling a bottom heavy drum. A partially full drum with unbalanced and shifting load is harder to tilt than a full drum.*



Model 410-115
with 72" (1830 mm)
maximum dispensing height
and 12V Battery Power lift and tilt



410 SERIES

Heavy-Duty Hydra-Lift Karriers

SPECIFICATIONS SHEET

Each Heavy-Duty Hydra-Lift Karrier Features

Dual Heavy-duty hydraulic cylinders with a built-in flow control for a uniform, controlled speed of descent with even the heaviest drum. Heavy duty hydraulic lift cylinders include a velocity fuse to provide a full line shut-off in the event of a line failure.

- Welded rectangular steel tube framework.
- Easy maneuverability on two rear 4" (102 mm) nylon swivel casters and two front 4" (102 mm) diameter fixed wheels.
- Step-down floor lock.



Pull chain and chain wheel manual tilt

Model Options

Power Lift, Manual Tilt Models have electric, air or battery power lift, but a pull chain and chain wheel for drum tilt control. Covered tilt gears with 60:1 reduction make pouring your drum simple and easy.

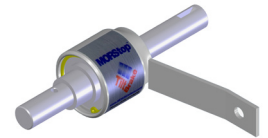
Manual Lift and Tilt Models have a hydraulic hand pump with variable release valve for drum lift, and pull chain and chain wheel drum tilt control.

Option X02-410

Factory installed Hand Crank on 410 Series with manual tilt control. Replaces pull chain tilt control.

Option X03-410

Factory installed 16" (406 mm) Diameter Hand Wheel (not shown) on 410 Series with manual tilt control. Replaces pull chain tilt control.

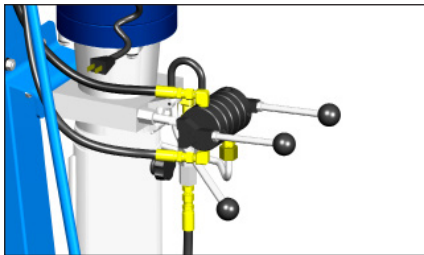


MORStop Tilt-Brake

The MORStop Tilt-Brake is factory installed on all manual tilt models to automatically hold the drum tilt angle, even if the drum's contents shift suddenly.

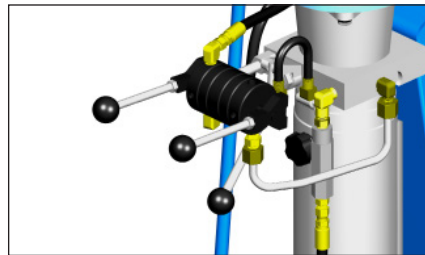
MODELS WITH POWER LIFT & TILT

Power Lift and Tilt makes drum handling easier and faster. There are two hand valve controls: One for the power-lift function and a second for power-tilt. **Power Lift and Tilt Models** are available with electric, air or battery power lift and tilt.



Electric Power Lift & Tilt

Hold momentary switch and lift valve to raise drum. Use second valve to control the hydraulically driven drum tilt. Lower the drum with manual release valve. UL listed motor with 12.8 full amp draw.



Air Power Lift and Tilt

Hold on/off valve and lift valve to raise the drum. Use a second valve to control the hydraulically driven drum tilt. Lower the drum with manual release valve. Air motor Requirements: 40 to 60 PSI at 40 SCFM.



Battery Power Lift and Tilt

Self contained battery power lift and tilt. Operate battery power controls to raise and tilt drum. Separate charger is included.

MODELS WITH POWER LIFT & MANUAL TILT

Power-Lift models ease drum lifting, but retain manual tilt control.



410 SERIES

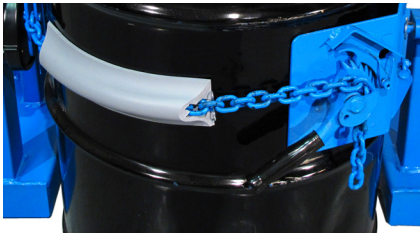
Heavy-Duty Hydra-Lift Karriers

SPECIFICATIONS SHEET

Heavy-Duty Hydra-Lift Karriers

MODEL	DESCRIPTION	MOTOR TYPE	MOTOR CONTROL	DOMESTIC SHIP WEIGHT
410-110	60Hz AC Power Lift and Tilt	AC, 1HP/115V, TEFC	Switch, Cord, Plug	560 Lb. (255 kg)
410-114	Air Power Lift and Tilt	Air, Vane Type	On/Off Valve	550 Lb. (250 kg)
410-115	DC Power Lift and Tilt	DC, 12V	Built-In	600 Lb. (273 kg)
410-120	60Hz AC Power Lift, Manual Tilt	AC, 1HP/115V, TEFC	Switch, Cord, Plug	536 Lb. (244 kg)
410-124	Air Power Lift, Manual Tilt	Air, Vane Type	On/Off Valve	515 Lb. (234 kg)
410-125	DC Power Lift, Manual Tilt	DC, 12V	Built-In	569 Lb. (259 kg)
410M-114	Air Power Lift and Tilt with Spark Resistant Parts	Air, Vane Type	On/Off Valve	550 Lb. (250 kg)
410M-124	Air Power Lift, Manual Tilt with Spark Resistant Parts	Air, Vane Type	On/Off Valve	515 Lb. (234 kg)

MORCINCH DRUM HANDLING SYSTEM



- Automatically adjusts for 22" to 23.5" (560 to 597 mm) diameter drum
- Accepts Diameter Adaptors for your smaller drum
- Bolt-On Bracket Assembly to handle a plastic drum, recommended to more securely handle a fiber drum
- Bolt-on Top Rim Clamp for 55-gallon (210 liter) plastic drum or fiber drum
- Includes a flexible cover on the cinch chain to help protect the sidewall of your drum
- Incorporates alloy cinch chain and durable stress relief weld joints



410 SERIES

Heavy-Duty Hydra-Lift Karriers

SPECIFICATIONS SHEET

Dimensions

