

**Operator's Manual for  
MORSE 185M Series Kontrol-Karriers with Spark Resistant Parts  
Serial # 0188 - 0407**

**185A-M for 55 gal. standard steel drums (22 ½" diameter)**  
**185B-M for 30 gal. standard steel drums (19" diameter)**  
**185C-M for steel or fibre drums (21 - 23" diameter)**  
**185D-M for steel or fibre drums (19 - 20 ½" diameter)**  
**The letter M designates "Made with spark resistant parts."**

**A. IMPORTANT:**

1. Review the Material Safety Data Sheet(s) for the material(s) in the drum(s) and take all necessary precautions. Safety shoes, work gloves, hard hat and other personal protective devices are recommended.
2. Please read all instructions *thoroughly* before attempting to operate your new MORSE drum handler.
3. The models 185A-M, 185B-M, 185C-M, and 185D-M have a maximum capacity rating of 800 Lb. FULL drum and 500 Lb. HALF-FULL and are intended for lifting, moving and pouring drums of size and type noted above. *DO NOT* exceed these ratings as an unsafe condition may result which could cause damage or excessive wear, or make the unit awkward to handle.
4. When loading, unloading, operating, or maintaining your MORSE drum handler, always use care and good judgment, have good footing and a firm hold. Keep hands and loose clothing, etc. away from all moving parts. Never allow anyone to be below any part of a raised drum handler or drum. Read operating instructions and review the pictures in the sales brochure before operation.
5. The Model 185M Series is a "Group 1 - Structural and Mechanical" Below-the-Hook Lifting Device which is covered by the American National Standard ANSI/ASME B30.20. The user should comply with all aspects of this standard.

**B. OPERATING INSTRUCTIONS:**

1. With Kontrol-Karrier standing on the floor, lower hoist and engage hoist hook into the lifting eye.
2. Raise hoist to lift Kontrol-Karrier clear of floor and move it to the drum.
3. Position Kontrol-Karrier at a height which aligns the saddle band with the center of the drum.
4. With the cinch chain (item 25 or 26) hanging freely, push Kontrol-Karrier against the drum so that saddle will encircle the drum.
5. Drape the cinch chain (item 25 or 26) across the front of the drum and insert one link into the slot on the ratchet handle (item 36). Turn the ratchet handle clockwise to tighten the cinch chain around the drum (see detail).
6. Raise hoist and position the drum at the pouring station.
7. Pour the drum by pulling on the pull chain (item 4) and rotating the drum to a suitable pouring angle. For best control of drum pouring angle, pay out one side of the loop while pulling in the other side, thus being able to hold back the drum rotation after the load shifts.
8. After pouring is completed, rotate the drum back to vertical position and lower hoist to return drum to floor.
9. To remove drum: Pull ratchet handle to relieve pressure on ratchet teeth. Lift pawl handle (item 33) to release teeth engagement and rotate ratchet to loosen chain and allow its removal from notch.

**CAUTION:** DO NOT allow drum to impact on floor, ground, or dumping station, etc. or there may be damage.

**CAUTION:** DO NOT exceed weight capacity of 800 Lb. for FULL drum, 500 Lb. for HALF-FULL drum.

**C. MAINTENANCE:**

1. Lubricate gear teeth and roller chain.
2. Oil ratchet, pawl, saddle hinge and other moving parts periodically.
3. Periodically inspect all moving parts, framework, and contact areas for signs of wear, fatigue, or loosening. Tighten, adjust or replace parts as necessary to prevent failure and maintain proper function.

### Parts List for Morse 185M Series Serial # 0188 - 0407

ITEM #	SUFFIX, SEE NOTE 1	QTY.	PART #	DESCRIPTION
1*		1	1-P	CHAIN WHEEL #1-1/2 W/ GUIDE SR
2		1	3-P	TRIANGLE & SHAFT W/ BOLTS
3		12	2B-P	CHAIN, 1/0 BRASS, PER FT
4*		1	2435-P	CHAIN, PULL, BRASS, 1/0, 12'
5*		2	735-P	KEY, WOODRUFF, SIZE 9, ASA606
6*		1	19-P	BEARING, 3/4" ID X 2-1/2"
7		2	55-P	WASHER, 3/4 SAE FL 1-1/2 OD
8*		1	11-P	SPROCKET, #35 12T, 3/4" BORE
9		1	15-P	COLLAR, 3/4" ID
10*		1	7-P	BEARING, 3/4" ID X 1-1/2"
11		1	16-P	COLLAR, 1" ID
12*		1	18-P	BEARING, 1" ID X 2-1/2"
13*		1	12-P	CHAIN, ROLLER, #35 W/ M LINK
14*		1	795-P	LINK, MASTER, #35 CHAIN
15*		1	13-P	SPROCKET #35 36T, 3/4" BORE
16*		1	14-P	GEAR, PINION, 7 TOOTH
17		1	29-P	SPACER, SPUR GEAR .15"
18		2	22-P	SHCS, 3/8-24 X 5/8
19*		1	23-P	GEAR, SPUR, 72T, 1" HOLE
20		1	47M-P	OVERHEAD YOKE, 185M SERIES, SR
21**	A-M	1	725AM-P	SADDLE ASM, 285AM, SR
21**	B-M	1	112BM-P	SADDLE ASM, 185B-M, SR
21**	C-M	1	725CM-P	SADDLE ASM, 185CM, SR
21**	D-M	1	112DM-P	SADDLE ASM, 185D-M, SR
22				SADDLE WELDMENT (NOT SOLD SEPARATELY)
23		1	4079-P	HHCS, M8 X 60 MM CL8.8, 8MM
24		1	4081-P	NUT, M8 ESNA, 8MM
25	A-M, B-M	1	1287-P	CHAIN, CINCH, 3/16 SS 33 LK
26	C-M, D-M	1	E14SS	FIBRE DRUM STRAP, SS, SR
27		1	64-P	ROLL PIN, 3/16 X 1-1/4
29		1	1296-P	HHCS, 1/4-20 X 7-1/2 GR5
30		1	1297-P	NUT, 1/4-20 REV HEX LOCK
31		1	136-P	GRIP, HANDLE 7/8" X 4-3/4"
32*		1	169-P	SPRING, PAWL
33		1	168-P	PAWL, WITH DRILLED HOLE
34		1	170-P	SCREW, 3/8 DIA X 5/8 SHOULDER
35		1	710-P	RETAINER, RATCHET PUSH NUT 3/4
36		1	165-P	RATCHET, MALLEABLE, SADDLE
37		1	165KIT-P	KIT, RATCHET CHAIN TIGHTENER
38		1	731M-P	PLATE, RATCHET HINGE, 1/4", SR (NOT SOLD SEPARATELY)
39*		1	726M-P	HINGE PLATE CPT, 1/4" SR

\* Recommended spare parts

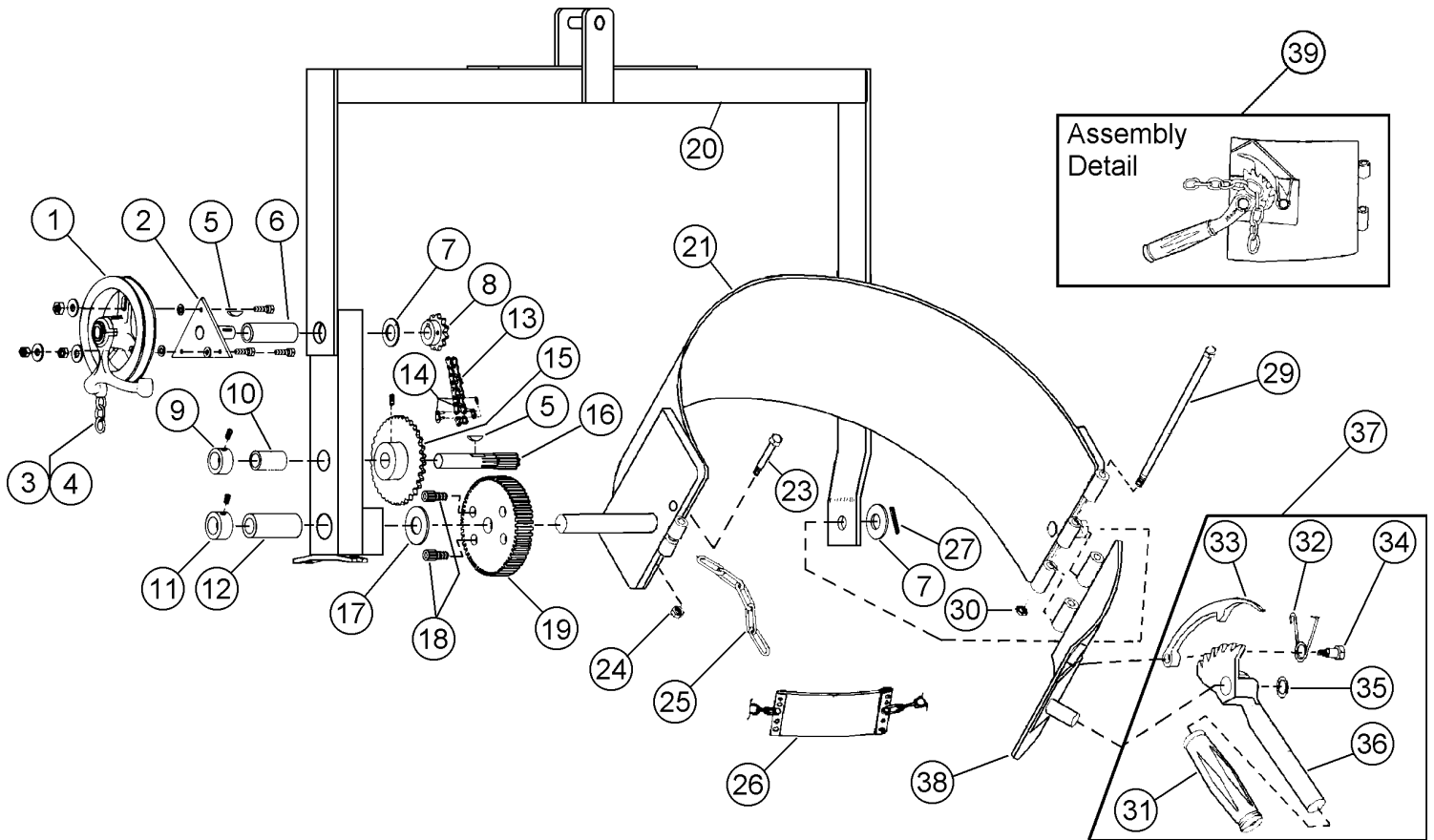
**Note #1:** If no letter is shown, the part is for Models 185A-M, 185B-M, 185C-M and 185D-M. If a letter is shown, the part is for the model with that letter suffix only.

\*\* Item 21 "SADDLE ASM" (drum holder assembly) includes the "SADDLE WELDMENT" and appropriate attached moving parts (items 23, 24, 25, 29, 30 and 39).

Item 25 has been discontinued and no longer available. Replace with p/n 1287kit-p (KIT, 9/32" SS CHAIN W/ RATCHET)

Item 26 has been discontinued and no longer available. Replace with p/n E14sskit-p (KIT, SS STRAP W/ RATCHET)

### Parts Diagram for Morse 185M Series Serial # 0188 - 0407



**When ordering parts, specify  
part number and description,  
model number and serial number.  
Find model number and serial number  
on metal tag attached to Kontrol-Karrier.**