

OPERATOR'S MANUAL FOR MORSE MODEL 185R KONTROL-KARRIER Serial Number 0202 to 1102 (MMYY)

A. IMPORTANT:

1. Review the Material Safety Data Sheet(s) for the material(s) in the drum(s) and take all necessary precautions. Safety shoes, work gloves, hardhat and other personal protective devices are recommended.
2. Please read all instructions *thoroughly* before attempting to operate your new MORSE drum handler.
3. The model 185R Kontrol-Karrier has a maximum capacity rating of 800 Lb. full drum and 500 Lb. half-full drum and is designed to lift, move and pour *drums that have a suitable top rim*. This drum handler will NOT lift a drum without a suitable top rim. **DO NOT** exceed these ratings. Exceeding these ratings or handling drums other than those mentioned above is unsafe and could result in equipment damage, excessive wear or awkward handling.
4. When loading, unloading, operating, or maintaining your MORSE drum handler, always use care and good judgment. Maintain secure footing and a firm hold. Keep hands and loose clothing away from all moving parts. Never allow anyone to be below any part of a raised drum handler or drum. Read operating instructions and review the pictures in the sales brochure before operation.
5. The model 185R is a "Group 1 - Structural and Mechanical" Below-the-Hook Lifting Device, which is covered by the American National Standard ANSI/ASME B30.20. The user should comply with all aspects of this standard.

B. ASSEMBLY INSTRUCTIONS:

1. Unit is shipped fully assembled.
2. Prior to initial use, inspect all moving parts and test rotation of drum holder. Inspect top rim clamp and screw for proper operation. Perform necessary load test, inspections, operator training, etc. as prescribed in the ANSI/ASME B30.20 standard.

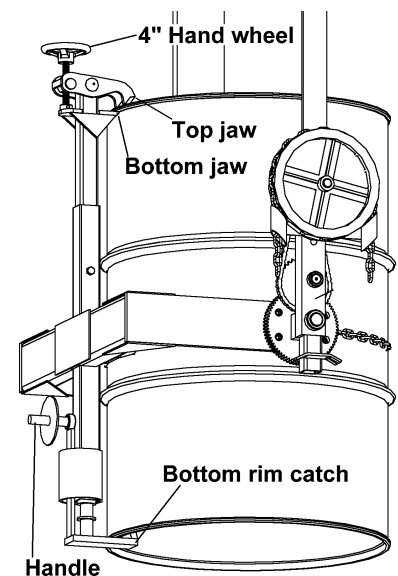
Caution: Before handling a drum ensure that it has a suitable top rim to grab.

Caution: Never tilt without first engaging the bottom rim hook on a steel drum or chain and load binder on a plastic or fiber drum.

Caution: Do not exceed weight capacity of 800 Lb. for FULL drum, 500 Lb. for HALF-FULL drum.

C. OPERATING INSTRUCTIONS:

1. Lower hoist and engage hoist hook into the lifting eye.
2. Open the top jaw by turning the 4" hand wheel counter clockwise until there is a sufficient opening to accept the top rim of the drum.
3. Raise hoist to lift the 185R clear of floor and position it at a height which aligns the bottom jaw of the top rim clamp with the bottom of the top rim on drum. Ensure that the bottom rim catch near the bottom of the drum is facing to the side, left or right, and not toward the drum.
4. Turn the 4" hand wheel clockwise until top jaw is pressing tightly against the top of the drum. The drum is now securely held by the top rim clamp and can be lifted but NOT tilted.
5. After ensuring that the rim clamp is secure on the drum rim, raise drum about 4" above the floor. For drums with a suitable bottom rim, i.e. a steel drum, push down on the handle for the bottom rim catch and turn the catch until it is under the drum. For a plastic or fibre drum, wrap the cinch chain around the belly of the drum and secure it with the load binder and snap hook.
6. The drum can now be tilted to pour (steel drums can also be set on racks in a horizontal position since they do not require the chain or load binder).



D. MAINTENANCE:

1. Inspect gears, sprockets and roller chains for wear and lubricate as needed.
2. Periodically inspect all moving parts, framework, hand wheel assembly, top rim clamp, bottom rim hook, and contact areas for signs of wear, fatigue, or loosening. Perform all inspections, load tests, and maintenance according to the ANSI/ASME B30.20 standard.

MORSE MODEL 185R KONTROL-KARRIER
Serial Number 0202 to 1102 (MMYY)

MORSE MODEL 185R KONTROL-KA

Overhead Assembly - Part Number :

Serial Number 0202 to 1102 (MMY

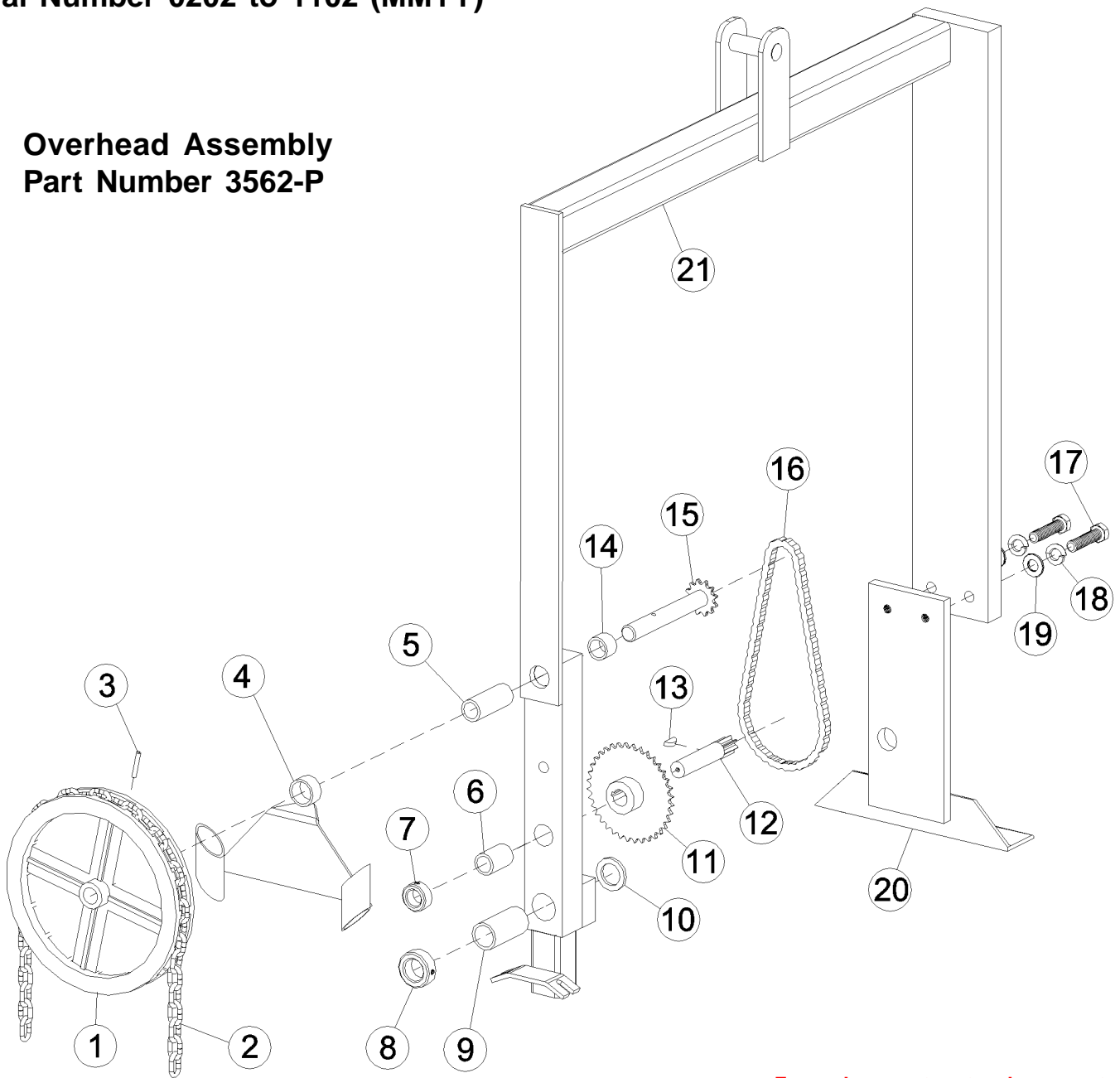
ITEM	QTY	P/N	DE
1	1	1303-P	POCKET CHAIN W
2	1	3-185-P	PULL CHAIN, POC
3	1	64-P	ROLL PIN, 3/16 X 1
4	1	1304-P	GUIDE, POCKET C
5	1	19-P	BEARING, 3/4" ID X
6	1	7-P	BEARING, 3/4" ID X
7	1	15-P	COLLAR, 3/4" ID
8	1	16-P	COLLAR, 1" ID
9	1	18-P	BEARING, 1" ID X 2
10	1	29-P	SPACER, SPUR GE
11	1	13-P	SPROCKET #35 36
12	1	14-P	GEAR, PINION, 7 T
13	1	735-P	KEY, WOODRUFF,
14	1	1411-P	SPACER, SHAFT W
15	1	1302-P	SHAFT W/ 12T SPF
16	1	12-P	CHAIN, ROLLER, #
17	2	1168-P	1/2 - 13 X 2 HHCS (
18	2	1644-P	WASHER, 1/2 SPLI
19	2	173-P	WASHER, 1/2 SAE
20	1	3564-P	IDLER WELD, BOL
21	1	3242-P	OVERHEAD WELD

MORSE MODEL 185R KONTROL-KARRIER

Serial Number 0202 to 1102 (MMYY)

Overhead Assembly

Part Number 3562-P



For replacement parts, please contact your Morse dealer.

When ordering parts, please specify:
- Part number and description,
- Model number
- Serial number

Find model number and serial number on metal name plate attached to frame.

MORSE MODEL 185R KONTROL-KARRIER
Serial Number 0202 to 1102 (MMYY)

MORSE MODEL 185R KONTROL-KA

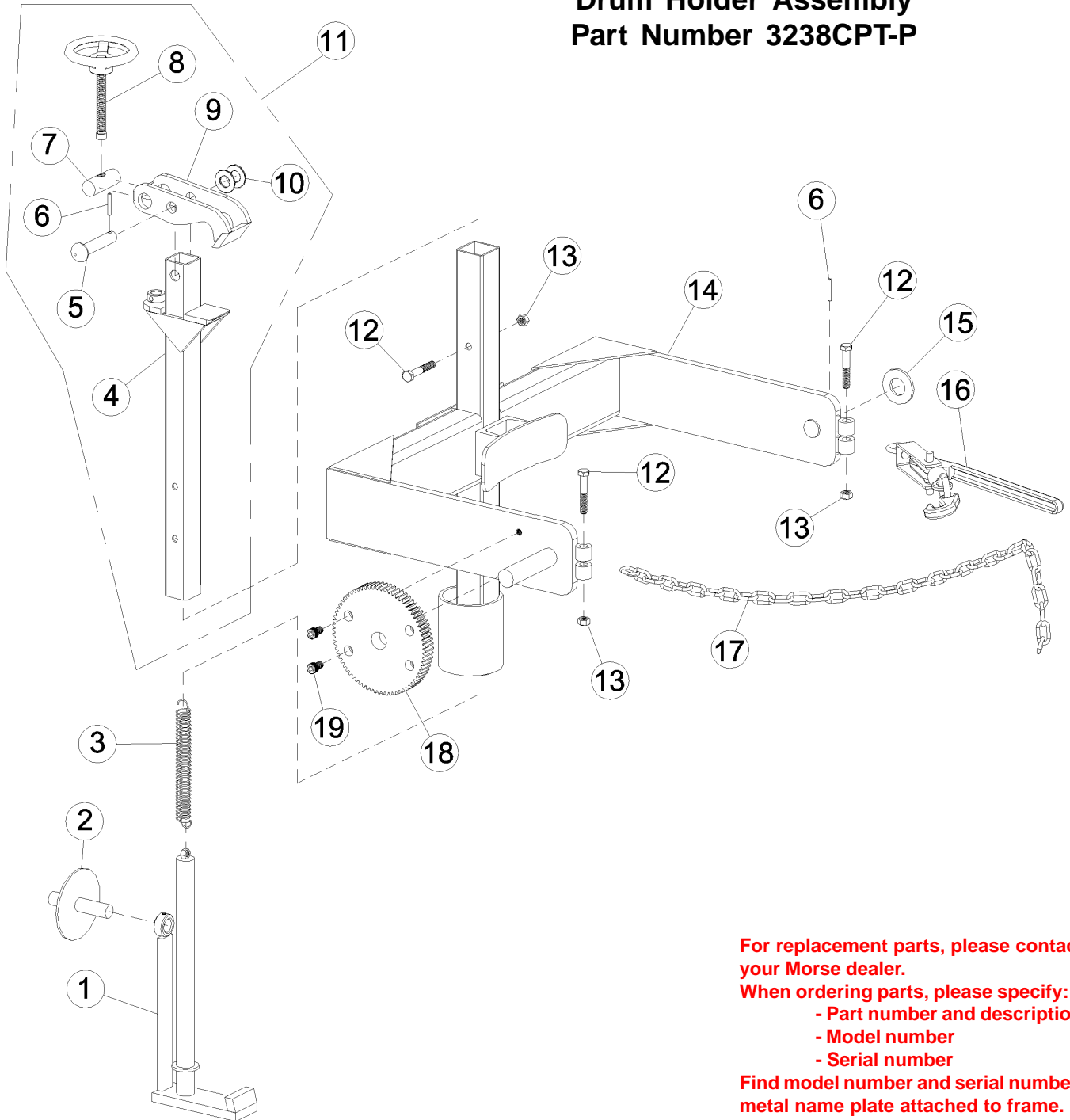
Drum Holder Assembly - Part Number 3

Serial Number 0202 to 1102 (MMY

ITEM	QTY	P/N	DE
1	1	3237-P	BOTTOM CATCH W
2	1	3236-P	HANDLE, BOTTOM
3	1	3225-P	SPRING, 7/8 OD X
4	1	3241-P	RIM CLAMP WELD,
5	1	138-P	CLEVIS PIN 5/8 X 3
6	2	64-P	ROLL PIN, 3/16 X 1
7	1	3510-P	THREADED BARRI
8	1	3616-P	HANDWHEEL ASM
9	1	3239-P	TOP JAW, RIM CLA
10	2	17-P	WASHER, 5/8 SAE
11	1	3540-P	RIM CLAMP ASM, S
12	3	82-P	3/8 - 16 X 2-1/4 HH
13	3	1169-P	3/8 - 16 REV HEX L
14	1	3238-P	SADDLE WELD, 18
15	1	1883-P	WASHER, 1" SAE F
16	1	3587-P	LOAD BINDER, LIN
17	1	180-P	CHAIN, CINCH, 3/1
18	1	23-P	GEAR, SPUR, 72T,
19	2	22-P	3/8 - 24 X 5/8" SHC

MORSE MODEL 185R KONTROL-KARRIER
Serial Number 0202 to 1102 (MMYY)

Drum Holder Assembly
Part Number 3238CPT-P



For replacement parts, please contact your Morse dealer.

When ordering parts, please specify:
- Part number and description,
- Model number
- Serial number

Find model number and serial number on metal name plate attached to frame.

LIMITED WARRANTY

MORSE DRUM HANDLING EQUIPMENT IS GUARANTEED AGAINST DEFECTS in workmanship or materials for 2 years when used properly within its rated capacity. Motors and other purchased parts carry the warranties of their manufacturers.

For warranty claims, contact Morse to obtain a return authorization number. Return freight must be prepaid. In all instances, liability is limited to the purchase price paid or to repairing or replacing the product. Customer assumes liability for any modifications, unauthorized repairs or parts substitution.