

Contents

	Page
Receiving Procedures.	1
Warranty.	1
Safety Information.	1 - 2
Machine Description.	3
Operating Instructions.	3
Maintenance.	3
Parts Lists and Diagrams.	4 - 5
Bottom Catch Spring Replacement.	6

Operator's Manual for Morse Kontrol-Karrier

Model 185R
Serial number 0911 to 0114 (MMYY)

Receiving Procedures

Every Morse drum handler is inspected prior to shipping. However, damage may be incurred during transit.

- Check for visible damage. If you choose to accept damaged freight, always sign noting the damage on the **Bill of Lading**.
- Document the damage and have the truck driver sign. We recommend keeping a digital camera at your receiving dock for this purpose.
- Open packages expeditiously to check the condition of the goods. There is only a 24 hour window to notify the carrier of any concealed damage.
- Immediately **report all damage to the shipping company!** Then you may contact Morse for assistance with your freight claim.
- Morse Manufacturing will not be held responsible for any damaged freight that is not signed for as damaged.

Limited 2 Year Warranty

Morse drum handling equipment is guaranteed against defects in workmanship or materials for two years when used properly within its rated capacity. Warranty does not cover wear from normal use or damage from accident or abuse. Motors and other purchased parts carry the warranties of their manufacturers.

For warranty claims, contact your Morse Dealer to obtain a return authorization number, and for return freight advice. Return freight must be prepaid.

In all instances, liability is limited to the purchase price paid or to repairing or replacing the product. Customer assumes liability for any modifications, unauthorized repairs or parts substitution.



Safety Information

While Morse Manufacturing Co. drum handling equipment is engineered for safety and efficiency, a high degree of responsibility must be placed upon the machine operator to follow safe practices, based primarily on common sense, upon which true safety depends.

Failure to follow the safety precautions in this manual can result in personal injury or property damage. Observe the same precautions as with similar machinery where carelessness in operating or maintenance is hazardous to personnel. Carefully read the safety precautions below and throughout this manual.

Review the Material Safety Data Sheet(s) for the material(s) in the drum(s) and take all necessary precautions. Safety shoes, work gloves, hard hat and other personal protective devices are recommended.

Prior to initial use, inspect all moving parts. Perform necessary load test, inspections, operator training, etc.

Operator's Manual for Morse Model 185R Kontrol-Karrier
Serial number 0911 to 0114 (MMYY)

Safety Information (continued)



DANGER - Indicates a situation which, if not avoided, will result in serious injury or death. This signal word is limited to the most extreme situations.



WARNING - Indicates a situation which, if not avoided, could result in serious injury or death.



CAUTION - Indicates a situation which, if not avoided, can result in damage to the machine.



WARNING - Kontrol-Karriers are designed to handle one drum of the types listed at the top of page 3. Machine Description. DO NOT attempt to handle any other type of drum or object.



WARNING - DO NOT exceed the weight capacity of 800 Lb. (363 kg).



WARNING - DO NOT operate damaged or malfunctioning unit, or a unit with missing parts.



WARNING - DO NOT lift people or suspend loads over people. Stay clear of suspended loads.



WARNING - DO NOT lift loads higher than necessary.



WARNING - DO NOT leave suspended loads unattended.



WARNING - DO NOT remove or obscure warning labels.



WARNING - DO NOT operate without first having read and understood operating manual.



WARNING - DO NOT make alterations or modify the unit. Under no circumstances should any modifications be made to the Morse machinery without factory authorization. Any modifications may void the warranty. This machine was designed to perform a specific job and alterations may result in injury to operator or machine.



WARNING - Wear safety shoes with non-slip soles and hard toe protection.



CAUTION: DO NOT allow drum to impact on floor, ground, etc.

Operator's Manual for Morse Model 185R Kontrol-Karrier Serial number 0911 to 0114 (MMYY)

Machine Description

Model 185R Kontrol-Karrier is designed to lift, transport and dispense a drum with a suitable top rim. It will not lift a drum without a suitable top rim. The drum can be up to 23.5" (59.7 cm) in diameter and must be at least 34" (86.4 cm) tall. This includes most 55-gallon (208 liter) steel, plastic and fiber drums. The maximum capacity is 800 Lb. (363 kg).



Options

- Option X01-185 Hand Crank with MORStop Tilt-Brake factory installed on new model 185R.
To replace standard chain wheel tilt control with this option in the field, order kit # 1460-P and kit # 3900-P.
- Option X02-185 Simple Hand Crank factory installed on new model 185R.
To replace standard chain wheel tilt control with this option in the field, order kit # 1460-P.
- Option X03-185 16" (40.6 cm) Diameter Hand Wheel factory installed on new model 185R.
To replace standard chain wheel tilt control with this option in the field, order Kit # 2690-P.

Important

1. Review the Material Safety Data Sheet(s) for the material(s) in the drum(s) and take all necessary precautions. Safety shoes, work gloves, hard hat and other personal protective devices are recommended.
2. Please read all instructions thoroughly before attempting to operate your new Morse drum handler.
3. The 185 Series Kontrol-Karriers have a maximum capacity rating of 800 Lb. (363 kg) for a FULL drum and 500 Lb. (227 kg) for a HALF-FULL drum, and are designed to lift and move a drum of the size and type noted above. DO NOT exceed this rating. Exceeding this rating or handling drums other than those mentioned above is unsafe and could result in equipment damage, excessive wear, awkward or dangerous handling.
4. When loading, unloading, operating, or maintaining your MORSE drum handler, always use care and good judgment. Maintain secure footing and a firm hold. Keep hands and loose clothing away from all moving parts. Never allow anyone to be below any part of a raised drum handler or drum. Read operating instructions and review the pictures in the sales brochure before operation.
5. The 185 Series are a "Group 1 structural and mechanical" below-the-hook lifting device which are covered by the American National Standard ASME B30.20. The user should comply with all aspects of this standard.



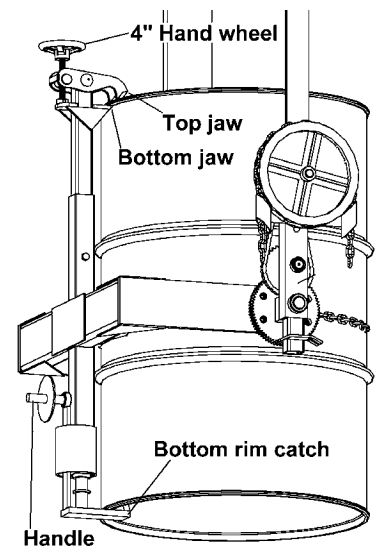
WARNING - Before handling a drum, ensure that it has a suitable top rim to grab.



WARNING - Never tilt without first engaging the bottom rim hook on a steel drum or chain and load binder on a plastic or fiber drum.

Operating Instructions

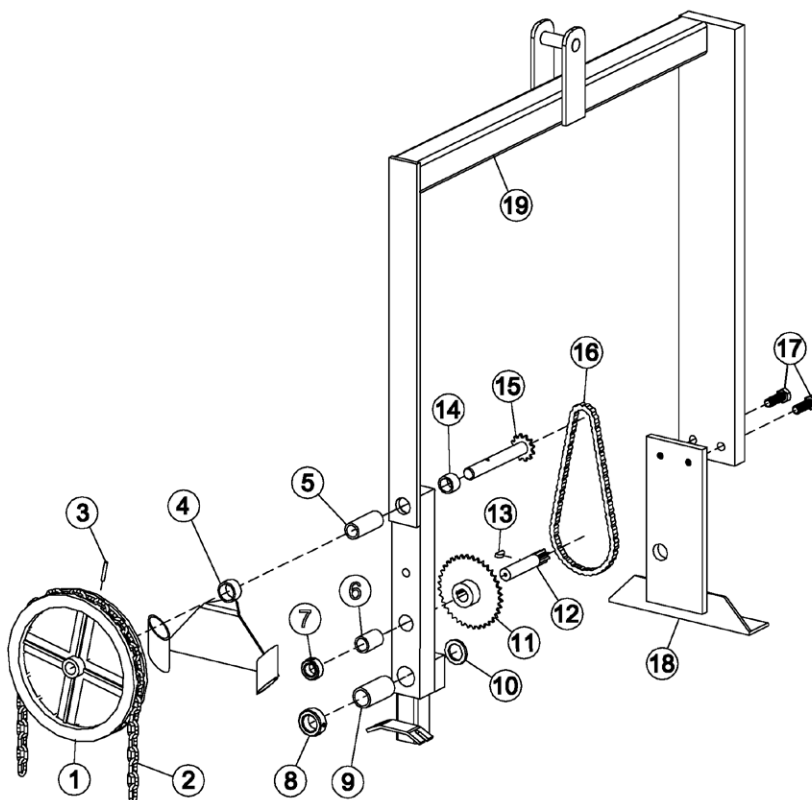
1. Start with Kontrol-Karrier on the floor. Lower hoist and engage hoist hook to lift Kontrol-Karrier.
2. Raise hoist to lift Kontrol-Karrier clear of floor and transport it to the drum.
3. Open the top jaw by turning the 4" hand wheel counter clockwise until there is a sufficient opening to accept the top rim of the drum.
4. Raise hoist to lift the 185R clear of floor and position it at a height which aligns the bottom jaw of the top rim clamp with the bottom of the top rim on drum. Ensure that the bottom rim catch near the bottom of the drum is facing to the side, left or right, and not toward the drum.
5. Turn the 4" hand wheel clockwise until top jaw is pressing tightly against the top of the drum. The drum is now securely held by the top rim clamp and can be lifted but NOT tilted.
6. After ensuring that the rim clamp is secure on the drum rim, raise drum about 4" (10 cm) above the floor. For drums with a suitable bottom rim, i.e. a steel drum, push down on the handle on the bottom rim catch and turn the catch until it is under the drum. For a plastic or fiber drum, which do not have a suitable bottom rim and cannot use the bottom rim catch, wrap the cinch chain around the belly of the drum and secure it with the load binder and snap hook.
7. The drum can now be tilted to pour (steel drums can also be set on racks in a horizontal position since they do not require the chain or load binder).
8. Raise hoist and position drum at pouring station.
9. Pour the drum by pulling on the pull chain (item 2) and rotating the drum to a suitable pouring angle. For best control of drum pouring angle, pay out one side of the chain loop while pulling in the other side, thus being able to hold back the drum rotation. The chain lock on the bottom of the power arm can be used to prevent drum rotation. To do so, criss cross the chain and insert in each slot of the chain lock. If the drum handler is equipped with the MORStop Tilt-Brake, there is no need to hold tension on both sides of the chain loop. Braking is immediate and self actuating, without additional steps by the operator. To add the MORStop Tilt-Brake to your drum handler, order part # 3900-P for a field installation kit.
10. After pouring is completed, rotate drum back to vertical position and lower hoist to return drum to floor.



Maintenance

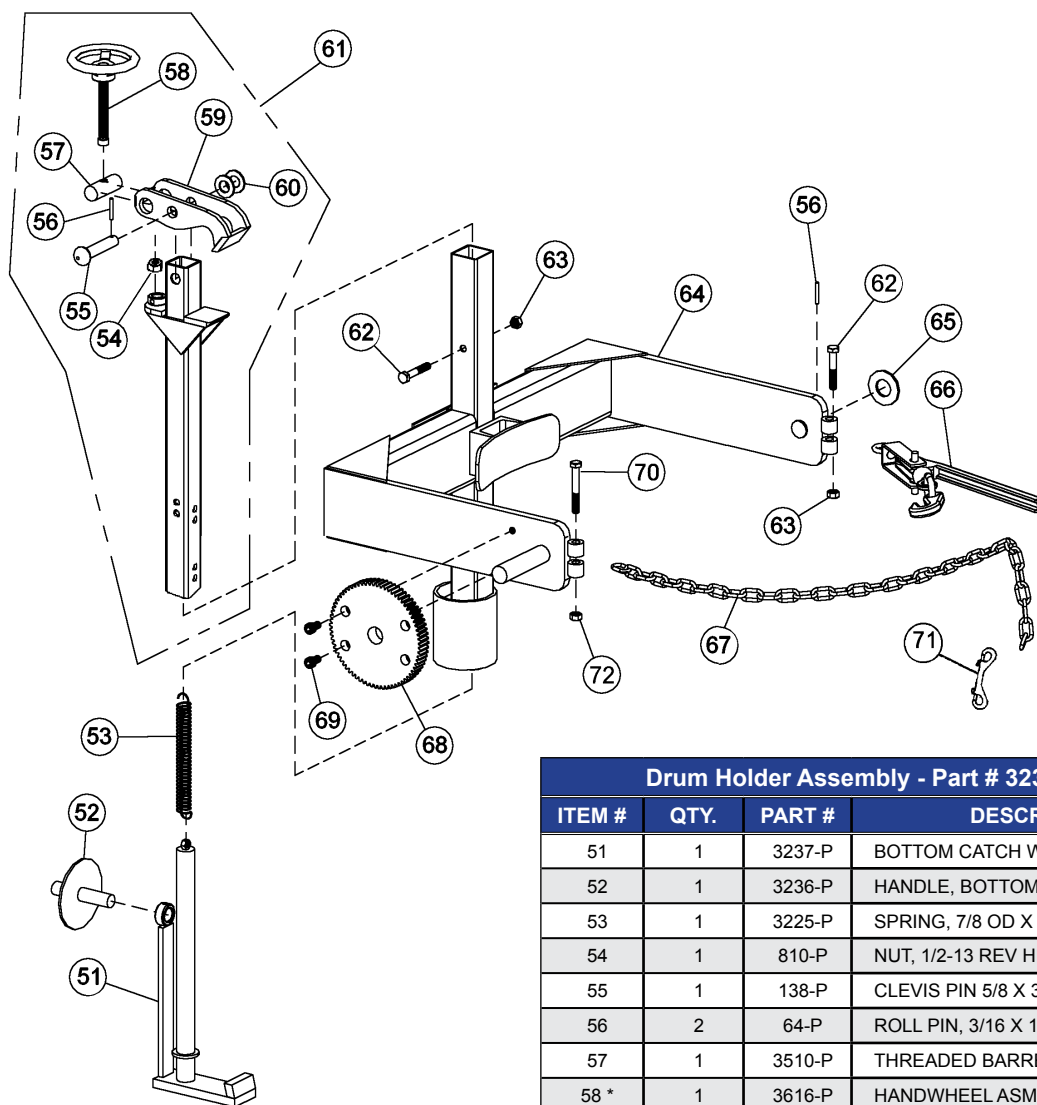
1. Lubricate gear teeth and roller chain.
2. Clean and oil moving parts periodically to maintain free action and reduce wear. Clean and lubricate more often in environment where dust, dirt or other foreign particulates will effect the performance of moving parts.
3. Periodically inspect all moving parts, framework, hand wheel assembly, top rim clamp, bottom rim catch and contact areas for signs of wear, fatigue or loosening. Tighten, adjust or replace parts as necessary to prevent failure and maintain proper function.
4. Worn or damaged parts must be properly replaced with the correct, genuine Morse parts.

Operator's Manual for Morse Model 185R Kontrol-Karrier
Serial number 0911 to 0114 (MMYY)



Overhead Assembly - Part # 3562-P			
ITEM #	QTY.	PART #	DESCRIPTION
1 *	1	1303-P	POCKET CHAIN WHEEL, 3/4 BORE
2 *	1	3-185-P	CHAIN, PULL, POCKET 12' LENGTH
3	1	64-P	ROLL PIN, 3/16 X 1-1/4
4	1	1304-P	GUIDE, POCKET CHAIN WHEEL
5 *	1	19-P	BEARING, 3/4" ID X 2-1/2"
6 *	1	7-P	BEARING, 3/4" ID X 1-1/2"
7	1	15-P	COLLAR, 3/4" ID
8	1	16-P	COLLAR, 1" ID
9 *	1	18-P	BEARING, 1" ID X 2-1/2"
10	1	29-P	SPACER, SPUR GEAR .15"
11 *	1	13-P	SPROCKET #35 36T, 3/4" BORE
12 *	1	14-P	GEAR, PINION, 7 TOOTH
13 *	1	735-P	KEY, WOODRUFF, SIZE 9, ASA606
14	1	1411-P	SPACER, SHAFT W/ 12T SPROCKET
15 *	1	1302-P	SHAFT W/ 12T SPROCKET, POCKET
16 *	1	12-P	CHAIN, ROLLER, #35 W/ M LINK
17	2	2172-P	HHCS, 1/2-13 X 1-1/2 GR5
18	1	3564-P	IDLER WELD, BOLT ON, 185R
19	1	3242-P	OVERHEAD WELD, 185R
20	1	4062-P	KIT, POLY COVER, 185, 285, 400 (NOT SHOWN)
* Recommended spare parts			

Operator's Manual for Morse Model 185R Kontrol-Karrier
Serial number 0911 to 0114 (MMYY)



Drum Holder Assembly - Part # 3238CPT-P

ITEM #	QTY.	PART #	DESCRIPTION
51	1	3237-P	BOTTOM CATCH WELD, 185R
52	1	3236-P	HANDLE, BOTTOM CATCH, 185R
53	1	3225-P	SPRING, 7/8 OD X 6", 185R
54	1	810-P	NUT, 1/2-13 REV HEX LOCK
55	1	138-P	CLEVIS PIN 5/8 X 3"
56	2	64-P	ROLL PIN, 3/16 X 1-1/4
57	1	3510-P	THREADED BARREL, RIM CLAMP
58 *	1	3616-P	HANDWHEEL ASM, 4", 3540-P 185R
59	1	3239-P	TOP JAW, RIM CLAMP, WELD
60	2	17-P	WASHER, 5/8 SAE FL 1-5/16 OD
61	1	4560-P	KIT, RIM CLAMP, MORCINCH
62	2	1315-P	HHCS, 3/8-16 X 2-3/4 GR2
63	2	1169-P	NUT, 3/8-16 REV HEX LOCK
64	1	3238-P	SADDLE WELD, 185R
65	1	1883-P	WASHER, 1" SAE FL 2" OD
66	1	3587-P	LOAD BINDER, LINK CUT OFF, 185R
67 *	1	5017-P	CHAIN, CINCH, 9/32, 38 LINK
68 *	1	23-P	GEAR, SPUR, 72T, 1" HOLE
69	2	22-P	SHCS, 3/8-24 X 5/8
70	1	4079-P	HHCS, M8 X 60 MM CL8.8, 8MM
71	1	575-P	SNAP HOOK, GR, 300
72	1	4081-P	NUT, M8 ESNA, 8MM

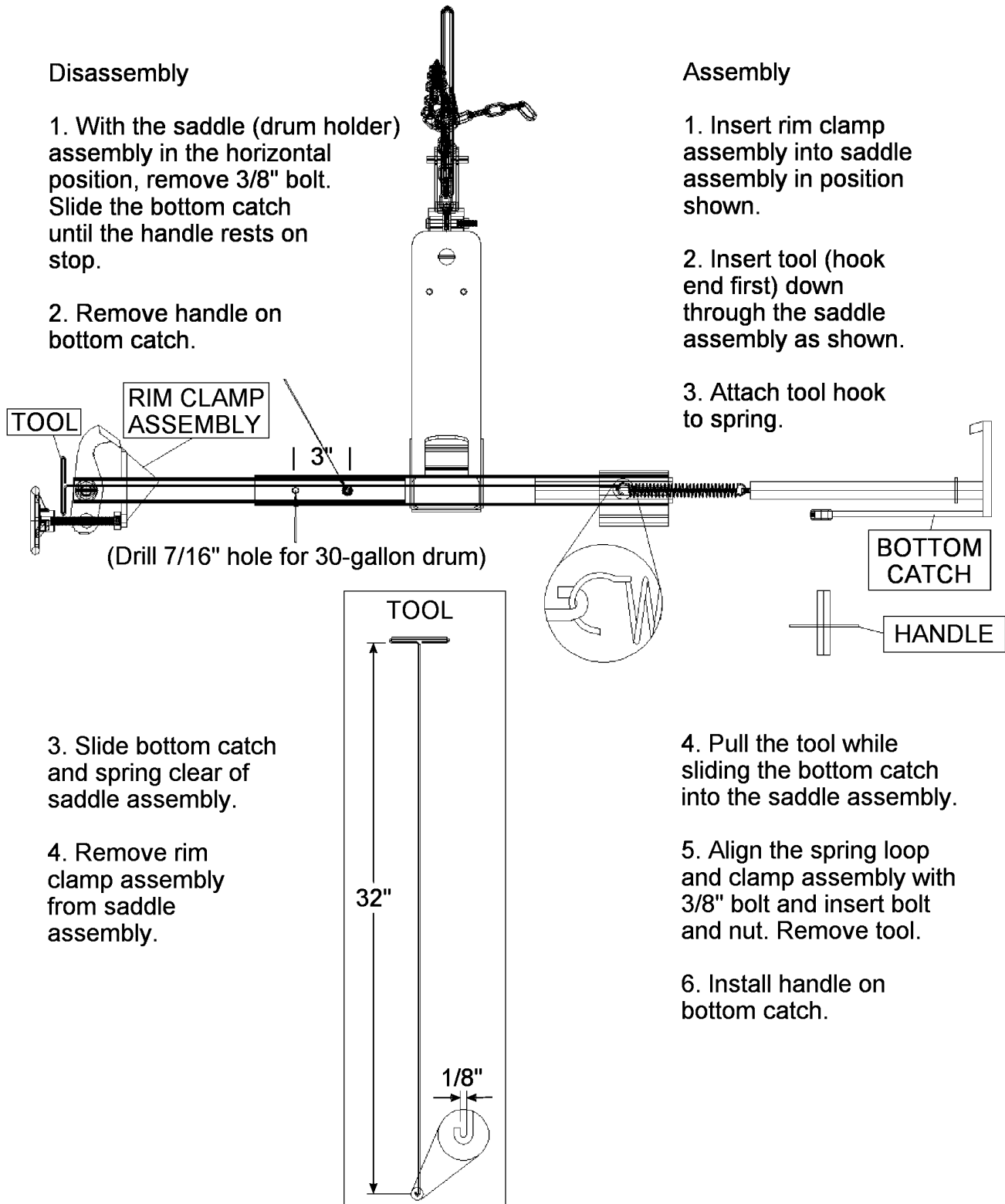
* Recommended spare parts

Operator's Manual for Morse Model 185R Kontrol-Karrier
Serial number 0911 to 0114 (MMYY)

Instructions for Bottom Catch Spring Replacement

Disassembly

1. With the saddle (drum holder) assembly in the horizontal position, remove 3/8" bolt. Slide the bottom catch until the handle rests on stop.
2. Remove handle on bottom catch.



Assembly

1. Insert rim clamp assembly into saddle assembly in position shown.
2. Insert tool (hook end first) down through the saddle assembly as shown.
3. Attach tool hook to spring.
4. Pull the tool while sliding the bottom catch into the saddle assembly.
5. Align the spring loop and clamp assembly with 3/8" bolt and insert bolt and nut. Remove tool.
6. Install handle on bottom catch.