

**OPERATOR'S MANUAL FOR**  
**2-5154 OR 2-5154VS SERIES STATIONARY DRUM ROTATOR**  
**Serial Number 12501 to 174637**

**INSTALLATION AND ADJUSTMENTS**

Overhead lifting equipment and the Morse #41 Drum lifting hook provide an effective loading system for horizontal drums.

Anchor to the floor with four mounting lugs.

Do *not* put into service without proper motor protection and controls. Electrical control packages are available at your Morse dealer.

The idler assembly plate may be adjusted to allow drive shaft spacing from 8" to 18".

The plate is preset to the second (outer) set of holes for use with standard 55 gallon steel drums. (See parts diagram)

**Morse Rotators do not comply with OSHA unless they are installed in accordance with OSHA subpart O, 1910.212 - "General requirements for all machines."**

**LOAD CAPACITY AND SPEEDS**

Capacity for liquid loads in drums is 1,000 lbs. (454 kg). Dry load capacity varies with speed of drum rotation: 400lbs.(181 kg) at 10RPM; 300lbs.(136 kg) at 20RPM; 250lbs.(113 kg) at 30RPM; or 200lbs.(91 kg) at 40RPM. Drum speed was set at the factory according to customer's order specification. Drum speed for VS models is variable, controlled by hand adjustment during use. Please refer to instructions for variable speed control provided.

Operation with over capacity load will tend to overload motor and shorten service life of transmission components.

**OPTIONAL : 1-5 GALLON IDLER ATTACHMENT (P/N 1-5-1)**

Accommodates 1 to 5 gallon (3.8-19L) cylindrical cans up to 19" (48 cm) long. Quickly removed to allow rolling drums. Drive wheels can be repositioned to drive the cans. Collars on idler roller provide a means for containing the can end to end and should be set far enough apart so that the can rolls between them.

**LUBRICATION INSTRUCTIONS**

Idler wheels and drive bearings are equipped with grease fitting and should be lubricated periodically. High pressure grease guns are not recommended, as their force may damage seals.

The speed reducer has been filled and tested prior to shipment. After operating a new machine for 50 hours, the housing should be thoroughly flushed out and new oil added to fill the housing to the oil level plug. The oil should be changed every 6 months or 5000 operating hours thereafter or more often if operating conditions cause condensation of moisture resulting in sludge formation inside housing.

Variable speed control should be serviced according to manufacturer's instructions. Motors have permanently lubricated ball bearings.

**PARTS LIST FOR MORSE 2-5154 OR 2-5154VS SERIES ROTATOR**

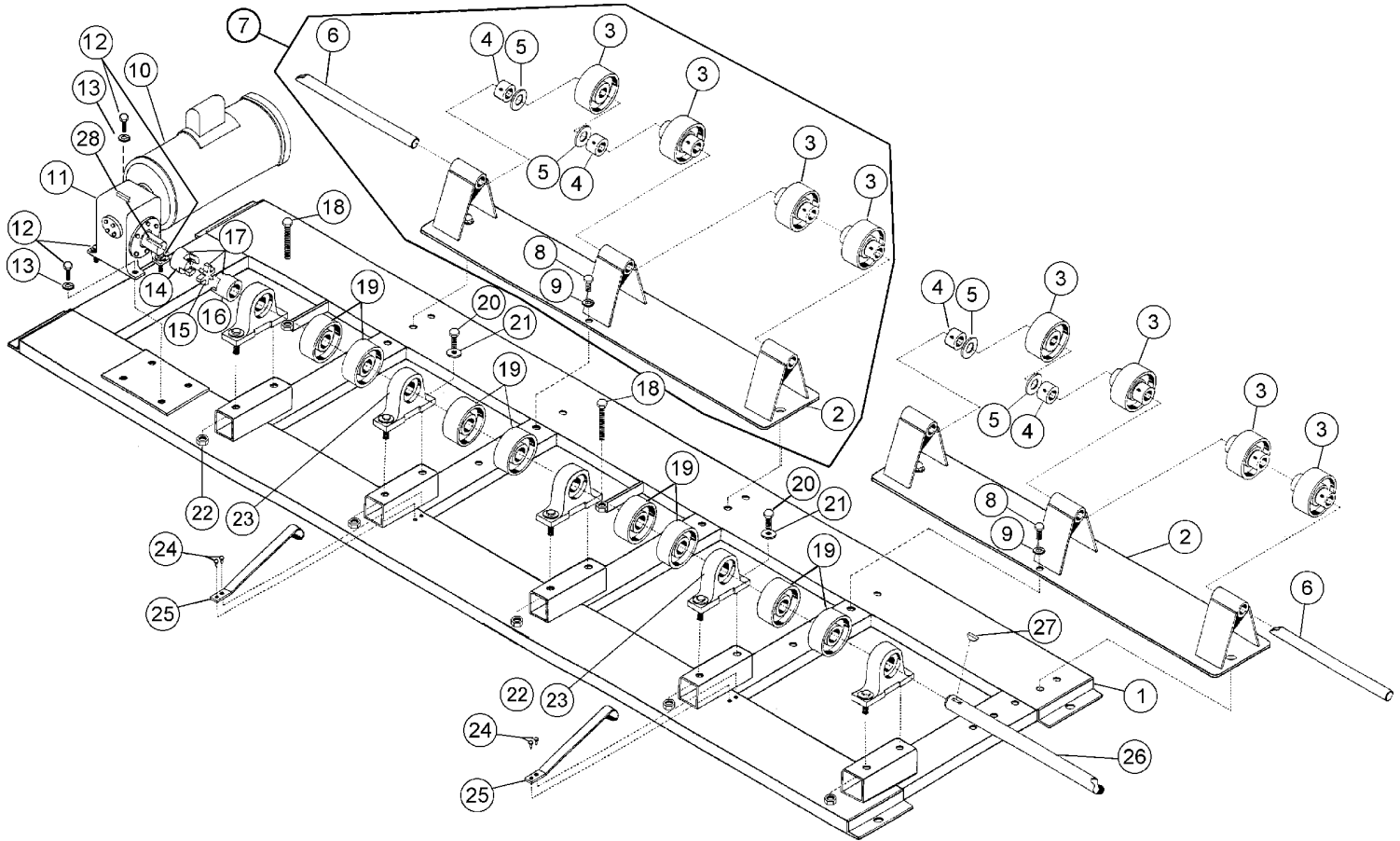
**Serial Number 12501 to 174637**

| ITEM | * MODEL      | MODEL SUFFIX | QTY | P/N        | DESCRIPTION                    |
|------|--------------|--------------|-----|------------|--------------------------------|
| 1    | 2-5154       |              | 1   | 1818-P     | FRAME WELDMENT, 2-5154         |
| 1    | 2-5154       | 10 RPM       | 1   | 1818/10-P  | FRAME WELDMENT, 2-5154/10      |
| 1    | 2-5154VS     |              | 1   | 1819-P     | FRAME WELDMENT, 2-5154VS       |
| 2    |              |              | 2   | 295-P      | IDLER PLATE WELDMENT, 5154     |
| 3    |              |              | 8   | 292-P      | WHEEL, IDLER, 6" W/ 3/4" BRG   |
| 4    |              |              | 16  | 15-P       | COLLAR, 3/4" ID                |
| 5    |              |              | 16  | 55-P       | WASHER, 3/4 SAE FL 1-1/2 OD    |
| 6    |              |              | 2   | 301-P      | IDLER SHAFT, 3/4" X 38" 5154   |
| 7    |              |              | 2   | 295CPT-P   | IDLER PLATE CPT, 1-5154        |
| 8    |              |              | 6   | 1657-P     | 3/8 - 16 X 3/4 HHCS GR 2 STL   |
| 9    |              |              | 6   | 1474-P     | WASHER, 3/8 SPLIT LOCK         |
| 10   |              | -1           | 1   | 290-1-2P   | MOTOR, 1HP, 1PH, 56C, TEFC     |
| 10   |              | -3           | 1   | 290-3-2P   | MOTOR, 1HP, 3PH, 56C, TEFC     |
| 10   |              | -E1          | 1   | 290-E1-2P  | MOTOR, 1HP, 1PH, 56C, EXP      |
| 10   |              | -E3          | 1   | 290-E3-2P  | MOTOR, 1HP, 3PH, 56C, EXP      |
| 10   |              | -A           | 1   | 290-A-2P   | MOTOR, AIR 2HP, 56C            |
| 11   | 2-5154       | 10 RPM       | 1   | 302-2-10-P | ** SPEED REDUCER 2-5154 40:1   |
| 11   | 2-5154       | 20 RPM       | 1   | 302-P      | ** SPEED REDUCER 5154 20:1     |
| 11   | 2-5154 OR VS | 30 RPM OR VS | 1   | 302-30-P   | ** SPEED REDUCER 5154 15:1 VS  |
| 11   | 2-5154       | 40 RPM       | 1   | 302-40-P   | ** SPEED REDUCER 5154 10:1     |
| 12   |              |              | 4   | 35-P       | 5/16 - 18 X 1 HHCS GR 2        |
| 13   |              |              | 4   | 1650-P     | WASHER, 5/16 SPLIT LOCK        |
| 14   |              |              | 1   | 1666-P     | COUPLING BODY HALF, 7/8" BORE  |
| 15   |              |              | 1   | 305-P      | SPIDER, BUNAN, 5154            |
| 16   |              |              | 1   | 1665-P     | COUPLING BODY HALF, 1" BORE    |
| 17   |              |              | 1   | 304-P      | COUPLING CPT, 1" TO 7/8"       |
| 18   |              |              | 1   | 1315-P     | 3/8 - 16 X 2-3/4 HHCS GR 2 STL |
| 19   |              |              | 8   | 291-P      | WHEEL, DRIVE, 6", 1" BORE      |
| 20   |              |              | 10  | 1464-P     | 3/8 - 16 X 1-1/4 HHCS GR 2 STL |
| 21   |              |              | 10  | 1166-P     | WASHER, 3/8 USS 1" OD          |
| 22   |              |              | 10  | 1169-P     | 3/8 - 16 REV HEX LOC NUT       |
| 23   |              |              | 5   | 297-P      | BEARING, 1" PILLOW BLOCK       |
| 24   |              |              | 4   | 213-P      | DRIVE SCREW, #7 X 5/16"        |
| 25   |              |              | 2   | 217-P      | GROUNDING STRAP, 5154, 201     |
| 26   |              |              | 1   | 299-2P     | DRIVE SHAFT, 1" X 79", 2-5154  |
| 27   |              |              | 1   | 736-P      | KEY, WOODRUFF, SIZE 15, ASA808 |
| 28   |              |              | 1   | 1326-P     | KEY, SQUARE, 3/16 X 1"         |
| 29   | 2-5154VS     |              | 1   | 306-P      | VARIABLE SPEED DRIVE           |

\* UNLESS OTHERWISE SPECIFIED, PARTS ARE FOR BOTH 2-5154 & 2-5154VS

\*\* DISCONTINUED AND NO LONGER AVAILABLE. CONTACT FACTORY FOR RECOMMENDED REPLACEMENT.

**PARTS DIAGRAM FOR**  
**2-5154 OR 2-5154VS SERIES STATIONARY DRUM ROTATOR**  
Serial Number 12501 to 174637



For replacement parts, please contact your Morse dealer.

When ordering parts, please specify:  
- Part number and description,  
- Model number  
- Serial number

Find model number and serial number on metal name plate attached to frame.

