

CONTENTS

	Page
Parts List and Diagram.	1
Installation Instructions.	1
Operating Instructions.	2
Assembly Instructions for Replacement Parts.	3

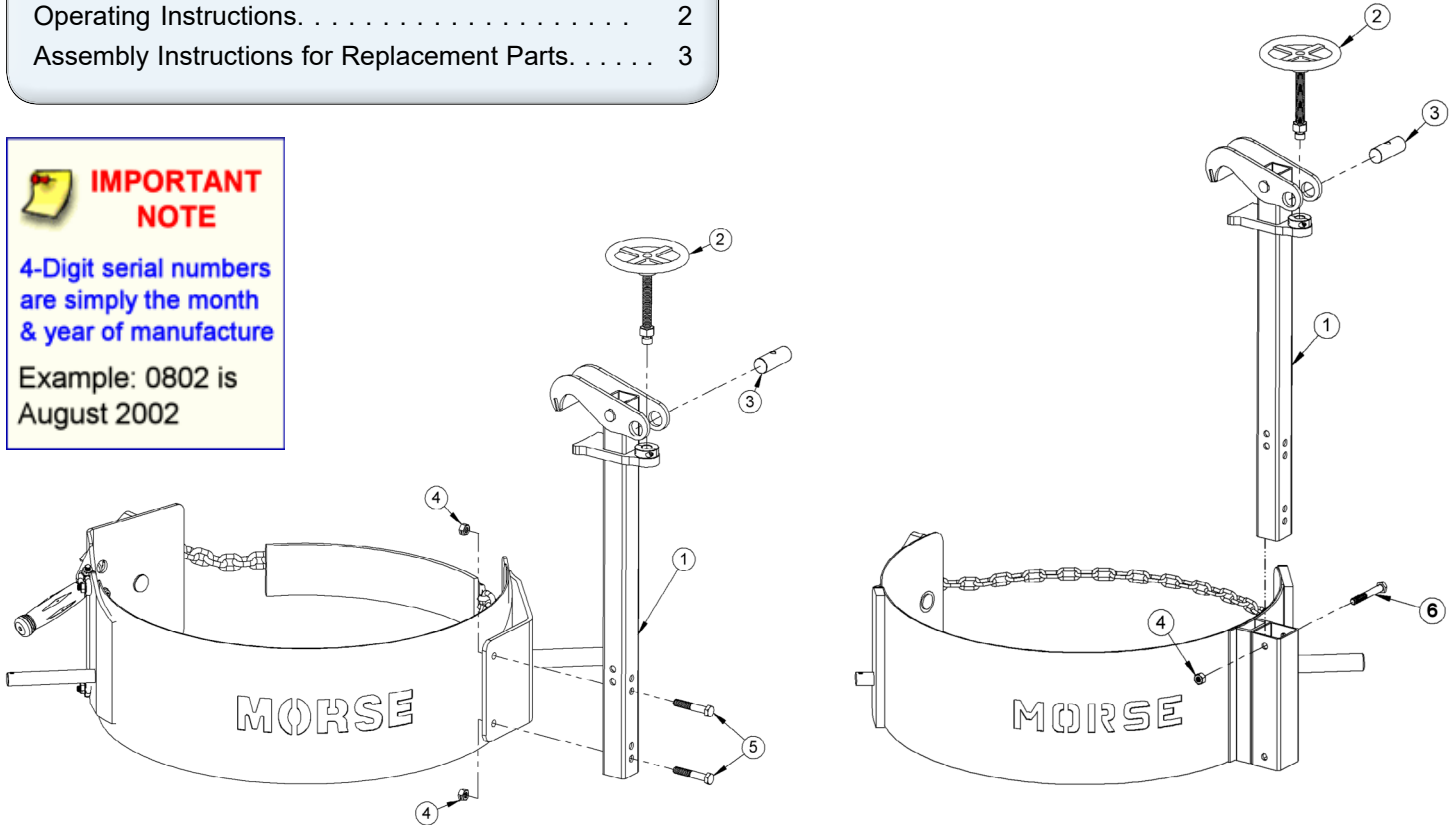
Operator's Manual for Morse Rim Clamp Assembly Kit

Kit # 4560-P
Serial number 0615 to 0721 (MMYY)



IMPORTANT NOTE

4-Digit serial numbers are simply the month & year of manufacture
Example: 0802 is August 2002



INSTALLATION INSTRUCTIONS for MORCINCH™ Drum Holder

1. Position Rim Clamp Assembly (item 1) on drum holder bracket with holes aligned.
2. Bolt in place using 2 bolts (item 5) and 2 nuts (item 4).

INSTALLATION INSTRUCTIONS for Drum Holder with Socket Tube

1. Slide Rim Clamp Assembly (item 1) down through socket tube, and line up top holes in Rim Clamp Assembly with top holes of socket tube.
2. Use bolt (item 6) and nut (item 4) to bolt in place through the top holes of the socket tube and the Rim Clamp Assembly.

ITEM	QTY	Kit #	DESCRIPTION
1	1	5806-P	WELD, RIM CLAMP
2	1	3616-P	HANDWHEEL ASM, 4", 3540-P 185R
3	1	3510-P	THREADED BARREL, RIM CLAMP
4	2	1169-P	NUT, 3/8-16 REV HEX LOCK
5	2	82-P	HHCS, 3/8-16 X 2-1/4 GR2
6	1	1315-P	HHCS, 3/8-16 X 2-3/4 GR2



morsedrum.com



service@morsedrum.com



(315) 437-8475



103 Kuhn Rd.
Syracuse, NY, 13208 U.S.A.

Operator's Manual for Morse Rim Clamp Assembly Kit - Part # 4560-P
Serial Number 0615 to 0721 (MMYY)

OPERATING INSTRUCTIONS

TO SECURE DRUM:

1. Turn hand wheel (item 2) counter clockwise to open top jaw.
2. Position drum holder assembly with bottom jaw of rim clamp directly under top rim of drum.
3. Turn hand wheel clockwise until top jaw is pressing tightly against top of drum (see Figure 1).
4. Secure drum with chain and ratchet mechanism. Drum is now ready to be lifted and tilted.

TO RELEASE DRUM:

1. Lower drum to floor in an upright position.
2. Release chain from ratchet mechanism by applying pressure to ratchet handle in a clockwise direction with one hand and opening pawl to free ratchet with other hand. Remove chain link from ratchet.
3. Open rim clamp by turning hand wheel counter clockwise.

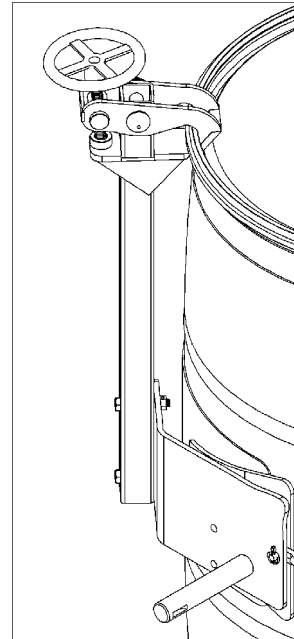


Figure 1
Plastic drum being lifted with
Rim Clamp Assembly Kit
installed.

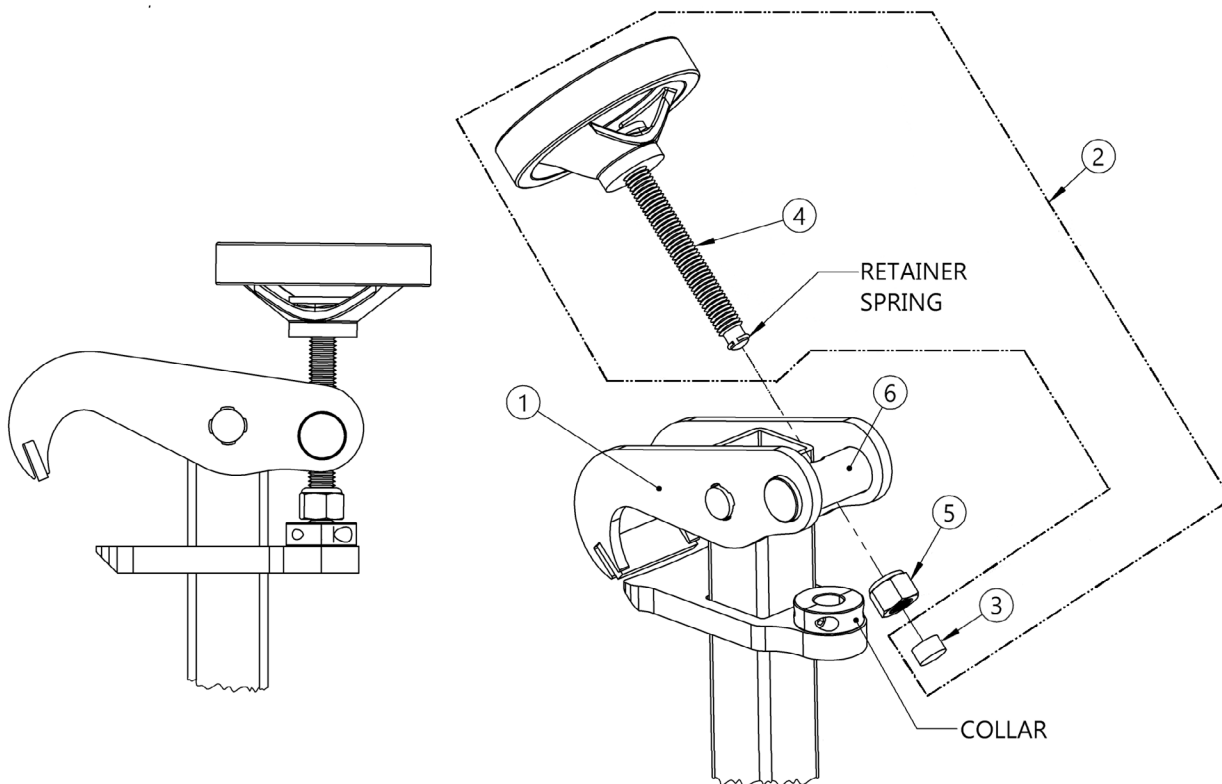


WARNING: This product can expose you to chemicals including barium sulfate, cobalt, titanium dioxide, and 2-methylimidazole, which are known to the State of California to cause cancer, and bisphenol-A, which is known to the State of California to cause birth defects or other reproductive harm.
For more information go to www.P65Warnings.ca.gov

Operator's Manual for Morse Rim Clamp Assembly Kit - Part # 4560-P
Serial Number 0615 to 0721 (MMYY)

4560-P HANDWHEEL ASSEMBLY INSTRUCTIONS

1. REMOVE SEAT (ITEM 3) FROM SCREW ASSEMBLY (ITEM 4)
2. THREAD SCREW ASSEMBLY (ITEM 4) INTO THREADED BARREL (ITEM 6)
3. THREAD NUT (ITEM 5) ONTO SCREW ASSEMBLY (ITEM 4)
 - NUT SHOULD BE ABOUT 1/2" FROM THE END OF SCREW ASSEMBLY (ITEM 4)
4. PRESS SEAT (ITEM 3) OVER RETAINER SPRING ON SCREW ASSEMBLY (ITEM 4)
5. WITH COLLAR SCREWS LOOSENED, INSERT SEAT (ITEM 3) INTO COLLAR, THEN TIGHTEN SCREWS



ITEM NO.	PART NUMBER	DESCRIPTION	QTY.
1	5806-P	WELD, RIM CLAMP	1
2	3616-P	HANDWHEEL ASM, 4", 3540-P 185R	1
3	NOT SOLD SEPARATELY	SEAT, 3509-P SCREW ASM	1
4	NOT SOLD SEPARATELY	SCREW, 3509-P SCREW ASM	1
5	6266-P	NUT, 1/2-13 NYLON LOCK	1
6	3510-P	THREADED BARREL, RIM CLAMP	1