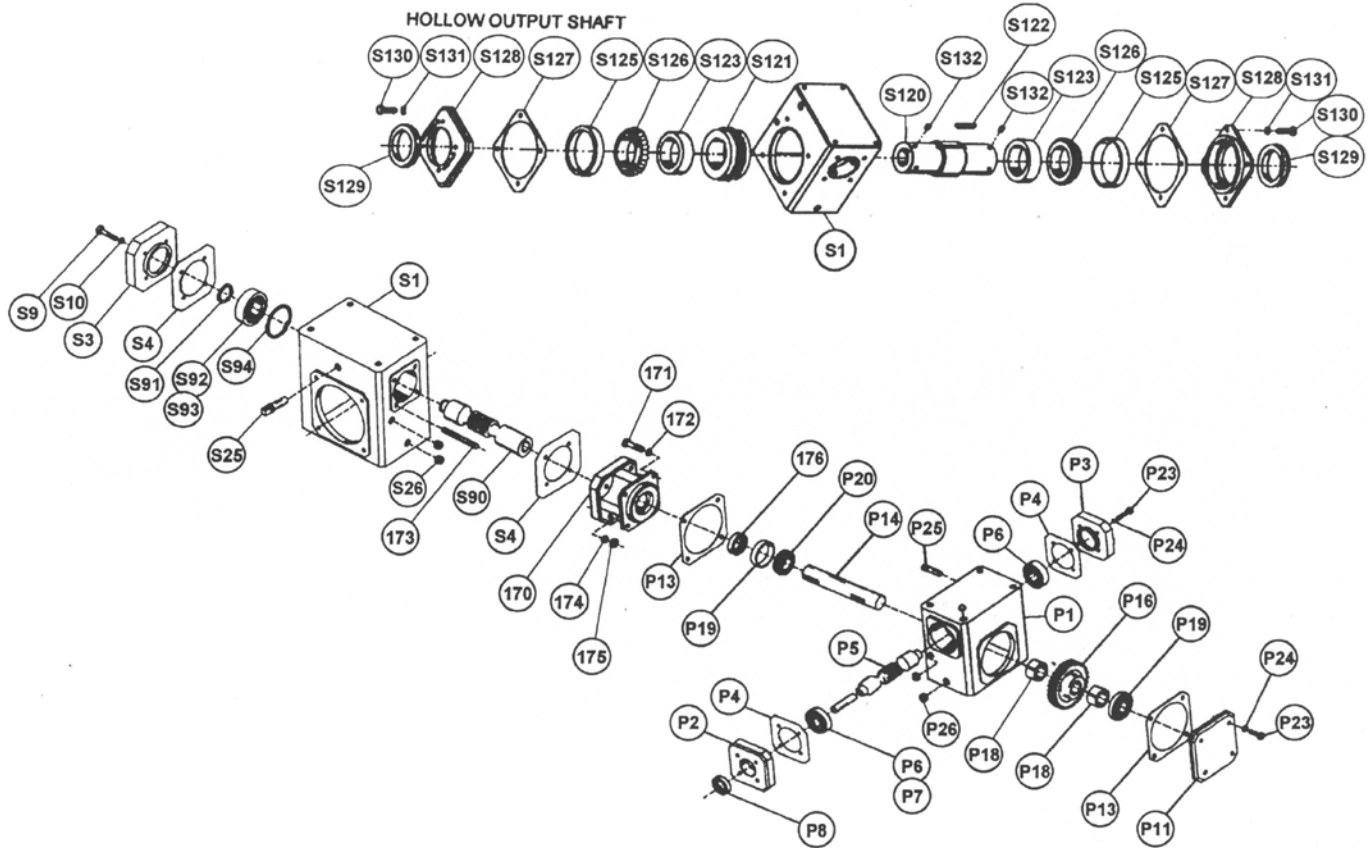


Parts List and Diagram for Morse Part # 603-P 2-Stage Speed Reducer from Grove  
Used on Morse Models 285A-GR and 285G-GR with Serial number 0000 to 0698 (MMYY)



ITEM	QTY.	PART #	DESCRIPTION
P1	1	29000D-P	HOUSING, PRIMARY, 603-P
P2	1	48003B-P	INPUT SEAL COVER, 603-P
P3	1	48002B-P	INPUT BEARING COVER, 603-P
P4	1	14938-P	INPUT GASKET KIT, 603-P
P5	1	36020B-P	INPUT SHAFT, 5:1, 603-P
P6/P7	2	40257-P	INPUT BEARING CUP/ CONE, 603-P
P8	1	40188-P	INPUT OIL SEAL, 603-P
P11	1	48001B-P	OUTPUT SEAL COVER, 603-P
P13	1	14940-P	OUTPUT GASKET KIT, PRI, 603-P
P14/P16	1	12476B-P	OUTPUT SHAFT/ GEAR ASM, 603-P
P18	2	41526A-P	SPACER, 603-P
P19	2	40832-P	OUTPUT BEARING CUP, 603-P
P20	2	40831-P	OUTPUT BEARING CONE, 603-P
P25	1	41524A-P	VENT PLUG, 603-P
P26	3	40411-P	PIPE PLUG, 603-P
170-178	1	12283-P	DOUBLE REDUCTION KIT, 603-P
S1	1	29009D-P	HOUSING, SECONDARY, 603-P
S3	1	48033B-P	INPUT BEARING COVER, 603-P
S4	1	14945-P	INPUT GASKET KIT, 603-P

ITEM	QTY.	PART #	DESCRIPTION
S25	1	41524A-P	VENT PLUG, 603-P
S26	3	40411-P	PIPE PLUG, 603-P
S90	1	1756-P	INPUT SHAFT, 30:1, 603-P
S91	1	94005-P	BEARING RETAINER RING, 603-P
S92	2	90004-P	INPUT BEARING CUP, 603-P
S93	2	90005-P	INPUT BEARING CONE, 603-P
S94	1	94003-P	SNAP RING, 603-P
S120	1	37257C-P	HOLLOW OUTPUT SHAFT, 603-P
S121	1	25095B-P	HOLLOW WORM GEAR, 30:1, 603-P
S122	1	92085-P	WORM GEAR KEY, 603-P
S123	AS REQ'D	20723A-P	GEAR SPACER, 603-P
S125	2	90029-P	OUTPUT BEARING CUP, 603-P
S126	2	90030-P	OUTPUT BEARING CONE, 603-P
S127	AS REQ'D	14947-P	OUTPUT GASKET KIT, SEC, 603-P
S128	2	28034C-P	OUTPUT COVER, 603-P
S129	2	93002-P	OUTPUT OIL SEAL, 603-P
S130	AS REQ'D	91008-P	HEX HEAD CAP SCREW, 603-P
S131	AS REQ'D	40236-P	LOCK WASHER, 603-P
S132	6	40521-P	SET SCREW, 603-P

MORSE Mfg. Co., Inc. • 727 West Manlius Street • P.O. Box 518 • East Syracuse, NY 13057-0518  
 Phone: (315) 437-8475 • Fax: (315) 437-1029 • Email: [service@MorseDrum.com](mailto:service@MorseDrum.com) • Website: [MorseDrum.com](http://MorseDrum.com)