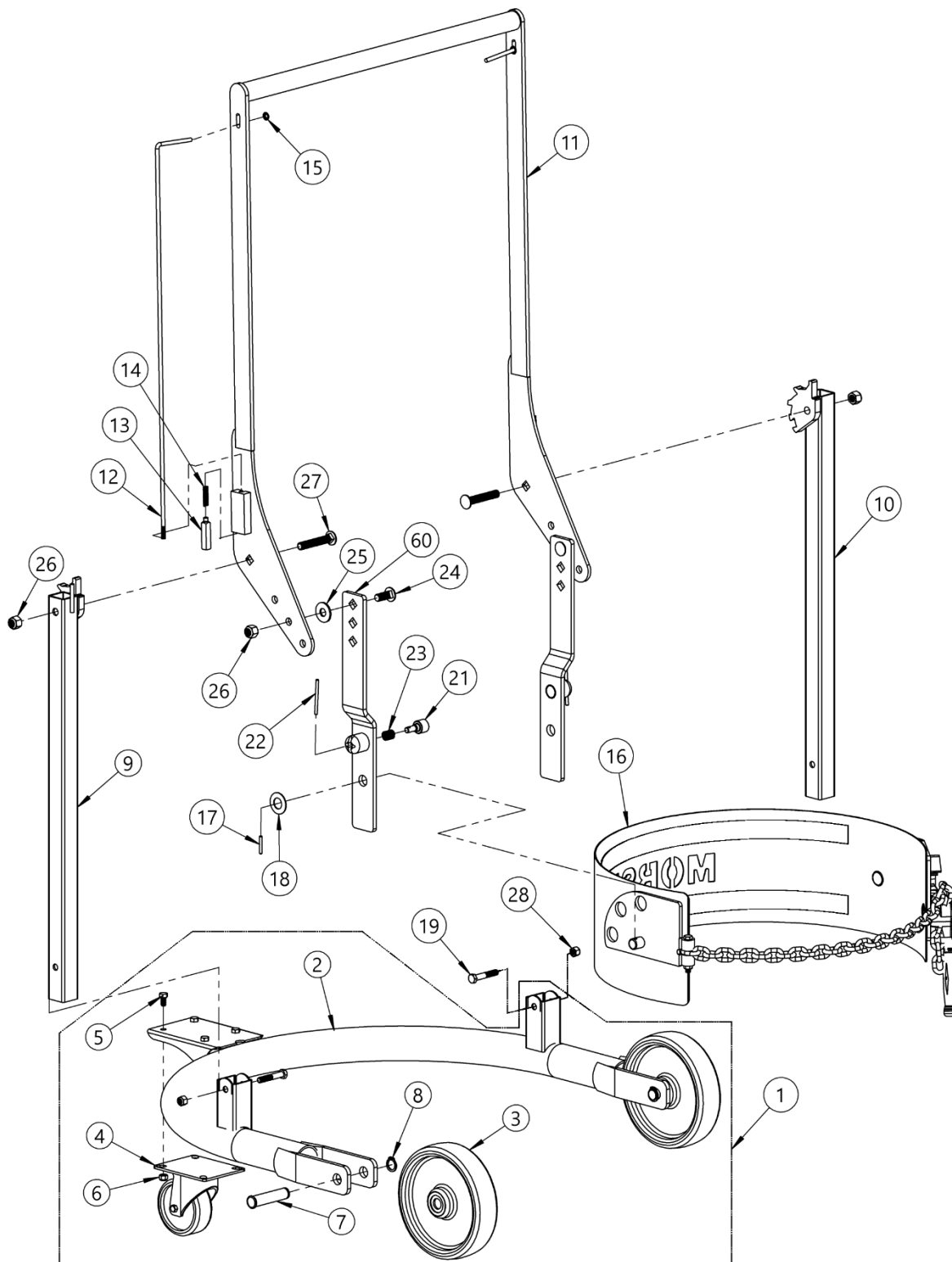


ITEM	PART NUMBER	QTY.	DESCRIPTION
50	80-P	1	STANCHION, W/ PIN, 80
51	82-P	2	HHCS, 3/8-16 X 2-1/4 GR2
52	1169-P	2	NUT, 3/8-16 REV HEX LOCK
53	800CPT-P	1	HANDLE ASM, 80
54	806-P	2	BOLT, 1/2-13 X 3 CARRIAGE
55	810-P	4	NUT, 1/2-13 REV HEX LOCK
56	6033-P	2	LINK ASM, 80, 82 SERIES
57	807-P	4	WASHER, 1/2 USS 1-3/8 OD
58	805-P	2	BOLT, 1/2-13 X 1-1/4 CARRIAGE
60	81-P	1	STANCHION W/O PIN, 80



ITEM	PART NUMBER	QTY.	DESCRIPTION
1	830CPT-P	1	BASE ASM, 80
2	830-P	1	BASE WELD, 80 SERIES
3	87-P	2	WHEEL, MORTUF, 8", 3/4" BRG
4	3308-P	1	CASTER, 4" SWIVEL, DBL RACE
5	215-P	4	HHCS, 5/16-18 X 5/8 GR2
6	3920-P	4	NUT, 5/16-18 NYLON LOCK
7	5329-P	2	PIN, GROOVE, 3/4 X 3.10 C
8	5330-P	2	SNAP RING, EXT, HD, .078, 3/4"
9	80-P	1	STANCHION, W/ PIN, 80
10	81-P	1	STANCHION W/O PIN, 80
11	800CPT-P	1	HANDLE ASM, 80
12	6920-P	2	RELEASE ROD, FOLLOWER 1/4-20
13	6919-P	2	FOLLOWER, RATCHET 1/4-20 80 81
14	70-P	2	SPRING, FOLLOWER, 80, 81
15	717-P	2	NUT, PUSH, 1/4"
16	101APS2-P	1	SADDLE ASM, 80APS
17	64-P	2	ROLL PIN, 3/16 X 1-1/4
18	62-P	2	WASHER, 3/4 SPRING
19	82-P	2	HHCS, 3/8-16 X 2-1/4 GR2
20	6033-P	2	LINK ASM, 80, 82 SERIES
21	59-P	1	PLUNGER, 80, 85
22	61-P	1	ROLL PIN, 3/16 X 2-1/2
23	60-P	1	SPRING, PLUNGER, 80, 85
24	805-P	2	BOLT, 1/2-13 X 1-1/4 CARRIAGE
25	807-P	2	WASHER, 1/2 USS 1-3/8 OD
26	810-P	4	NUT, 1/2-13 REV HEX LOCK
27	806-P	2	BOLT, 1/2-13 X 3 CARRIAGE
28	3981-P	2	NUT, 3/8-16 NYLON LOCK