

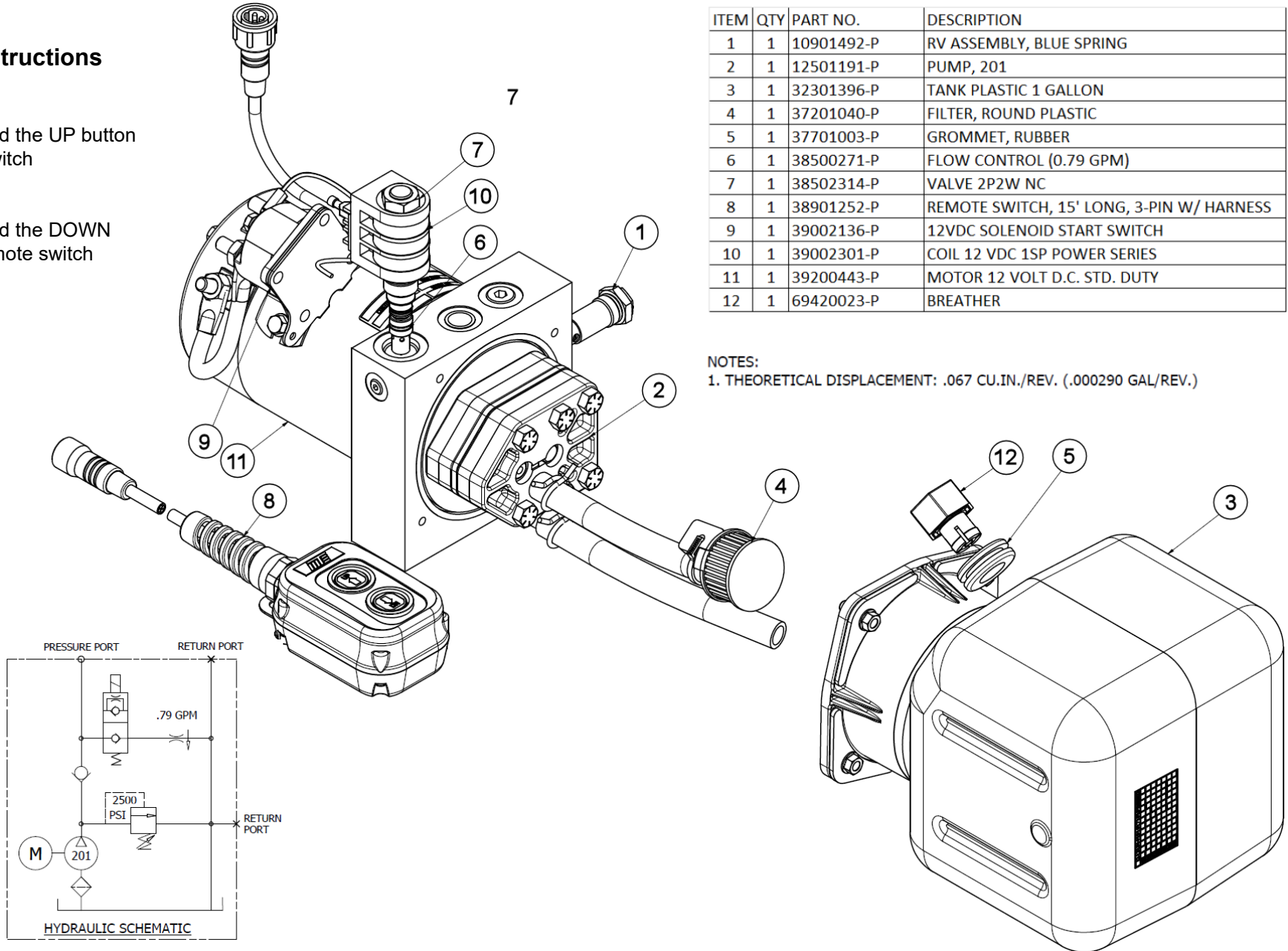
Operating Instructions

To Raise Drum

- Push and hold the UP button on remote switch

To Lower Drum

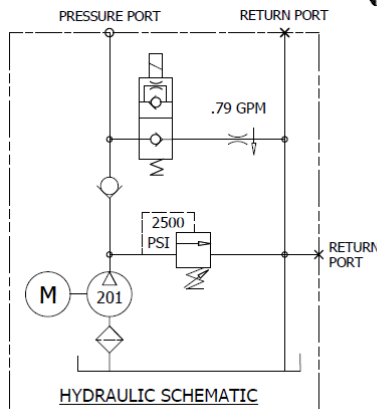
- Push and hold the DOWN button on remote switch



ITEM	QTY	PART NO.	DESCRIPTION
1	1	10901492-P	RV ASSEMBLY, BLUE SPRING
2	1	12501191-P	PUMP, 201
3	1	32301396-P	TANK PLASTIC 1 GALLON
4	1	37201040-P	FILTER, ROUND PLASTIC
5	1	37701003-P	GROMMET, RUBBER
6	1	38500271-P	FLOW CONTROL (0.79 GPM)
7	1	38502314-P	VALVE 2P2W NC
8	1	38901252-P	REMOTE SWITCH, 15' LONG, 3-PIN W/ HARNESS
9	1	39002136-P	12VDC SOLENOID START SWITCH
10	1	39002301-P	COIL 12 VDC 1SP POWER SERIES
11	1	39200443-P	MOTOR 12 VOLT D.C. STD. DUTY
12	1	69420023-P	BREATHER

NOTES:

1. THEORETICAL DISPLACEMENT: .067 CU.IN./REV. (.000290 GAL/REV.)



Maintenance info for Hydraulic Pump

Recommended oil is petroleum based Dexron III ATF or equivalent (non-synthetic).
Change oil yearly.

Recommended Operating Conditions:

- Oil Temperature Range: 10°F to 170°F (-25°C to 77°C)
- Operating Temperature: 50°F to 130°F (10°C to 54°C)

Oil Viscosity:

- Optimum 100 to 350 SUS (Cst = .22 X SUS – 135/SUS)
- Minimum 100 SUS at Operating
- Maximum Start Up 4000 SUS

Recommended Filtration:

- 10 micron nominal or better

Recommended Fluid for indoor use:

- Mobil DTE 24 or equal

Recommended Fluid for outdoor use:

- Mobil DTE 13 or equal

The system should not be disassembled in the field for maintenance. These are pass or fail components.

If the valve or pump fails it will need to be replaced due to wear on components.

The root cause for the failure needs to be taken into account to avoid contaminating the new components or to avoid exposing them to the same fail parameters.