



# SALINA VORTEX® CORPORATION

1725 Vortex Avenue Salina, Kansas 67401-8105  
Telephone (785) 825-7177 Fax (785) 825-7194

Home Page: [www.vortexvalves.com](http://www.vortexvalves.com) / e-mail: [vortex@vortexvalves.com](mailto:vortex@vortexvalves.com)

BASIC ASSEMBLY UNIT INSTALLATION DATA.

## INFINITE POSITION IRIS VALVE

**MODEL:** UB06IP-FP      **DESIGNED FOR GRAVITY FLOW.**  
**6 " NOMINAL BORE THRU VALVE.**

**CONNECTIONS:** (3) 9/32 DIAMETER THROUGH HOLES ON AN 8 1/2 D.B.C.  
(3) 1/4-20 TAPPED HOLES ON AN 8 1/2 D.B.C.

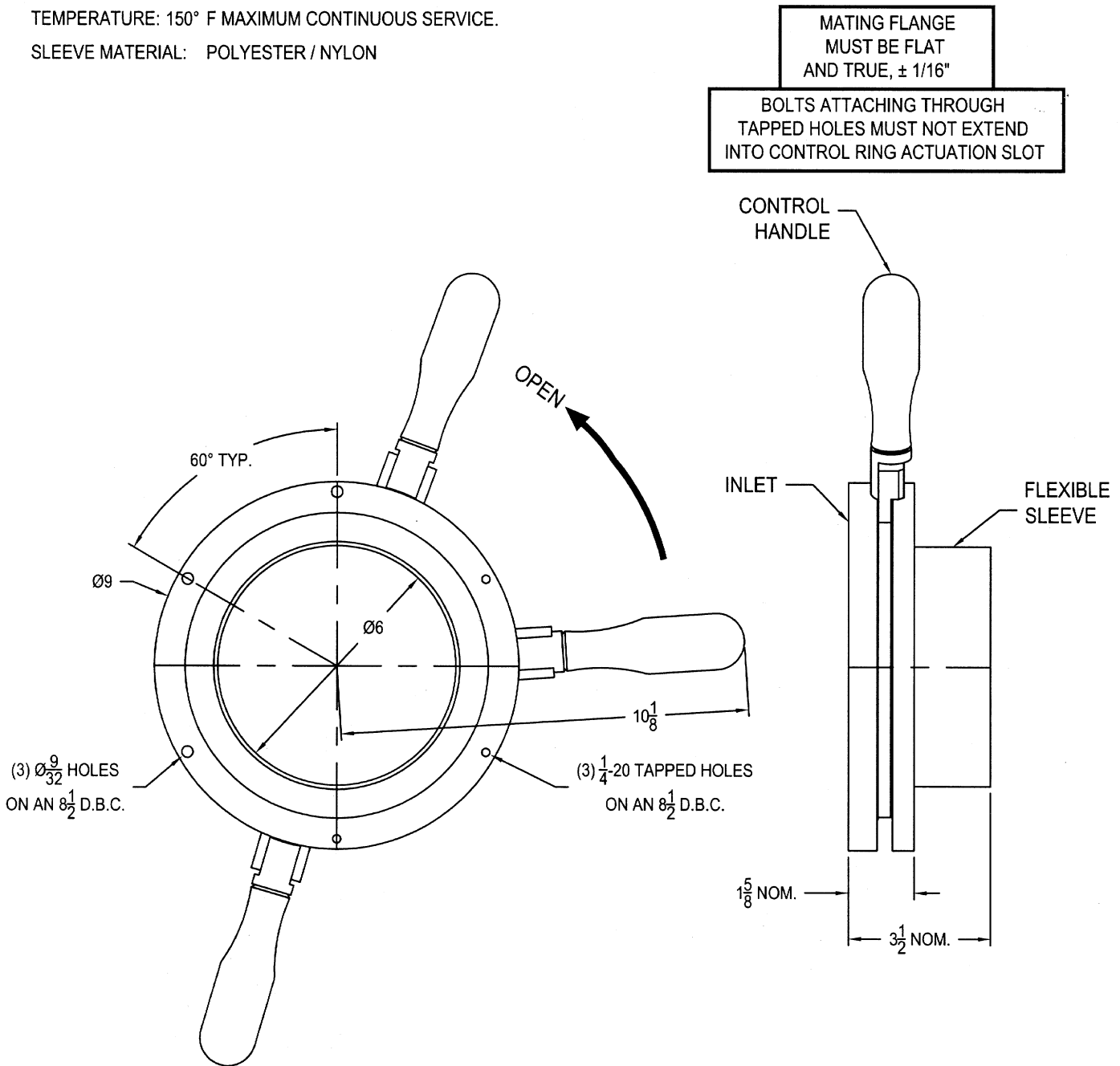
### MOUNTING: DO NOT SUPPORT LINES AND OTHER EQUIPMENT.

**ACTUATION:** HAND LEVER ACTUATED WITH INFINITE POSITIONS.

**APPROX. WEIGHT:** 6 LBS.

**TEMPERATURE:** 150° F MAXIMUM CONTINUOUS SERVICE.

**SLEEVE MATERIAL:** POLYESTER / NYLON





**SALINA VORTEX® CORPORATION**

1725 Vortex Avenue Salina, Kansas 67401-8105

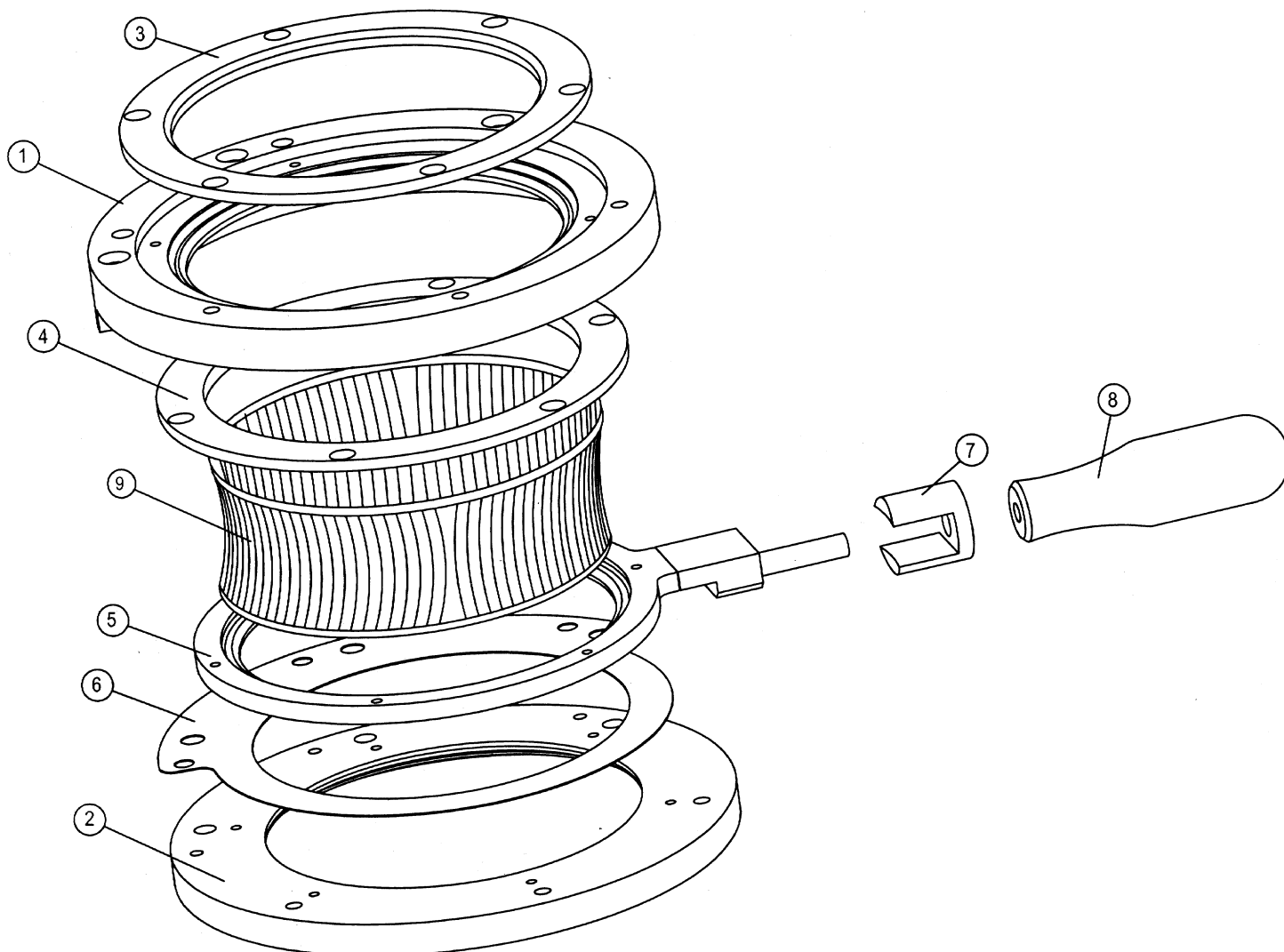
Telephone (785) 825-7177 Fax (785) 825-7194

Home Page: www.vortexvalves.com / e-mail: vortex@vortexvalves.com

MODEL: UB06IP-FP INFINITE POSITION IRIS VALVE

NO.	ITEM NO.	DESCRIPTION	QUANTITY	NO.	ITEM NO.	DESCRIPTION	QUANTITY
01	UB06-IP-FP-01	UPPER FLANGE	1	09	UB06-QL-09	SLEEVE	1 **
02	UB06-QL-FP-02	LOWER FLANGE	1	10	10	-	0
03	UB06-QL-03	INLET CLAMP RING	1	11	11	-	0
04	UB06-QL-04	CONTROL RING CLAMP	1 **	12	12	-	0
05	UB06-IP-05	CONTROL RING ASSEMBLY	1	13	13	-	0
06	UB06-QL-10	SHIM SPACER	1	14	14	-	0
07	UB00-IP-06	IP LOCKING WASHER	1 **	15	15	-	0
08	UB00-IP-08	IP HANDLE	1	16	16	-	0

\*\* INDICATES PARTS THAT MAY REQUIRE REPLACEMENT DUE TO WEAR OR INADVERTENT DAMAGE.





## **SALINA VORTEX® CORPORATION**

1725 Vortex Avenue Salina, Kansas 67401-8105

Telephone (785) 825-7177 Fax (785) 825-7194

Home Page: [www.vortexvalves.com](http://www.vortexvalves.com) / e-mail: [vortex@vortexvalves.com](mailto:vortex@vortexvalves.com)

# **Operation and Maintenance of Infinite Position (IP) Iris Valve**

## **OPERATION**

UB-IP and UB-IP2 Iris Flow Valves are operated by rotating the control ring and handle through a 180 degree arc to adjust the size of the valve opening from open to closed. The valve sleeve can be locked in any intermediate positions along the 180 degree arc for dribble flow purposes.

To move from an open to a closed position or intermediate position, simply spin the IP Handle (8) counter-clockwise 1-2 turns to relieve the grip of the IP Washer (7) from the Upper Flange (1). Next move the control ring with IP Handle Assembly (5,7,8) clockwise. Once the fully closed or desired intermediate position has been reached, spin the IP Handle (8) clockwise to clamp the IP Locking Washer (7) against the Upper Flange (1) thus locking the valve in position.

To move from a closed to an open or intermediate position, spin the IP Handle (8) counter-clockwise 1-2 turns to relieve the grip of the IP Washer (7) from the Upper Flange (1). Next move the control ring with IP Handle assembly (5, 7, 8) counter-clockwise. Once the fully open or desired intermediate position has been reached, spin the IP Handle (8) clockwise to clamp the IP Locking Washer (7) against the Upper Flange (1) thus locking the valve in position.

## **MAINTENANCE**

UB-IP and UB-IP2 Iris Flow Valves require minimal maintenance. Inspect the sleeve regularly for signs of excessive wear or stretching. If the sleeve is worn, replace the sleeve, following the sleeve replacement procedure below. Clean the components of the iris valve prior to installing a new sleeve. If the sleeve is loose, when fully closed, follow the sleeve adjustment procedures below.

Check the operation of the iris valve under load conditions to be sure that the flow is smooth and easy. If the iris valve binds and operation is difficult, correct the cause before serious damage occurs.

## **SLEEVE REPLACEMENT**

### **Removing the Sleeve**

Refer to the parts illustration diagram.

1. Remove the iris valve from its service installation and adjust the sleeve to the fully open position.
2. Remove the Inlet Clamp Ring (3).
3. Remove the screws in the Upper Flange (1). Depress the Sleeve Ring and Pull it through the Upper Flange (1).



## SALINA VORTEX® CORPORATION

1725 Vortex Avenue Salina, Kansas 67401-8105

Telephone (785) 825-7177 Fax (785) 825-7194

Home Page: [www.vortexvalves.com](http://www.vortexvalves.com) / e-mail: [vortex@vortexvalves.com](mailto:vortex@vortexvalves.com)

4. Remove the Clamp Ring (4) From the Control Ring Assembly (5). Compress the Sleeve Ring and pull it through the Clamp Ring (4).

### Installing the New Sleeve

1. Take the new Sleeve and set one end in the milled groove of Control Ring Assembly (5). Hold the Sleeve and gently pull on the middle of the Sleeve and get the entire excess sleeve out of the groove. Compress the Sleeve Ring on the other side of the sleeve and Pull through the Clamp Ring (4). Install the Clamp Ring (4).

2. Compress the Sleeve Ring opposite of the Control Ring Assembly (5) and Pull it through the Upper Flange with the ledge in the upper flange (1) facing down. Adjust the Sleeve to the fully open position.

3. Rotate the Control Ring Assembly to the fully open position. Next, position the Sleeve so that it is also fully open, then rotate the Sleeve counter-clockwise a 1/4 turn and place the Sleeve Ring in the Groove of the Upper Flange (1).

4. Hold the Sleeve and gently pull on the middle of the Sleeve and remove the entire excess sleeve out of the groove. Install the Inlet Clamp Ring (3).

5. Line up the holes on the Upper Flange (1), the Spacer Ship (6) and the Lower Flange (2). Install the Screws through the Upper Flange (1).

Before replacing the flow valve in its operating location, check the valve while it is closed to be sure that it closes tightly. Force should not be required to close the valve. If adjustments are necessary, refer to the sleeve adjustment instructions below.

### SLEEVE ADJUSTMENT

1. If the valve opening does not close tightly, loosen the Inlet Clamp ring screws (3) and twist the sleeve as required to adjust.

**CAUTION: To tighten the sleeve of an Iris valve, the sleeve must be twisted in a counterclockwise direction (to the left). Rotate in a clockwise direction (to the right) to loosen the Sleeve.**

**NOTE:** Do not twist the sleeve too tightly. The sleeve should only be tight enough to close completely.

2. Hold the Sleeve ring while pulling gently on the middle of the Sleeve and get the entire excess sleeve out of the groove. Tighten the Inlet Clamp Ring (3).

3. Test the actuation and reapply steps for undesirable results.